



Veritas®

Product overview - Cereals

Veritas® is a broad spectrum foliar fungicide for use in wheat and barley. Application of Veritas prior to disease infection can significantly reduce the establishment of a wide range of foliar diseases.

- Contains Azoxystrobin 120 g/L + Tebuconazole 200 g/L in a Suspension Concentrate (SC) formulation
- Two modes of action for improved disease control, broader spectrum and resistance management
- Excellent protectant and systemic activity
- Maximises the potential of high yielding cereal crops
- Veritas is registered for use in Wheat, Barley, Canola, Peanuts and Winter Pulses (Chickpeas, Lentils, Faba Beans, Broad Beans, Field Peas, Lupins and Vetch).

Mode of action

GROUP 3|11 FUNGICIDE

The combination of two modes of action in Veritas provides protection against several stages in the life cycle of fungi.

Strobilurin component:

- Inhibits spore germination and host penetration during the early stages of fungal vegetative growth
- Extended residual activity on spore germination.

DMI component:

- Rapidly absorbed into leaves and transported acropetally to provide uniform protection throughout the leaf
- Active on the vegetative mycelia of the fungi with limited direct activity on spores.

The dual combination of a strobilurin + DMI ensures infections are targeted from the time of spore germination on the leaf surface through to mycelial development within leaves. Therefore, growers applying Veritas as a preventative treatment prior to spore germination will achieve the maximum benefit from both the strobilurin and DMI components.

Features and benefits

- Mixture of highly active strobilurin and triazole active ingredients
- Systemic and residual disease control
- Higher triazole loading than alternative fungicides
- Broad spectrum disease control
- Compatible with a wide range of crop protection products
- Excellent value for money
- Highly effective disease control and fungicide resistance management
- Strong protection of yield-determining leaves
- Ideal for Australian conditions with proven efficacy
- Confidence a wide range of foliar diseases will be controlled
- Convenient single pass application to minimise machinery and labour costs, while providing good crop safety
- Strong return on investment by protecting cereal crops and improving yields.



Standard recommendations

Veritas should be applied at 315 to 630 mL/ha when conditions favour disease but before high levels of infection have developed within the crop. The optimum timing may vary depending on the crop type, growth stage, disease type and weather conditions but should aim to prevent diseases from developing and avoid curative application. The most cost-effective time for application is typically between stem elongation and full head emergence (GS 30-59).

- Wheat diseases controlled – Stripe Rust, Stem Rust, Yellow Leaf Spot, Septoria Nodorum Blotch (Glume Blotch) and Septoria Tritici Blotch
- Barley diseases controlled – Leaf Rust, Leaf Scald, Powdery Mildew and Net Blotch (suppression only).

DO NOT apply more than two sprays per growing season.

Applying Veritas

Veritas can be applied by ground-rig or by aerial application.

- Veritas is rainfast within 2 hours when applied under good weather conditions
- There is no need to use surfactants or wetters when applying Veritas.

Ground-rig application:

- Apply in a medium or coarse spray quality in 50-100 L water/ha.

Aerial application:

- Apply a minimum of 10 L water/ha although 20-30 L water/ha is recommended for optimum coverage.

Withholding periods

- DO NOT harvest cereal crops treated with Veritas for 6 weeks
- DO NOT graze or cut cereal crops treated with Veritas for 21 days
- DO NOT slaughter animals destined for export within 7 days of consumption of treated cereal forage or straw.



Stripe Rust in Wheat.



Net Form of Net Blotch in Barley.

Applying Veritas preventively will protect against visible disease symptoms and loss of valuable leaf area. Figure 1 below shows the excellent performance offered by Veritas against Stripe Rust.

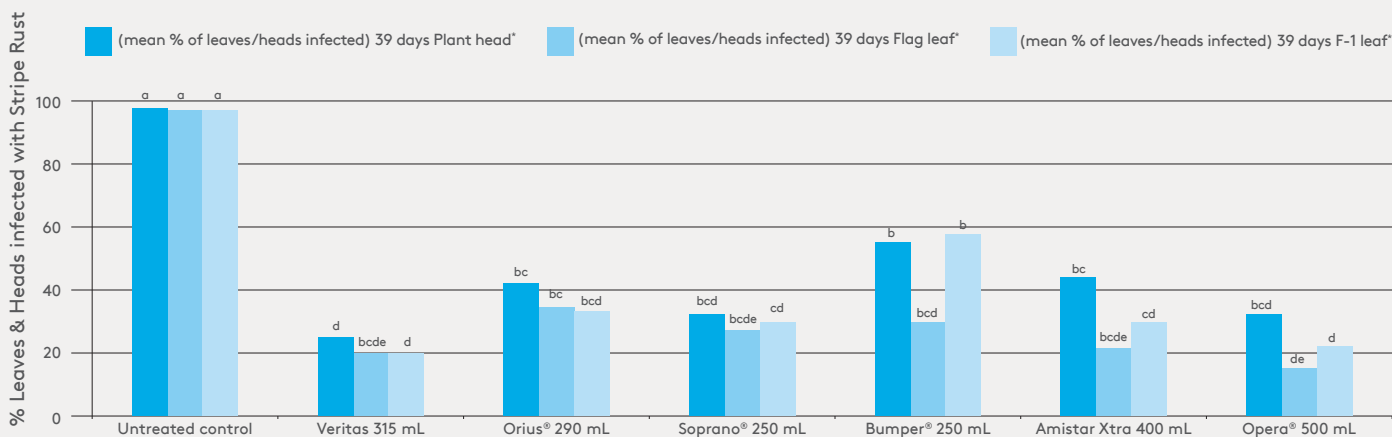


Figure 1. Stripe Rust incidence in wheat cv. H45 at 39DAA, Arthurton, South Australia, 2011



Hong Kong | Singapore | Malaysia | Australia
 Email: info@centaur-asiapacific.com
 Website: www.centaur-asiapacific.com



ADAMA

Simply. Grow. Together.

Visit ADAMA.com

Phone 1800 4 ADAMA

Follow us  