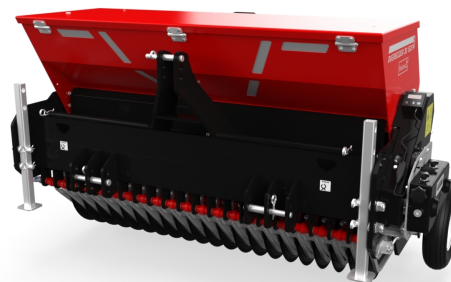


## Overseeder 3D 1575 LV

The Overseeder 3D 1575 LV features an all-new seed delivery mechanism with single-point adjustment. The tough discs cut grooves in the soil for seed to be accurately placed before the roller closes the groove to cover the seed. This lighter weight seeder is suitable for smaller tractors.



### Specifications

SKU	122.157.503
Working width (m)	1.58
Working width (inch)	62.2
Max. Working depth (mm)	20
Max. Working speed (km h)	12
Max. Working speed (mph)	7.5
Weight (kg)	832
Weight (lbs)	1834
Sowing distance (mm)	75
Sowing distance (inch)	2.9
Hopper capacity (L)	276
Hopper capacity (cu.ft.)	9.7
Number of seeding elements	21
Min. Tractor HP required	40
Min. Lifting capacity 610 mm behind the lifting eyes (kg)	832
Min. Lifting capacity 24 inch behind the lifting eyes (lbs)	1834
Max. capacity ( m <sup>2</sup> hr)	18.900
Max. capacity (ft <sup>2</sup> hr)	203.438
Three-point hitch	3-point CAT 1-2
Lubricant	EP2

### Distributed by:



[www.centaur-asiapacific.com](http://www.centaur-asiapacific.com)  
[info@centaur-asiapacific.com](mailto:info@centaur-asiapacific.com)

\*Hong Kong, Macau, Malaysia (Johor).