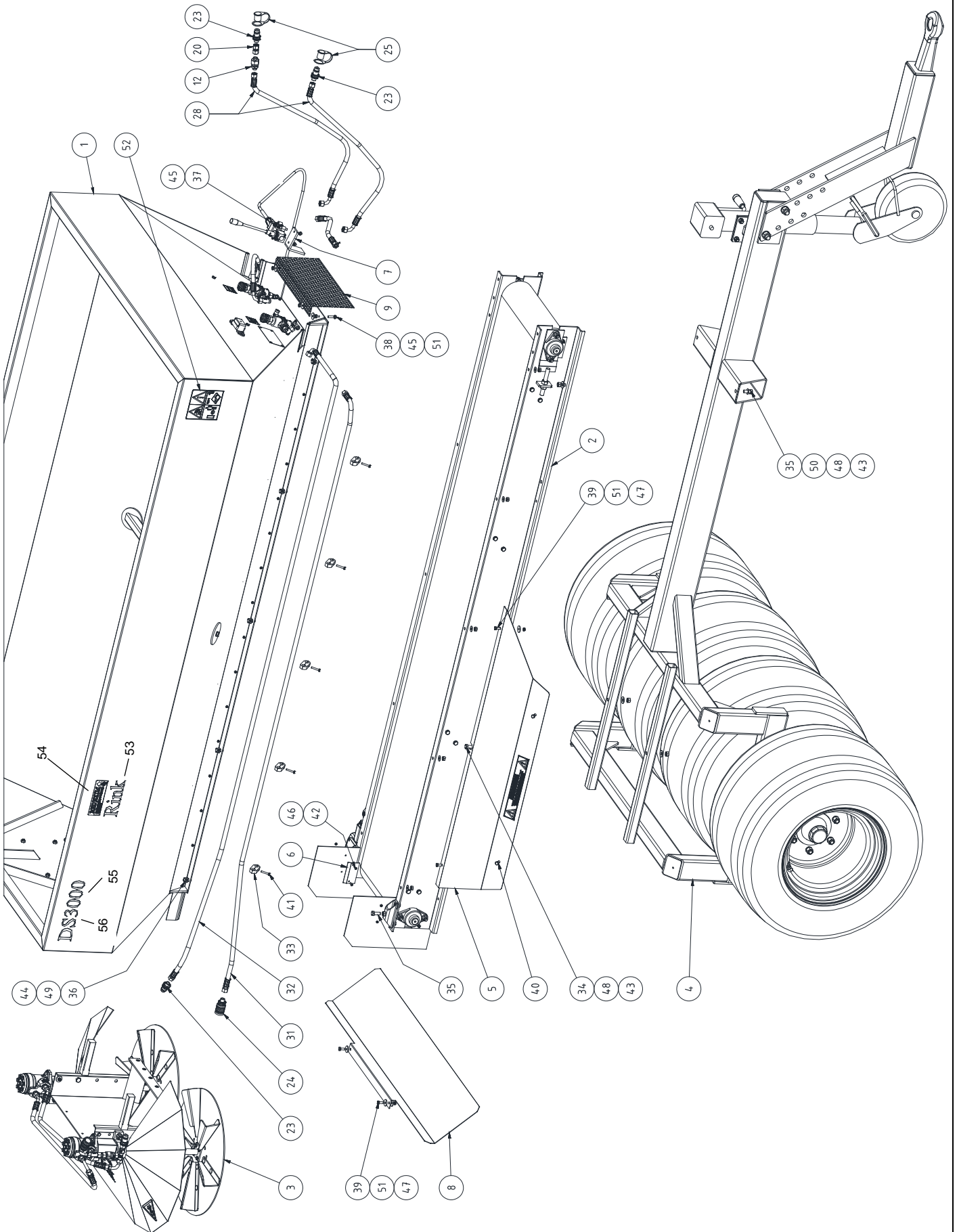
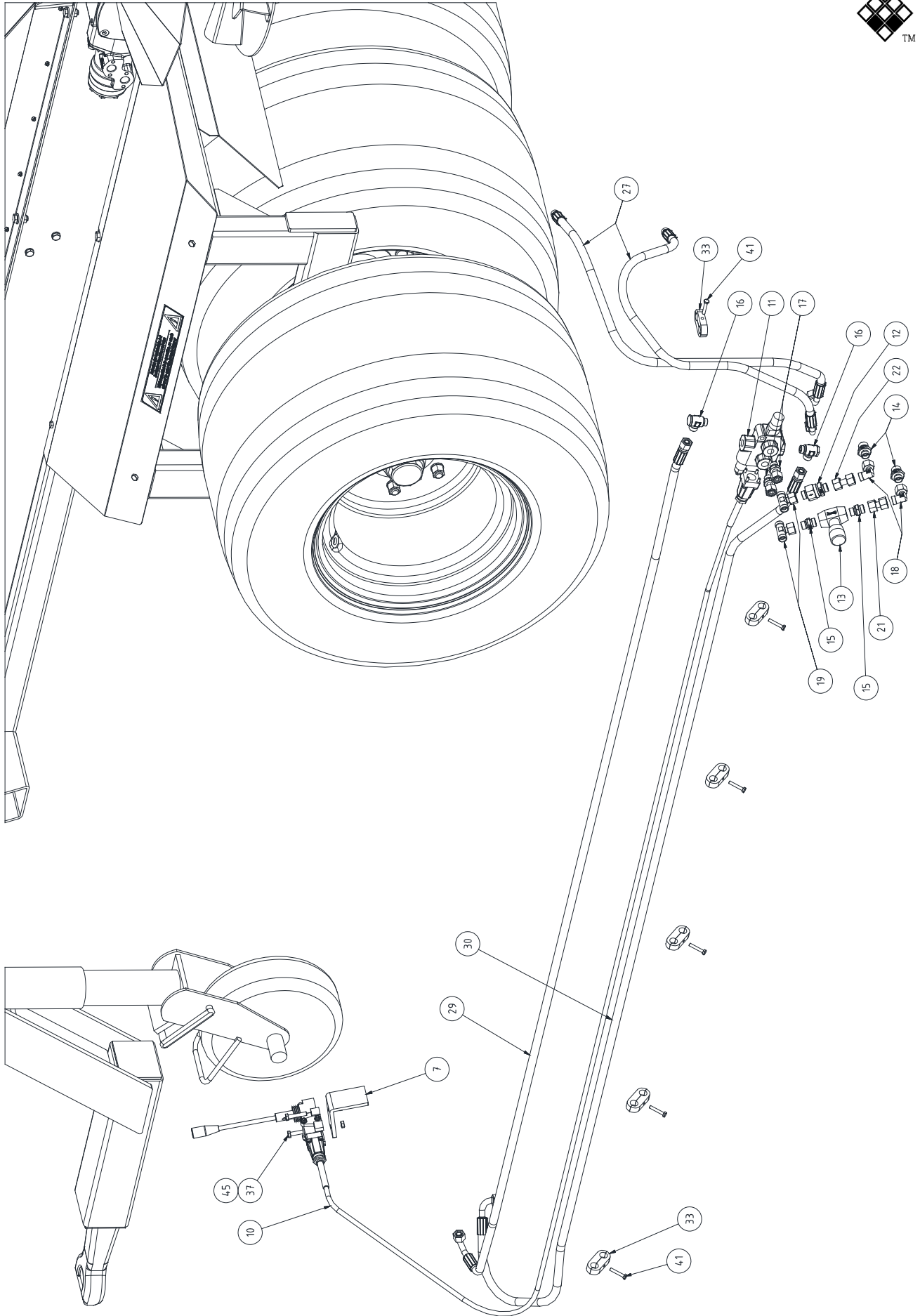


# Parts manual

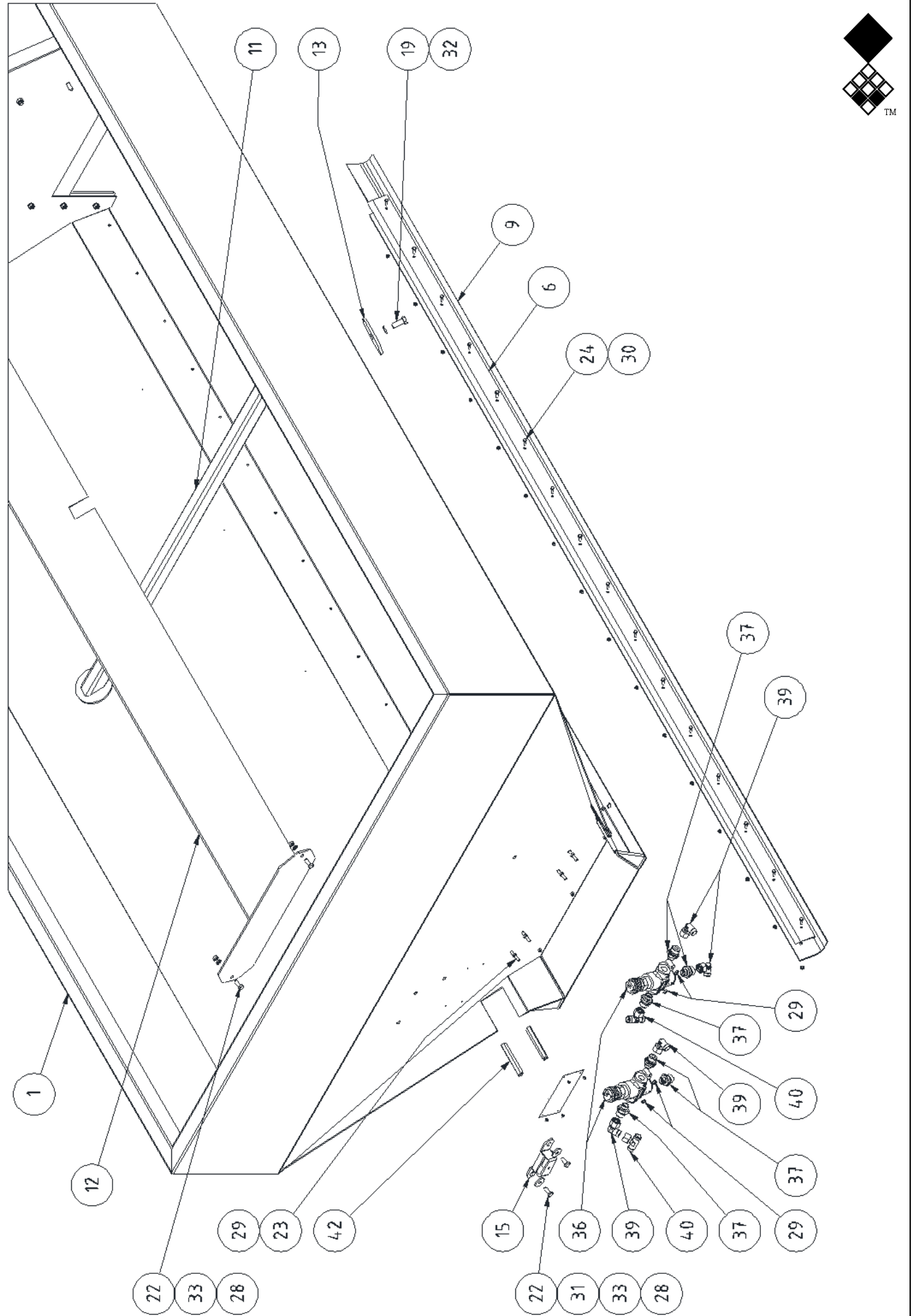




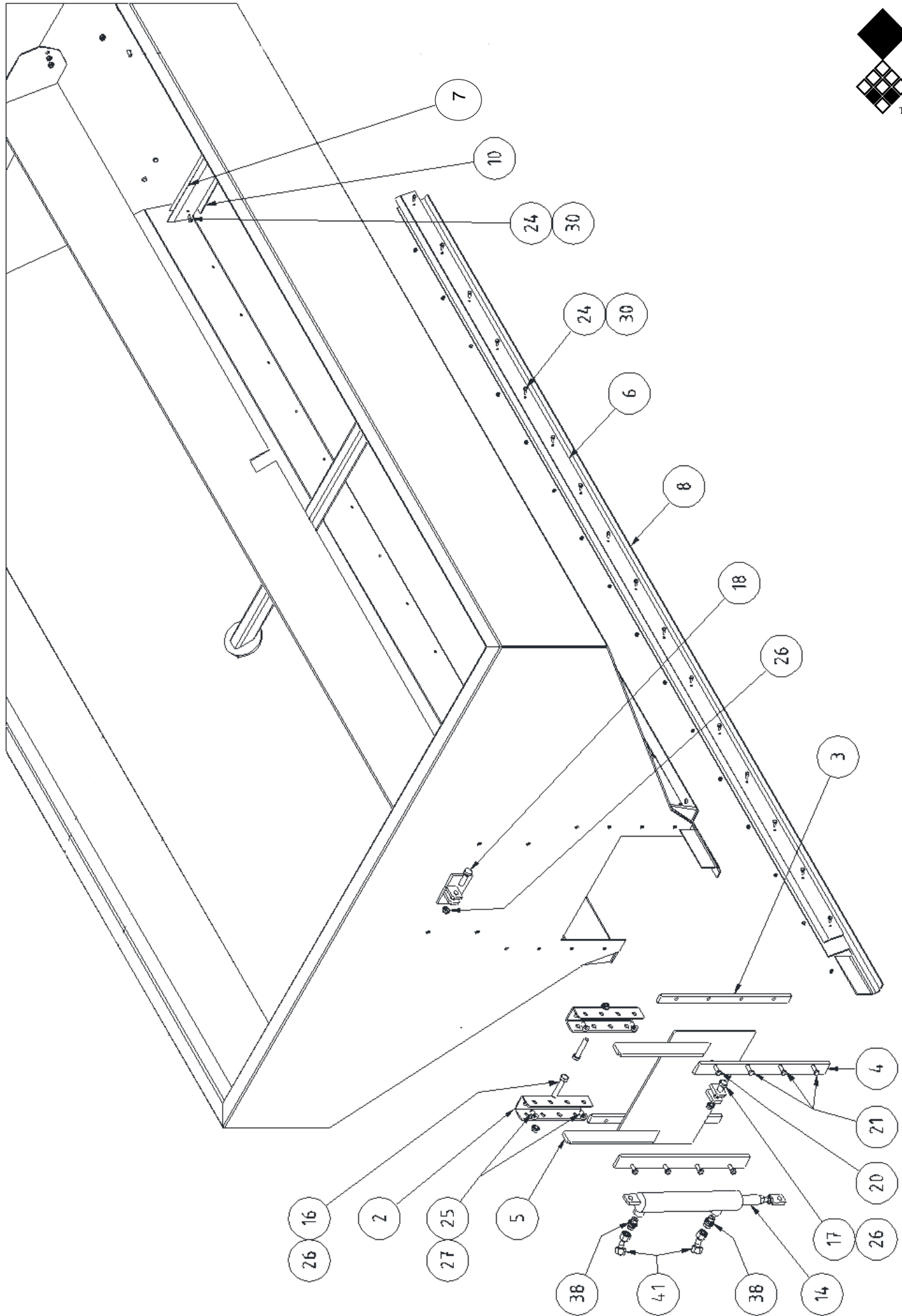
	PART NO.	DESCRIPTION	REMARKS	QUA
1		Hopper	See page 3/4	1
2		Conveyor belt	See page 5	1
3		Disc spinners	See page 6	1
4		Wheel frame	See page 7	1
5	RGS 17055	Fender		2
6	RGS 16384	Side seal short		2
8	RGS 16312	Spreading plate		1
9	RGS 16377	Front cover		1
12	RGS 10341	One way valve		1
20	RGS 10040	Straight nipple pre-mounted		1
23	RGS 10747	Hydraulic connector male		3
24	RGS 10744	Hydraulic connector female		1
25	RGS 19005	Hydraulic connector cover		2
26	RGS 10659	Hydraulic hose 10x400		1
28	RGS 10741	Hydraulic hose 10x2450		2
31	RGS 10867	Hydraulic hose 10x3200		1
32	RGS 10866	Hydraulic hose 10x3400		1
33	RGS 10745	Hydraulic clamp		5
34	802.120.600	Bolt M12x60		2
35	804.120.300	Bolt M12x30		4
36	804.100.250	Bolt M10x25		10
38	804.080.300	Bolt M8x30		2
39	804.080.200	Bolt M8x20		6
40	804.080.120	Bolt M8x12		4
41	804.060.350	Bolt M6x35		5
42	804.050.160	Bolt M5x16		4
43	830.120.120	Self lock nut M12		4
44	830.100.100	Self lock nut M10		10
45	830.080.080	Self lock nut M8		4
46	830.050.050	Self lock nut M5		4
47	830.080.085	Self lock nut M8 with washer		6
48	864.120.030	Washer M12		4
49	864.100.030	Washer M10		20
50	864.120.030	Washer M12		2
51	864.080.040	Washer M8x40		12
52	933.280.402	Safety decall Rink		2
53	933.260.402	Decall Rink		2
54	900.260.403	Decall Redexim logo		2
55	933.260.418	Decall Rink DS		2
56	924.260.420	Label 3000		2



	PART NO.	DESCRIPTION	REMARKS	QUA
7	RGS 16378	Bracket		1
10	RGS 10868	Cable complete		1
11	RGS 10669	Valve		1
12	RGS 10341	One way valve		1
13	RGS 10374	Flow reducer		1
14	RGS 10662	Nipple		2
15	RGS 10660	Hydraulic fitting		2
16	RGS 10755	Nipple		2
17	543.170.120	Nipple 3/8"x 12mm		2
18	544.180.400	L-type connector		2
19	544.124.126	T-connector		2
21	RGS 11169	Straight connector 40 mm		1
22	RGS 11170	Straight connector 46 mm		1
27	RGS 10666	Hydraulic hose 10x1200		2
29	RGS 10864	Hydraulic hose 10x2900		1
30	RGS 10865	Hydraulic hose 10x2950		1
33	RGS 10745	Hydraulic clamp		6
37	804.080.400	Bolt M8x40		2
41	804.060.350	Bolt M6x35		6
45	830.080.080	Self lock nut M8		2

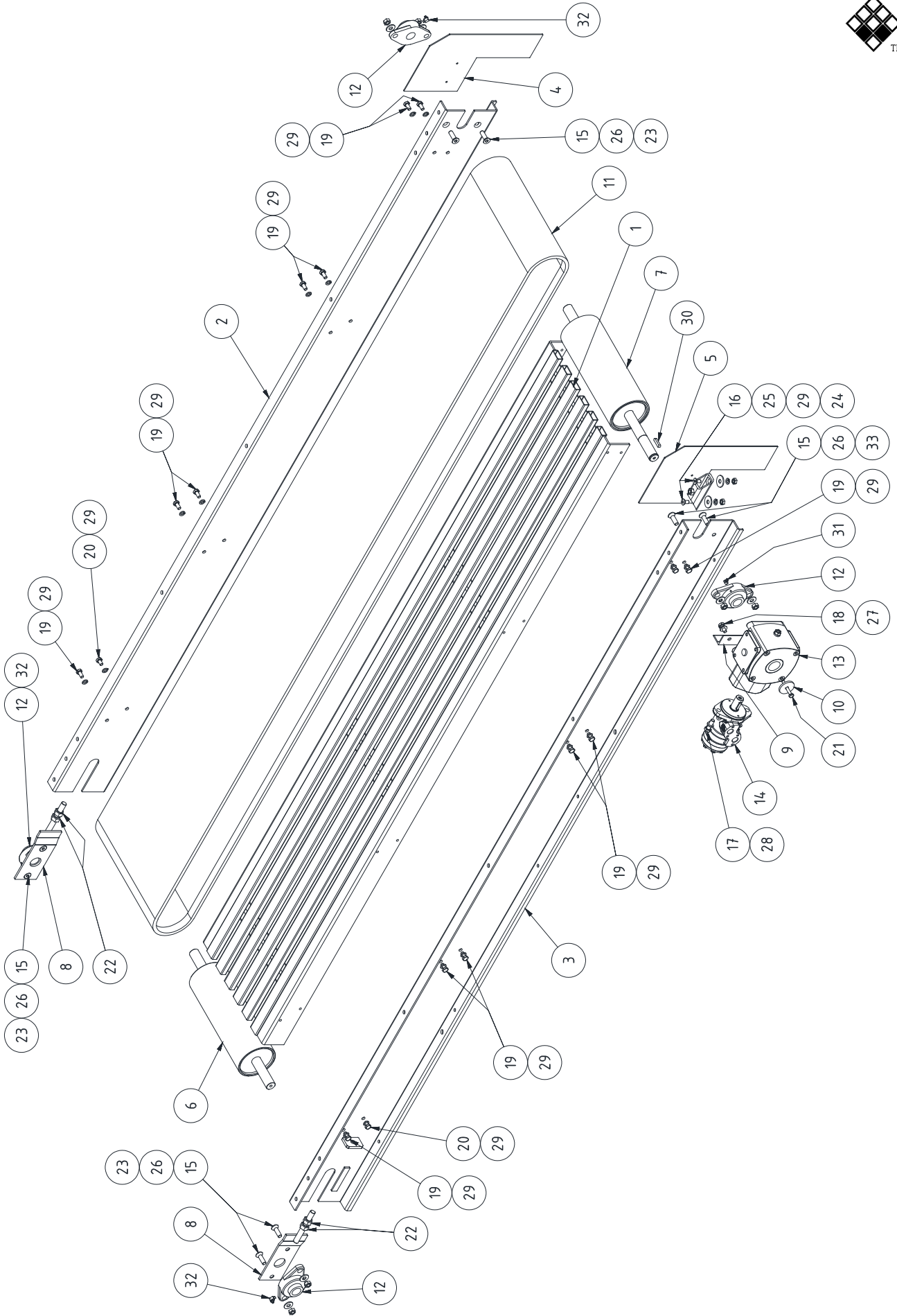


	PART NO.	DESCRIPTION	REMARKS	QUA
1	RGS 17068	Hopper DS3000		1
6	RGS 17066	Clamp strip side		1
9	RGS 10863	Rubber strip right		1
11	RGS 17065	Support bar		1
12	RGS 17067	Sand pressure relieve plate		1
13	RGS 16731	Flange plate		2
15	RGS 11023	Bracket		1
19	804.120.300	Bolt M12x30		2
22	804.080.200	Bolt M8x20		6
23	804.060.350	Bolt M6x35		4
24	804.050.160	Bolt M5x16		16
28	830.080.080	Self lock nut M8		8
29	830.060.060	Self lock nut M6		8
30	830.050.050	Self lock nut M5		16
31	864.080.040	Washer M8x40		2
32	866.120.020	Spring washer M12		2
33	866.080.020	Spring washer M8		6
36	RGS 10336	Regulator 25L		2
37	RGS 10028	Nipple m22x1.5 x 12mm tube light		6
39	544.180.400	L-type connector		4
40	544.124.126	T-Connector		2
42	RGS 10268	Protection rubber		4

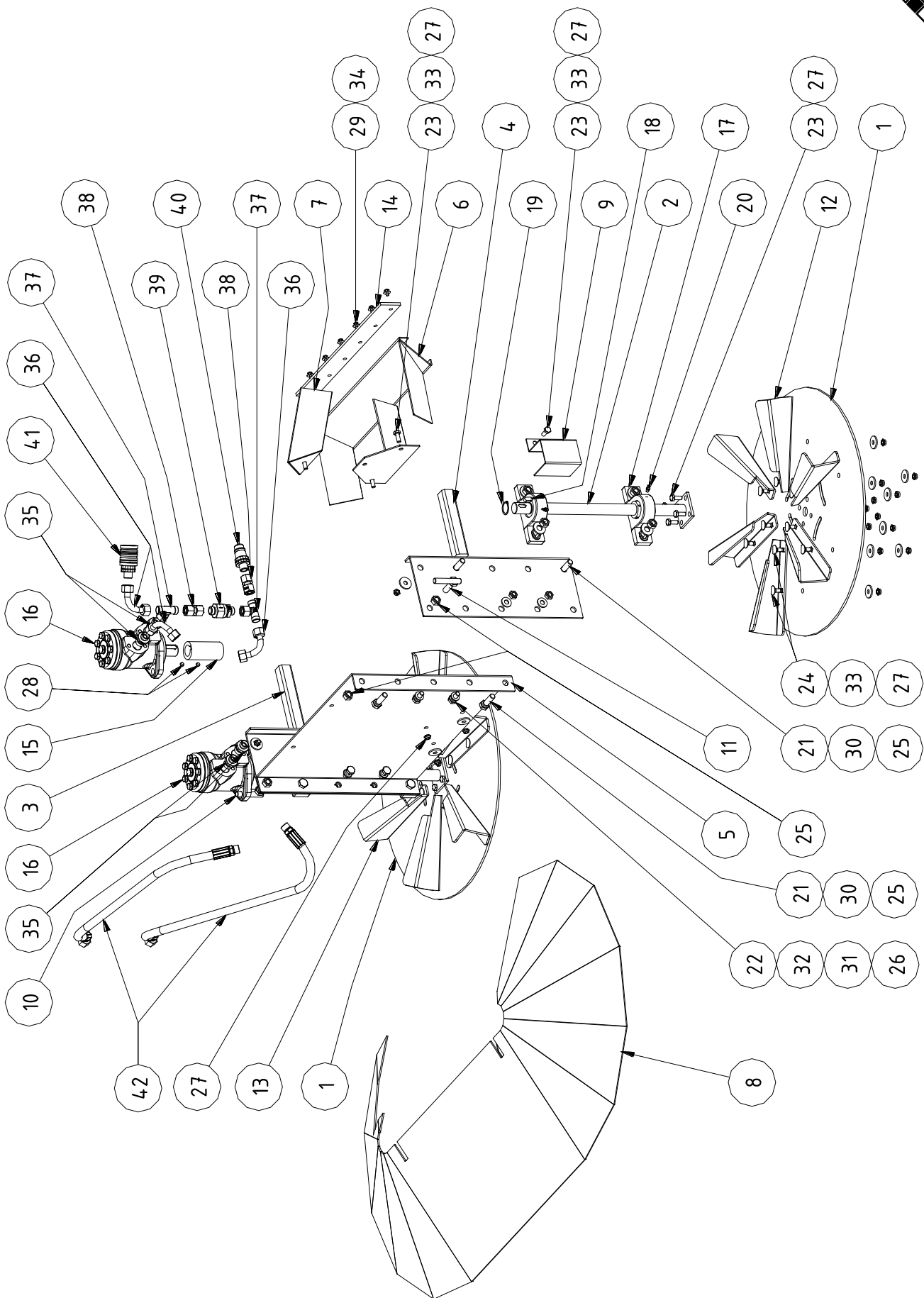




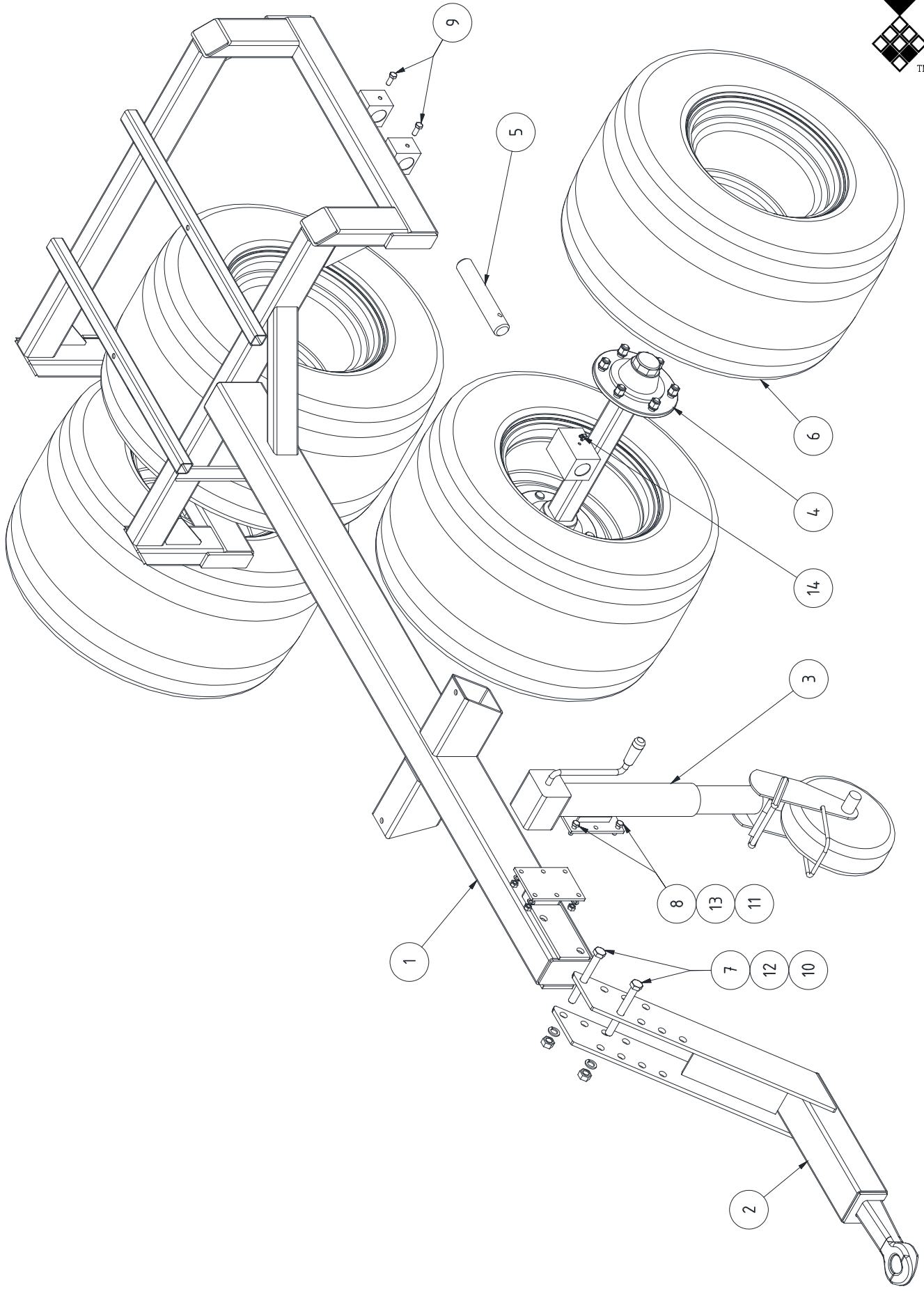
	PART NO.	DESCRIPTION	REMARKS	QUA
2	RGS 16360	Gate adjuster bracket		2
3	RGS 16359	Gate distance plate		2
4	RGS 16358	Gate guide plate		2
5	RGS 16409	Gate		1
6	RGS 17066	Clamp strip side		1
7	RGS 16375	Clamp strip front		1
8	RGS 10863	Rubber strip left		1
10	RGS 10738	Rubber strip front		1
14	RGS 16457	Hydraulic cylinder		1
16	802.120.600	Bolt M12x60		2
17	804.120.450	Bolt M12x45		1
18	804.120.400	Bolt M12x40		1
20	804.080.400	Bolt M8x40		2
21	804.080.300	Bolt M8x30		6
24	804.050.160	Bolt M5x16		18
25	814.100.201	Conical bolt M10x20		4
26	830.120.120	Self lock nut M12		4
27	830.100.100	Self lock nut M10		4
30	830.050.050	Self lock nut M5		18
38	RGS 10660	Hydraulic fitting		2
41	RGS 11171	Connector 60 mm		2



	PART NO.	DESCRIPTION	REMARKS	QUA
1	RGS 17031	Conveyor belt frame		1
2	RGS 17028-R	Belt cover right		1
3	RGS 17028-L	Belt cover left		1
4	RGS 16331-R	Spinner bracket right		1
5	RGS 16331-L	Spinner bracket left		1
6	RGS 16326	Belt roller front		1
7	RGS 16325	Belt roller rear		1
8	RGS 16112	Tensioner bracket		2
9	RGS 16249	Torque support		1
10	RGS 15385	Thick washer		1
11	RGS 10860	Conveyor belt		1
12	742.300.480	Bearing UELFL 206		4
13	RGS 10511	Gearbox		1
14	RGS 10523	Hydraulic motor OMP200		1
15	816.120.400	Conical bolt M12x40		8
16	816.100.200	Conical bolt M10x20		4
17	804.120.350	Bolt M12x35		2
18	804.100.250	Bolt M10x25		2
19	804.100.200	Bolt M10x20		14
20	804.100.160	Bolt M10x16		2
21	802.080.600	Bolt M8x60		1
22	826.160.160	Nut M16		4
23	830.120.120	Self lock nut M12		6
24	826.100.100	Nut M10		4
25	864.100.031	Large washer M10		4
26	864.120.030	Washer M12		8
27	864.100.030	Washer M10		2
28	866.120.020	Spring washer M12		2
29	866.100.020	Spring washer M10		20
30	884.080.352	Key 8x7x35		1
31	880.060.104	Grease nipple M6 45 deg.		1
32	880.060.102	Grease nipple M6 90 deg		3
33	864.120.030	Washer M12		4



	PART NO.	DESCRIPTION	REMARKS	QUA
1	RGS 16301	Disc		2
2	RGS 16329	Shaft		2
3	RGS 16337 left	Spinner shaft holder left		1
4	RGS 16337 right	Spinner shaft holder right		1
5	RGS 16305	Rear plate		1
6	RGS 16352	Sand guide plate		1
7	RGS 16403	Guide		1
8	RGS 16404	Cover		1
9	RGS 16381	Disc shaft cover		2
10	RGS 16379-R	Motor torque bolt right		1
11	RGS 16379-L	Motor torque bolt left		1
12	RGS 16353 right	Vane right		6
13	RGS 16353 left	Vane left		6
14	RGS 10796	Rubber strip		1
15	RGS 15137	Connecting sleeve 80mm		2
16	RGS 10140	Hydraulic motor OMP 50		2
17	RGS 10133	Bearing UCP 205 D1		4
18	884.080.200	Key 8x7x20		2
19	870.025.120	Circlip d=25		2
20	880.060.100	Grease nipple		4
21	804.120.400	Bolt M12x40		8
22	804.100.250	Bolt M10x25		4
23	804.080.200	Bolt M8x20		12
24	820.080.200	Mushroom head bolt M8x20		24
25	826.120.120	Nut M12		12
26	826.100.100	Nut M10		4
27	830.080.085	Self lock nut M8 with washer		37
28	818.080.080	Set screw M8x8		4
29	886.050.160	Blind rivet 5x16		6
30	864.120.030	Washer M12		8
31	864.100.030	Washer M10		4
32	866.100.020	Spring washer M10		4
33	830.080.031	Large washer M8		28
34	864.050.031	Washer M5		6
35	RGS 10662	Nipple		4
36	RGS 11172	connector 60 mm		3
37	544.124.126	T-connector		2
38	RGS 10040	Straight nipple pre-mounted		2
39	RGS 10341	One way valve		1
40	RGS 10747	Straight connector male		1
41	RGS 10744	Straight connector female		1
42	RGS 10671	Hydraulic hose 10x750		2



	PART NO.	DESCRIPTION	REMARKS	QUA
1	RGS 17079	Wheel frame		1
2	RGS 17078	Tow bar		1
3	RGS 17088	Support tire		1
4	RGS 17081	Axle		2
5	RGS 17082	Shaft		2
6	RGS 10066	Wheel 19.0-45/17-10		4
7	802.201.800	Bolt M20x180		2
8	804.120.350	Bolt M12x35		4
9	804.120.300	Bolt M12x30		4
10	826.200.200	Nut M20		2
11	826.120.120	Nut M12		4
12	866.200.020	Spring washer M20		2
13	866.120.020	Spring washer M12		4
14	880.080.102	Grease nipple 90 deg.		2