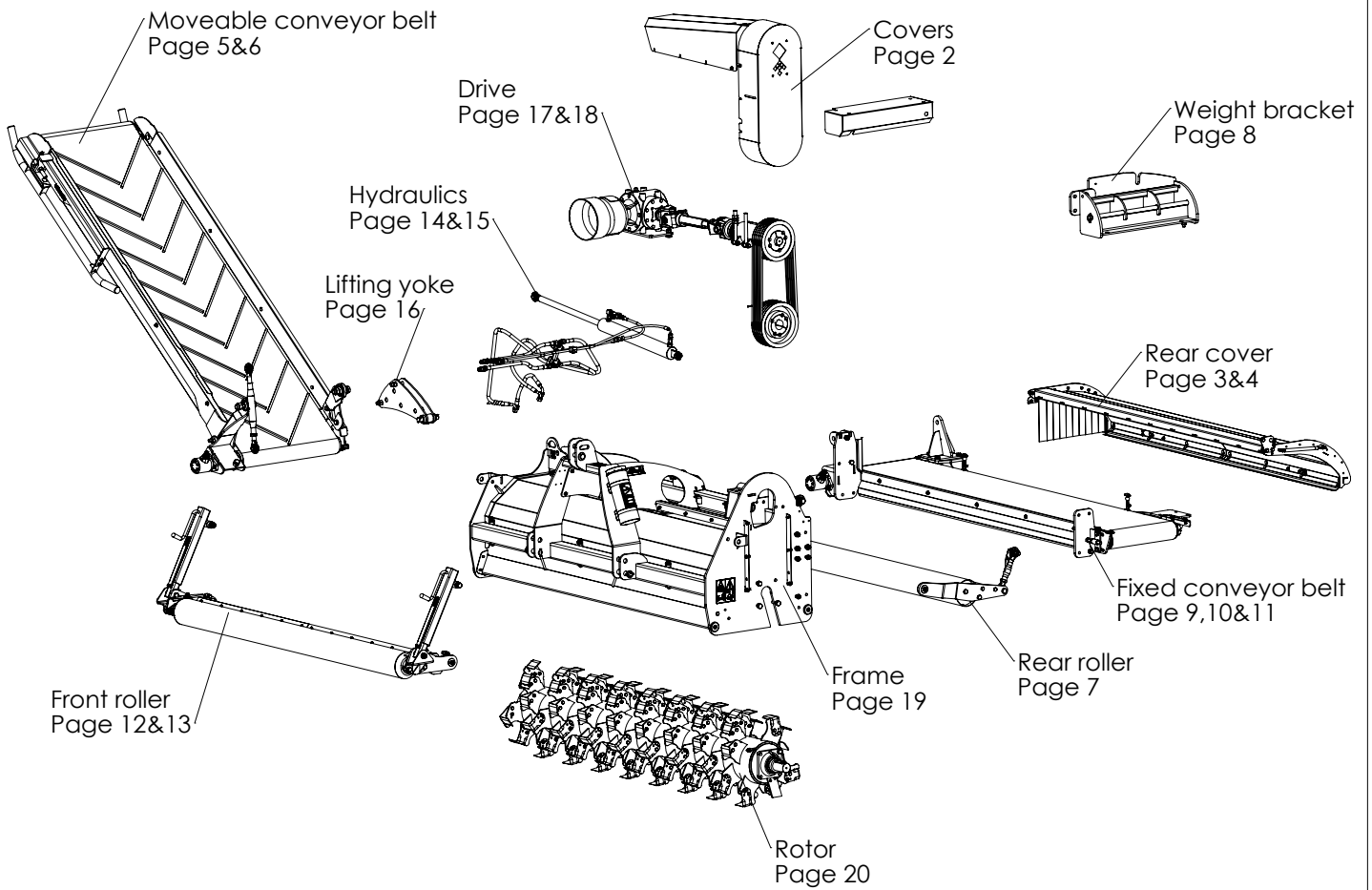


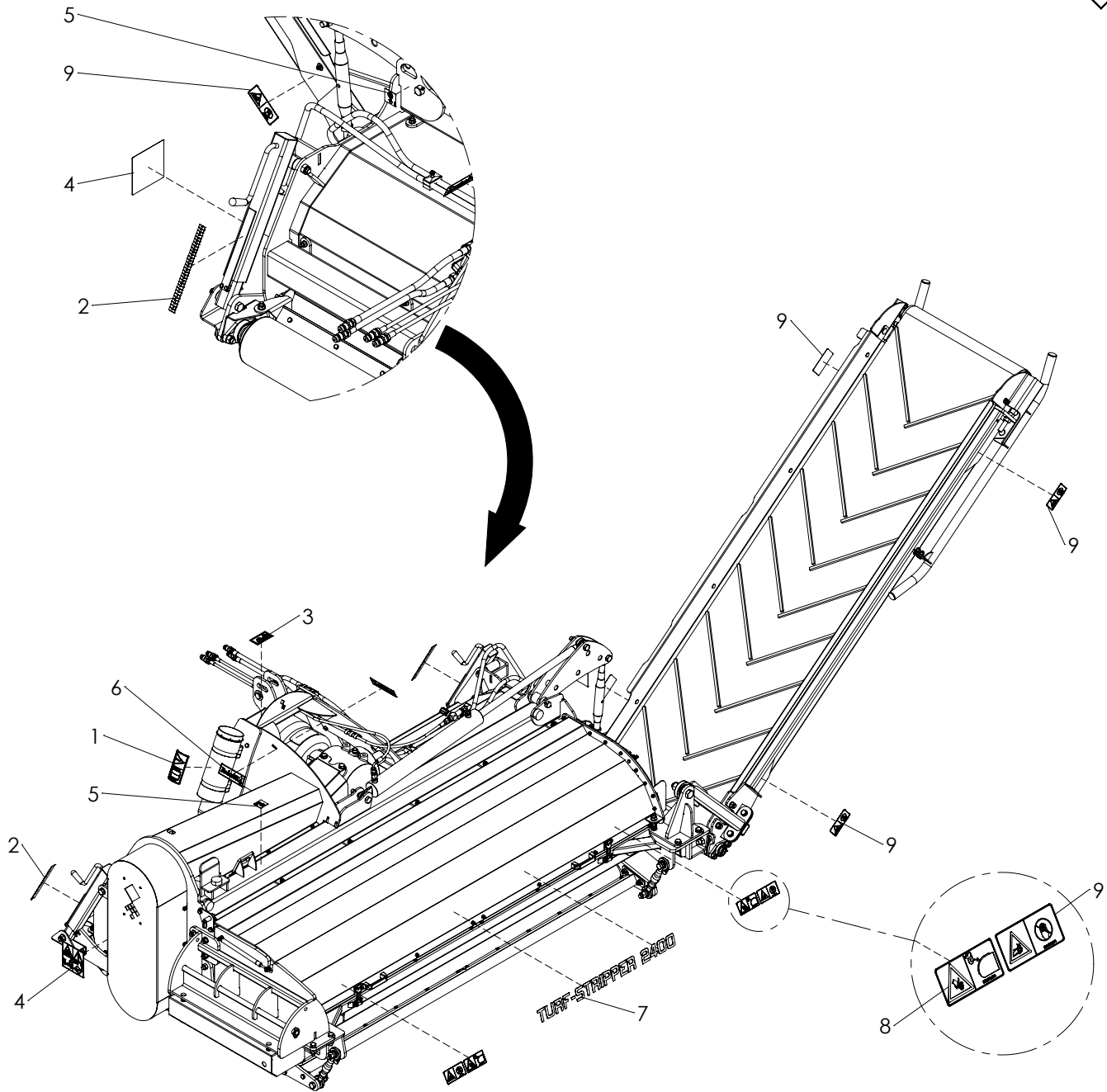
# ***TURF-STRIPPER 2400***



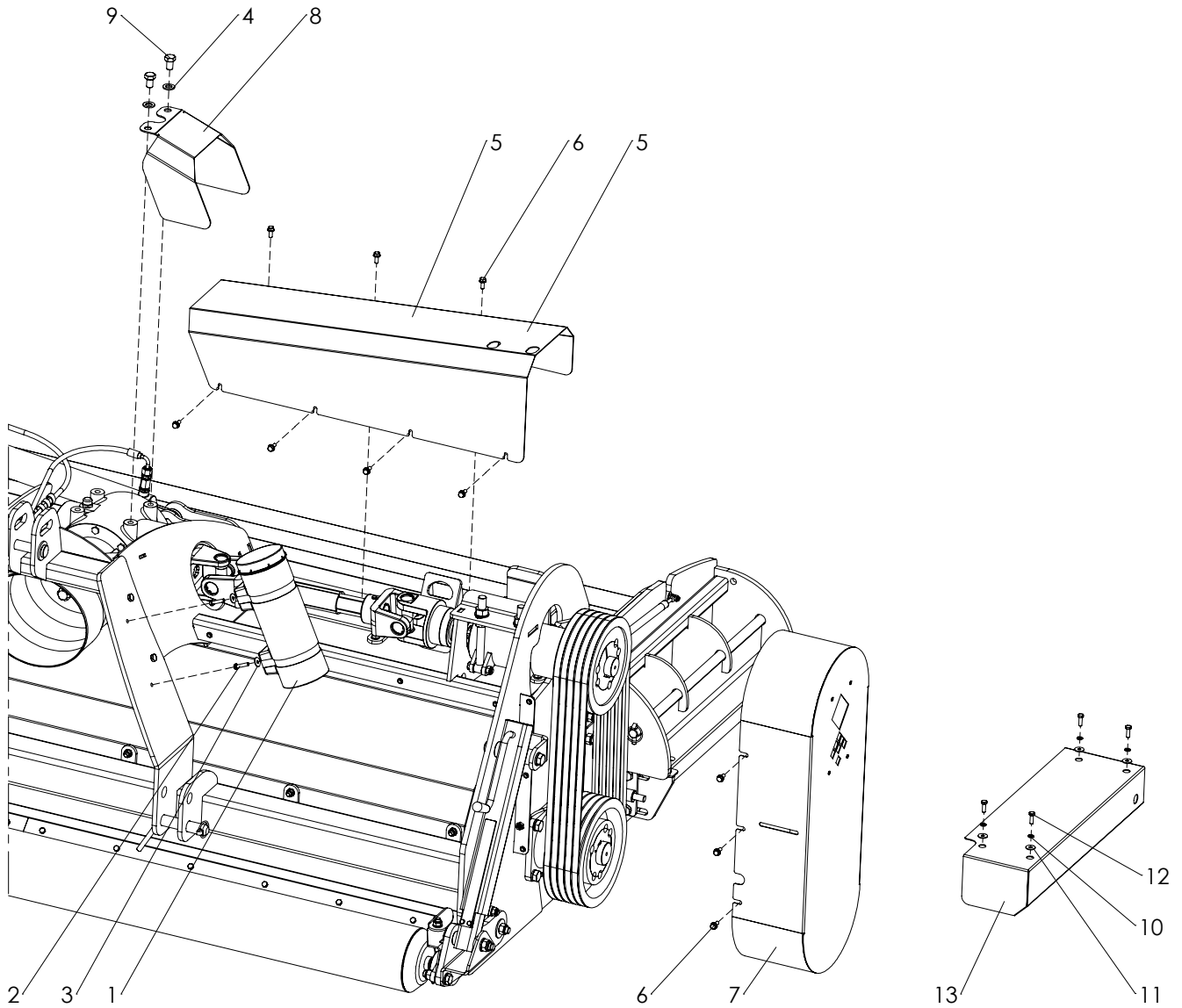
Version: 2148



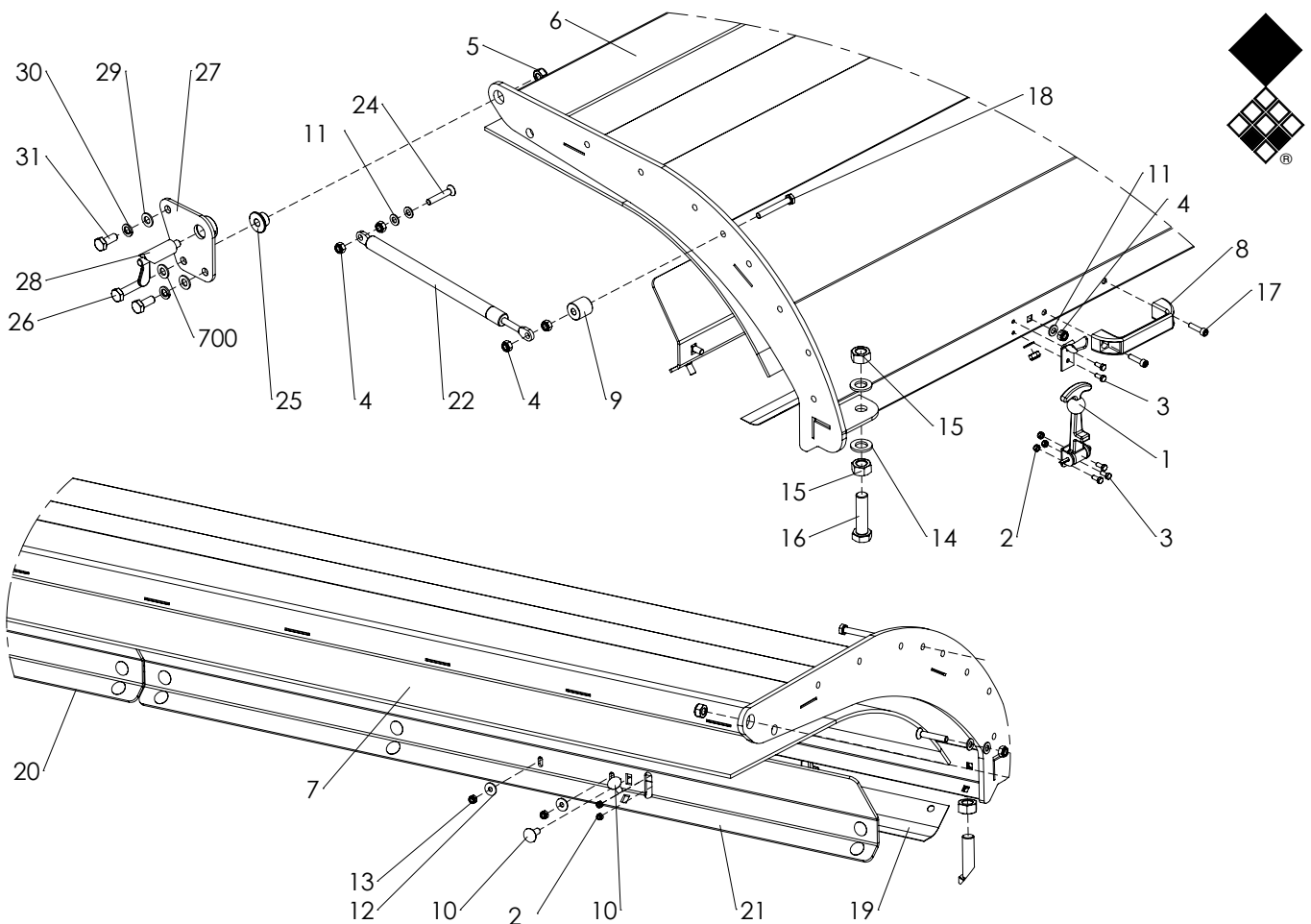
Decalls Page 1  
Optional Scarify blades Page 21  
Optional Hybrid rotor Page 22  
Optional Weight set Page 23  
Optional Flow guide Page 24  
PTO Page P1



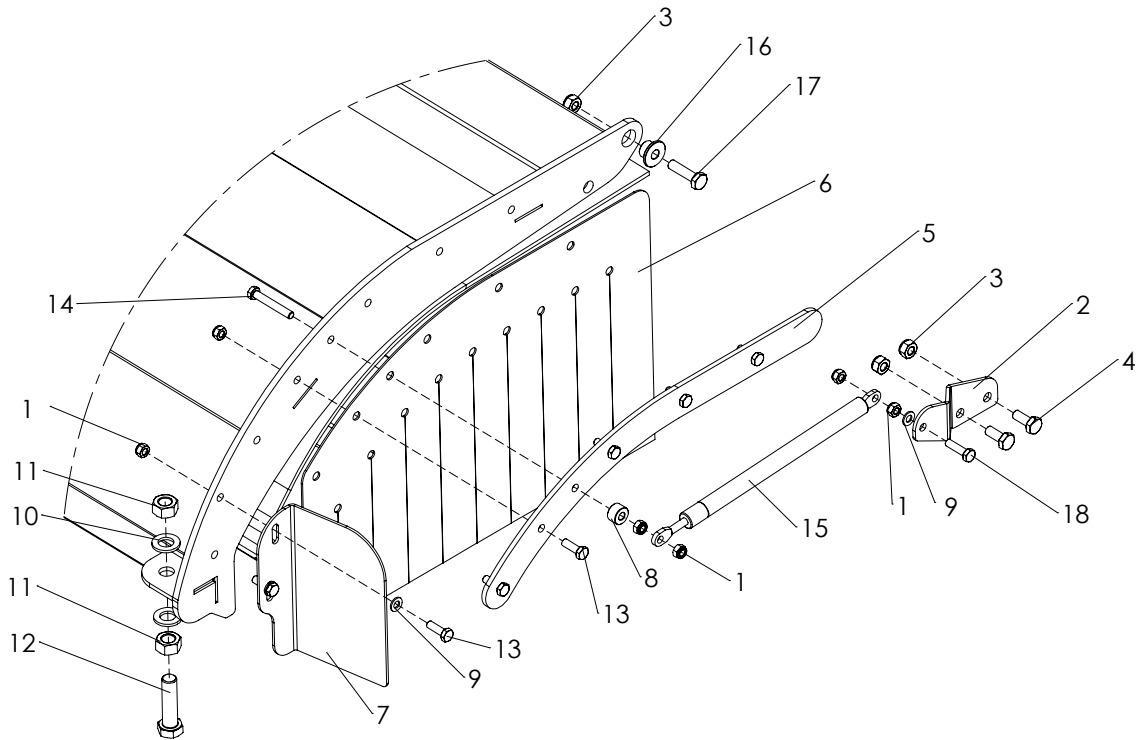
ITEM	PART NUMBER	DESCRIPTION	REMARKS	QUA
1	900.280.402	Safety decall manual		1
2	900.260.414	Decal Ruler		2
3	900.260.422	Decal PTO 350 540		1
4	933.280.402	Safety decal		2
5	953.340.000	Decall lifting point		2
6	900.260.401	Logo Label		2
7	953.260.202	Label Turf Stripper		1
8	911.280.404	Decal close cover		2
9	900.280.300	Safety decal conveyor belt		6



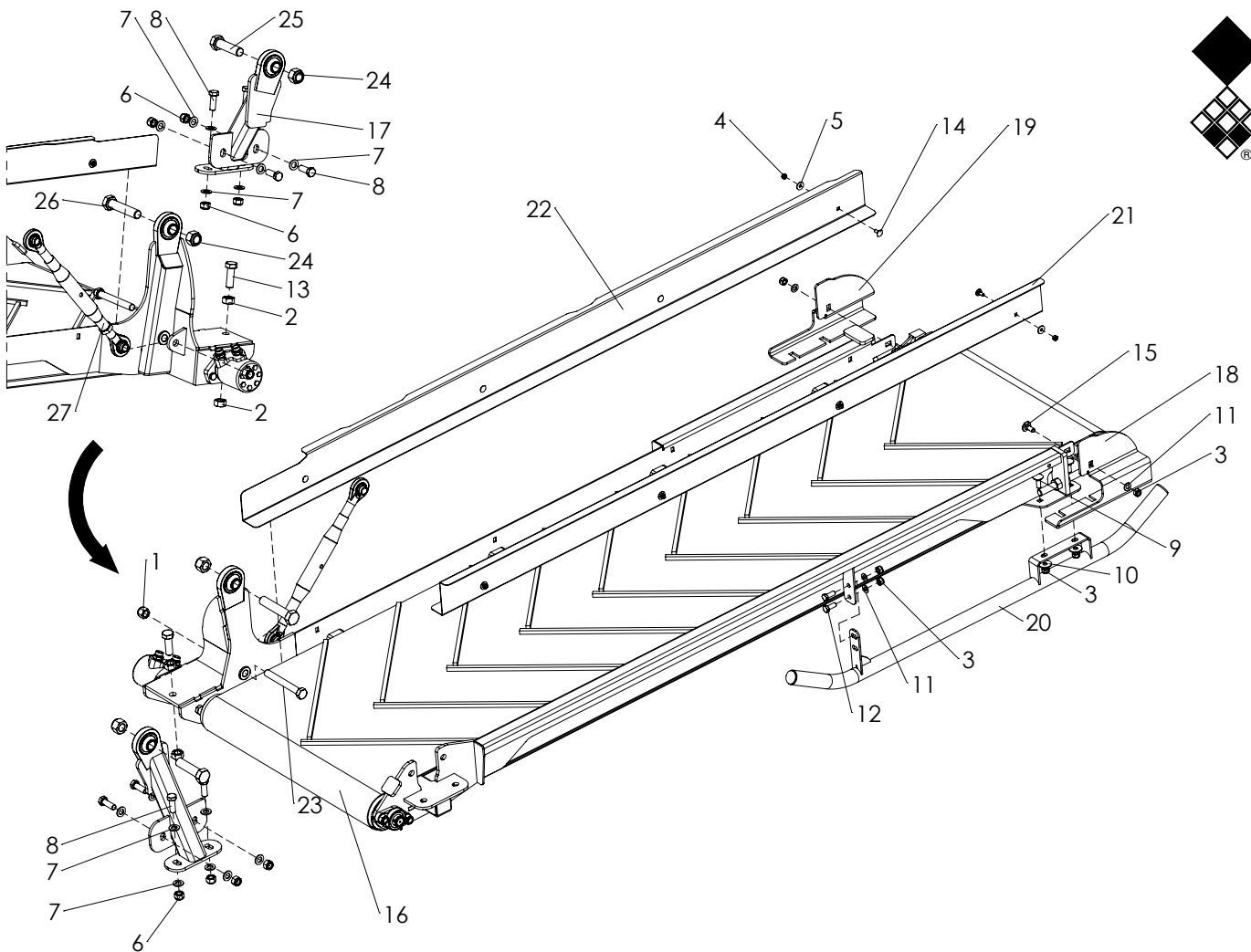
ITEM	PART NUMBER	DESCRIPTION	REMARKS	QUA
1	444.803.100	Toolbox Complete		1
2	804.080.350	Bolt M8 x 35 - ISO 4017		2
3	864.080.024	Large washer M8 - DIN 9021		2
4	864.160.030	Washer M16 - ISO 7089		2
5	456.097.031	Drive cover		1
6	805.080.200	Hex. flange bolt M8x20 Din 6921 Class 8.8		13
7	456.090.034	Cover		1
8	456.021.024	Cover		1
9	804.160.200	Bolt M16 x 20 - ISO 4017		2
10	866.080.020	Spring Washer M8 - DIN 127		4
11	864.080.024	Large washer M8 - DIN 9021		4
12	804.080.250	Bolt M8 x 25 - ISO 4017		4
13	456.023.070	Belt cover		1



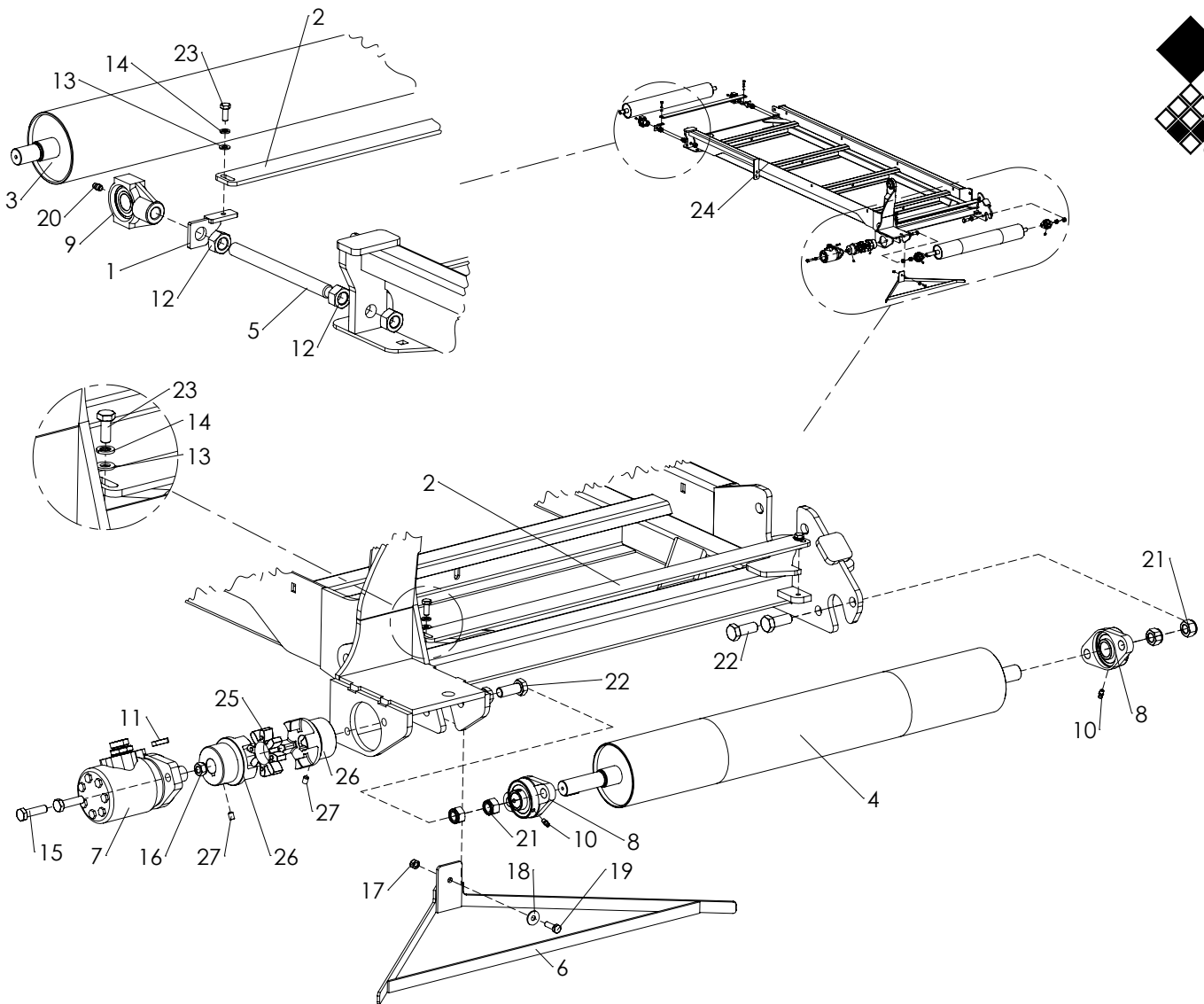
ITEM	PART NUMBER	DESCRIPTION	REMARKS	QUA
1	590.650.000	Rubber lock assy		2
2	830.050.050	Self Lock Nut M5 - ISO 10511		10
3	804.050.120	Bolt M5 x 12 - ISO 4017		10
4	830.080.080	Self Lock Nut M8 - ISO 10511		20
5	830.100.100	Self Lock Nut M10 - ISO 10511		1
6	456.243.070	Rear cover		1
7	444.059.239	Guide plate		1
8	444.151.250	Handle		2
9	406.090.250	Distance bush Ø25-Ø9 L=25		1
10	820.080.200	MH Bolt M8 x 20 ISO 8677		16
11	864.080.030	Washer M8 - ISO 7089		18
12	864.060.031	Large washer M6 - DIN 9021		4
13	830.060.060	Self Lock Nut M6 - ISO 10511		4
14	864.160.030	Washer M16 - ISO 7089		2
15	826.160.160	Nut M16 - DIN 934		2
16	804.160.600	Bolt M16 x 60 - ISO 4017		1
17	814.060.250	Bolt M6 x 25 - DIN 912		2
18	804.080.600	Bolt M8 x 60 - ISO 4017		1
19	446.019.240	Seal strip		1
20	469.049.120	MD plate left		1
21	469.049.122	MD plate right		1
22	571.153.912	Gas strut L525-500N		1
23	864.080.030	Washer M8 - ISO 7089		3
24	816.080.450	Bolt M8 x 45 DIN 7991		1
25	404.110.152	Collar bush		1
26	802.100.500	Bolt M10 x 50 - ISO 4014		1
27	470.051.130	Lock plate		1
28	590.200.750	Spring lock latch Ø10		1
29	864.100.030	Washer M10 - ISO 7089		3
30	866.100.020	Spring Washer M10 - DIN 127		2
31	804.100.250	Bolt M10 x 25 - ISO 4017		2



ITEM	PART NUMBER	DESCRIPTION	REMARKS	QUA
1	830.080.080	Self Lock Nut M8 - ISO 10511		11
2	468.041.484	Bracket		1
3	830.100.100	Self Lock Nut M10 - ISO 10511		3
4	804.100.250	Bolt M10 x 25 - ISO 4017		2
5	468.065.050	Clamp strip		1
6	446.025.100	Rubber gate		1
7	468.031.906	Material divider		1
8	402.080.120	Distance bush Ø20/Ø8.5 L=12		1
9	864.080.030	Washer M8 - ISO 7089		3
10	864.160.030	Washer M16 - ISO 7089		2
11	826.160.160	Nut M16 - DIN 934		2
12	804.160.600	Bolt M16 x 60 - ISO 4017		1
13	804.080.250	Bolt M8 x 25 - ISO 4017		7
14	804.080.550	Bolt M8 x 55 - ISO 4017		1
15	571.153.912	Gas strut L525-500N		1
16	404.110.152	Collar bush		1
17	802.100.400	Bolt M10 x 40 - ISO 4014 - 10.9		1
18	804.080.300	Bolt M8 x 30 - ISO 4017		1

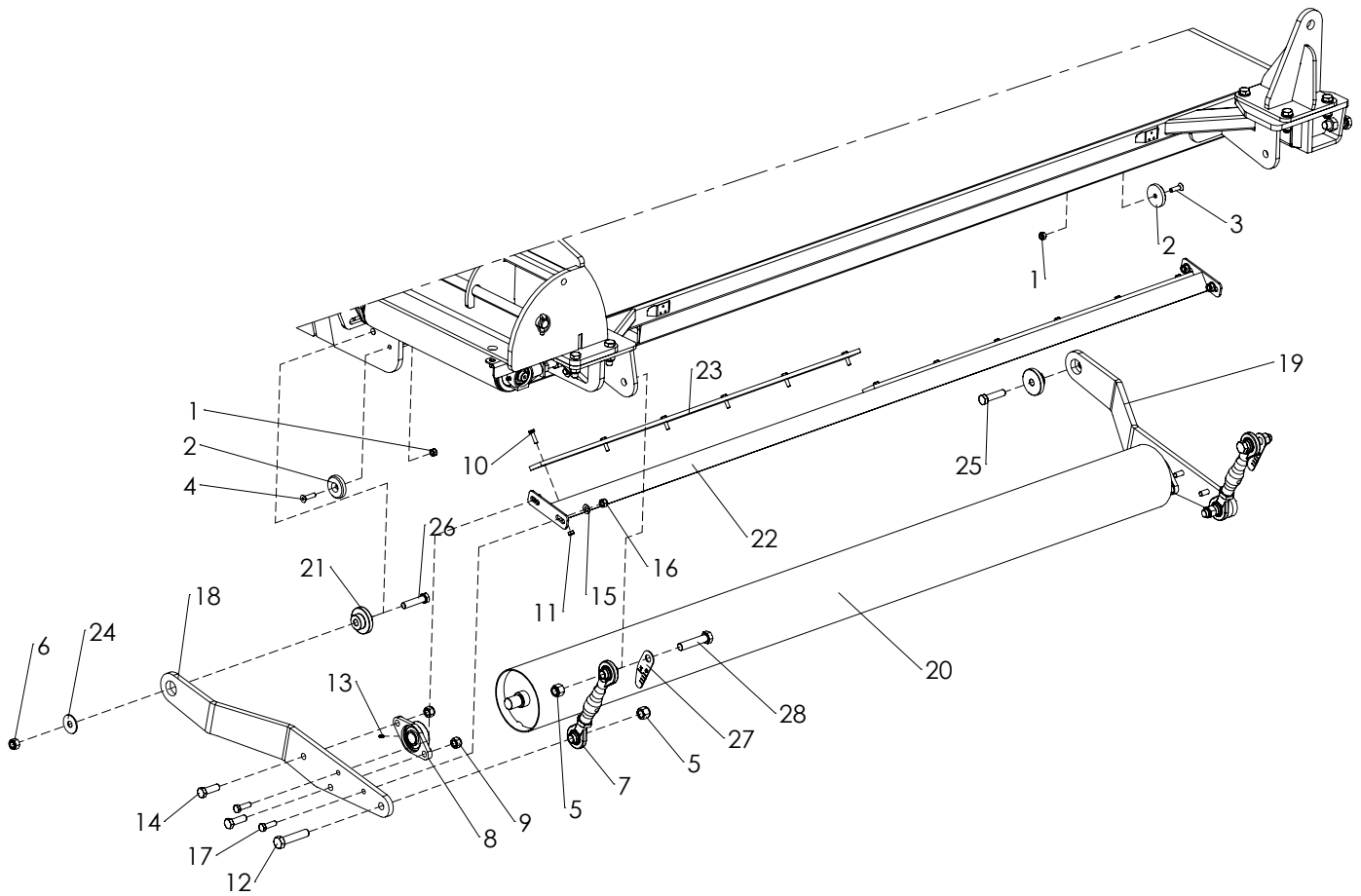


ITEM	PART NUMBER	DESCRIPTION	REMARKS	QUA
1	840.190.230	SL Nut 3/4"-16 UNF		2
2	826.200.200	Nut M20 - DIN 934		2
3	830.120.120	Self Lock Nut M12 - ISO 10511 Class 10		10
4	830.080.080	Self Lock Nut M8 - ISO 10511		8
5	864.080.024	Large washer M8 - DIN 9021		8
6	830.160.160	Self Lock Nut M16-ISO 10511 Class 10		4
7	864.160.030	Washer M16 - ISO 7089		8
8	804.160.450	Bolt M16 x 45 - ISO 4017		4
9	820.120.350	MH Bolt M12 x 35 ISO 8677		4
10	864.120.031	Large washer M12 - DIN 9021		4
11	864.120.030	Washer M12 - ISO 7089		6
12	804.120.300	Bolt M12 x 30 - ISO 4017		4
13	804.200.600	Bolt M20 x 60 - ISO 4017		1
14	820.080.200	MH Bolt M8 x 20 ISO 8677		8
15	820.120.300	MH Bolt M12 x 30 ISO 8677		2
16	492.149.570	Conveyor belt		1
17	494.390.021	Weldment ear bracket		1
18	468.063.504	Bearing support right		1
19	468.063.506	Bearing support left		1
20	476.172.914	Guide		2
21	468.029.227	Guide plate right		1
22	468.029.234	Guide plate left		1
23	808.191.530	Hex Bolt 0.75"-16x6" UNF - ANSI B18.2.1		1
24	838.010.220	Self Lock Nut 1 inch UNC - DIN 985		2
25	808.010.040	Hex Bolt 1"-8x4.0" UNC - ANSI B18.2.1 Grade 5.2 (8.8)		1
26	808.010.051	Hex Bolt 1"-8x5" UNC - ANSI B18.2.1		1
27	478.345.632	Reaction bar		1

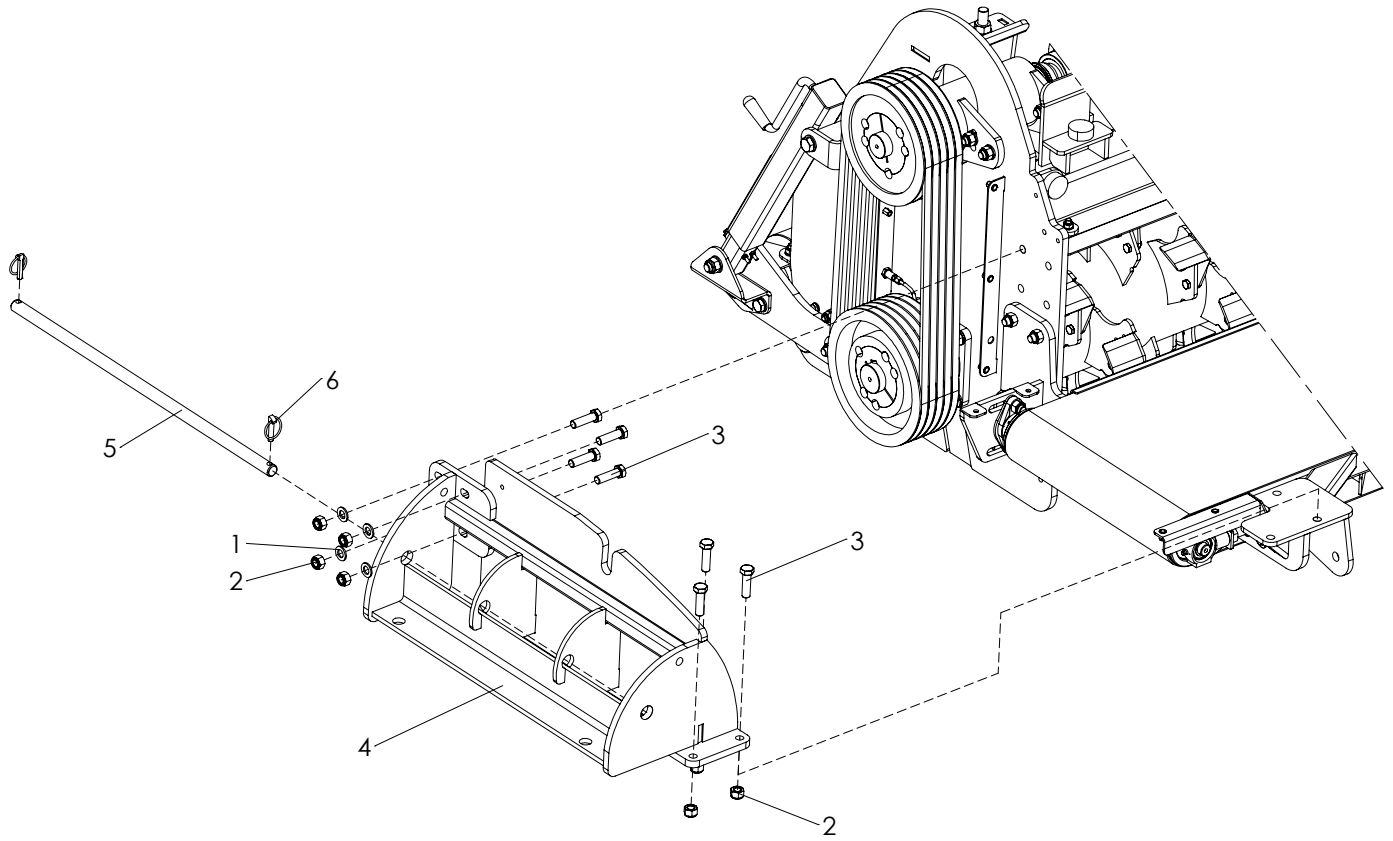


ITEM	PART NUMBER	DESCRIPTION	REMARKS	QUA
1	866.060.850	Scraper bracket		2
2	464.068.000	Scraper strip		2
3	488.110.774	Driven roller		1
4	488.110.776	Driver roller		1
5	852.202.300	Threaded rod M20		2
6	470.047.500	Scraper		1
7	532.251.900	Hydraulic motor OMP 80		1
8	742.250.360	Bearing UCFL 205		2
9	743.250.440	Bearing PHEY25		2
10	880.060.100	Grease nipple M6 DIN 71412A		2
11	884.080.320	Key 8x7x32 - DIN 6885		1
12	826.200.200	Nut M20 - DIN 934		6
13	864.080.030	Washer M8 - ISO 7089		4
14	866.080.020	Spring Washer M8 - DIN 127		4
15	804.120.450	Bolt M12 x 45 - ISO 4017		2
16	830.120.120	Self Lock Nut M12 - ISO 10511 Class 10		2
17	830.080.080	Self Lock Nut M8 - ISO 10511		1
18	864.080.024	Large washer M8 - DIN 9021		1
19	804.080.250	Bolt M8 x 25 - ISO 4017		1
20	880.090.100	Grease nipple Rp 1/8 straight		2
21	830.160.160	Self Lock Nut M16-ISO 10511 Class 10		4
22	804.160.400	Bolt M16 x 40 - ISO 4017		4
23	804.080.200	Bolt M8 x 20 - ISO 4017		4
24	494.263.108	External conveyor frame		1
25	665.800.220	Coupling Rubber EGE-3-RP 98° Shore		1
26	665.250.660	Coupling half A3825 Cast Iron		2
27	818.080.120	Set screw M8 x 12 - DIN 916		2

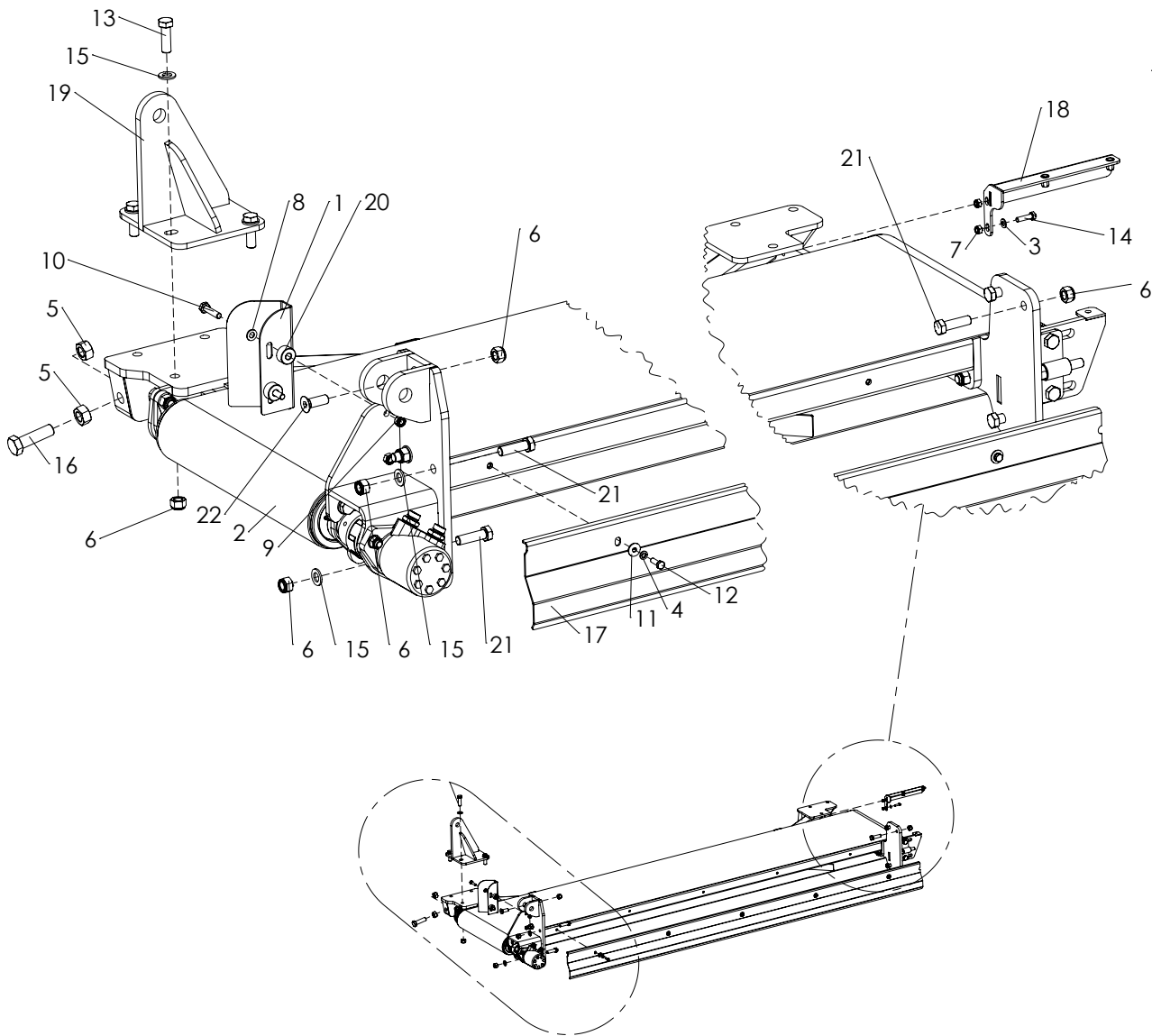




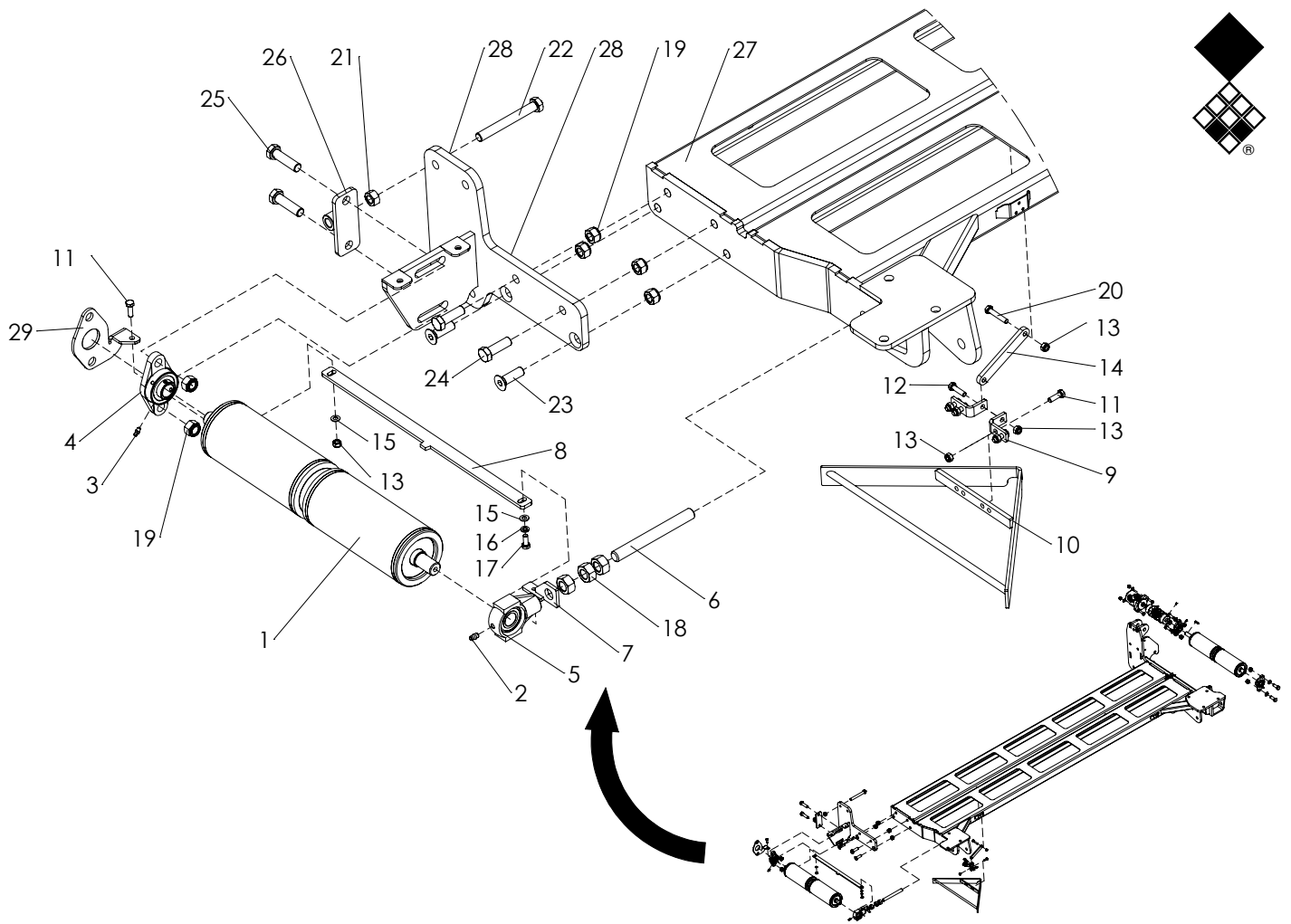
ITEM	PART NUMBER	DESCRIPTION	REMARKS	QUA
1	830.100.100	Self Lock Nut M10 - ISO 10511		2
2	444.120.600	Slider bush		2
3	816.100.350	Bolt M10 x 35 - DIN 7991		1
4	816.100.400	Bolt M10 x 40 - DIN 7991		1
5	840.190.230	SL Nut 3/4"-16 UNF		4
6	830.160.160	Self Lock Nut M16-ISO 10511 Class 10		2
7	522.242.150	Toplink CAT1 215-300mm		2
8	742.300.400	Bearing UCFL206		2
9	830.160.160	Self Lock Nut M16-ISO 10511 Class 10		4
10	804.080.300	Bolt M8 x 30 - ISO 4017		12
11	830.080.080	Self Lock Nut M8 - ISO 10511		12
12	808.190.890	Hex Bolt 3/4-16 L=3.5 UNF		2
13	880.060.100	Grease nipple M6 DIN 71412A		2
14	802.160.500	Bolt M16 x 50 - ISO 4014		4
15	864.120.030	Washer M12 - ISO 7089		4
16	830.120.120	Self Lock Nut M12 - ISO 10511 Class 10		4
17	804.120.400	Bolt M12 x 40 - ISO 4017		4
18	468.157.550	Left rear roller support		1
19	468.157.552	Left rear roller support		1
20	488.168.276	Roller Ø168 L=2200		1
21	404.160.282	Pivot bush		2
22	494.228.015	Scraper bar		1
23	444.109.110	Scraper strip		2
24	864.160.031	Large washer M16 - DIN 9021		2
25	802.160.650	Bolt M16 x 65 - ISO 4014 - 10.9		1
26	802.160.700	Bolt M16 x 70 - ISO 4014 - 10.9		1
27	468.031.172	Depth adjustment gauge		2
28	808.190.890	Hex Bolt 3/4-16 L=3.5 UNF		2



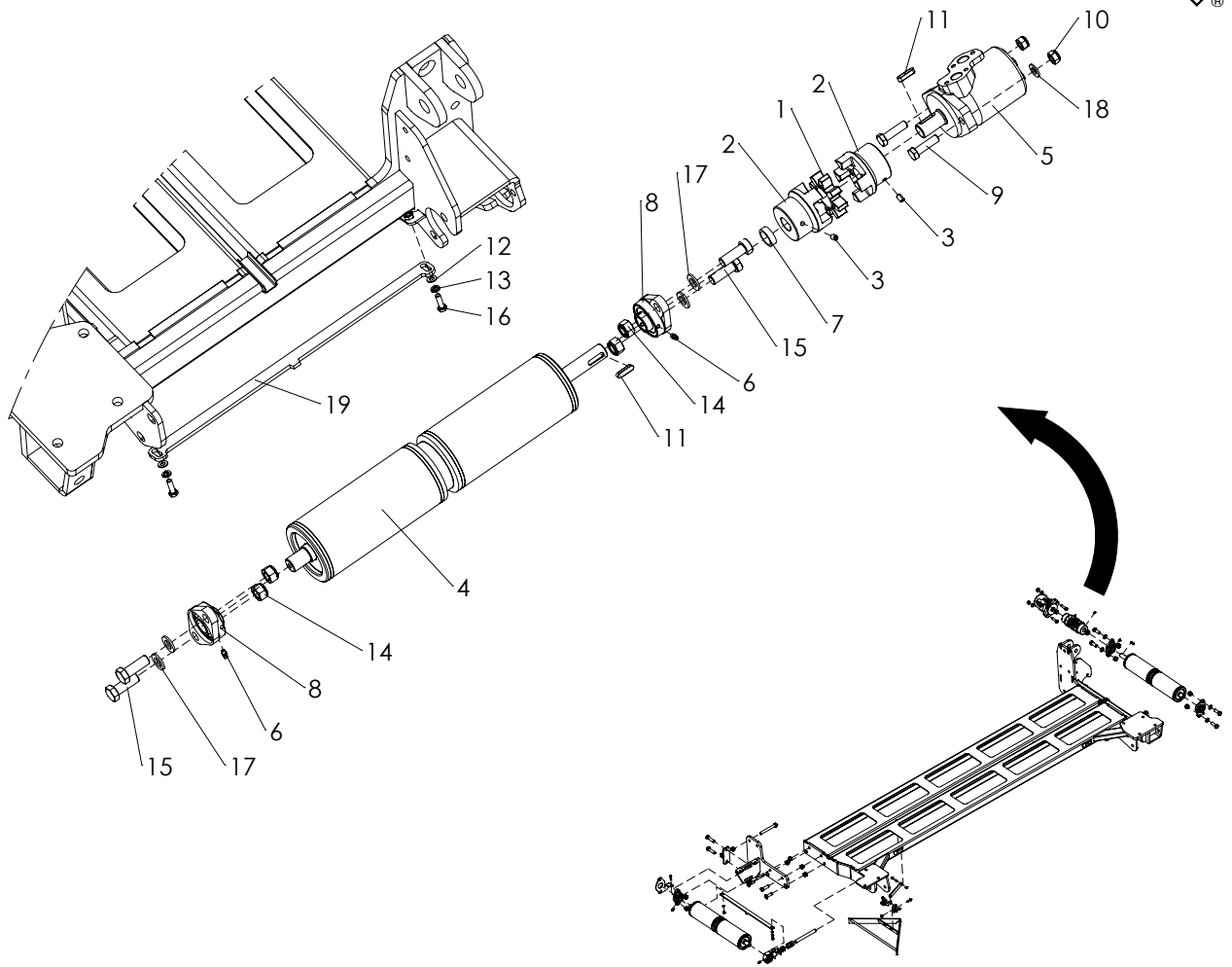
ITEM	PART NUMBER	DESCRIPTION	REMARKS	QUA
1	864.160.030	Washer M16 - ISO 7089		7
2	830.160.160	Self Lock Nut M16-ISO 10511 Class 10		7
3	804.160.550	Bolt M16 x 55 - ISO 4017		7
4	494.087.033	Weight bar bracket		1
5	414.258.000	Shaft		1
6	523.100.570	Linch Pin d10		2



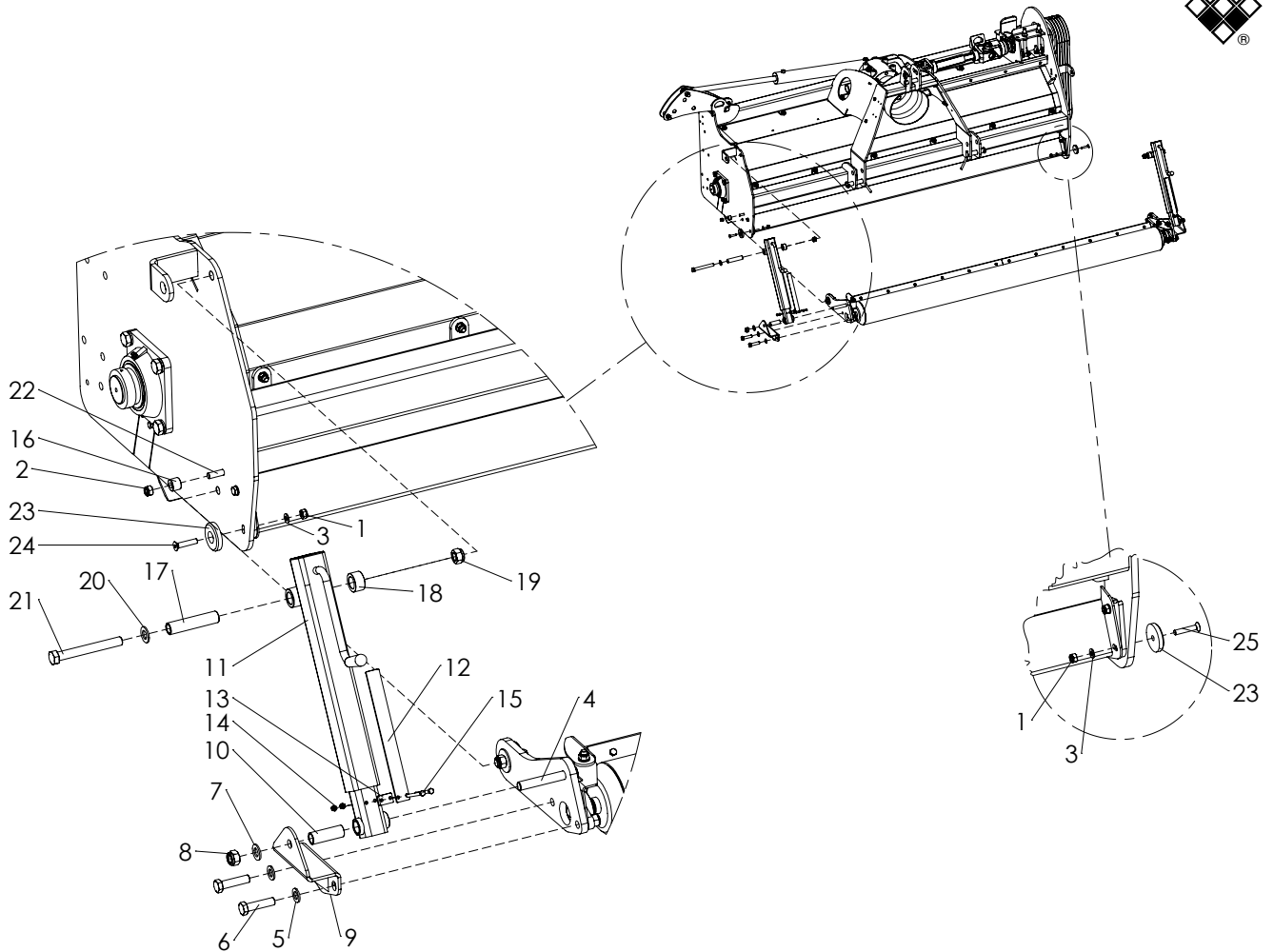
ITEM	PART NUMBER	DESCRIPTION	REMARKS	QUA
1	468.032.104	Material divider		1
2	492.039.570	Conveyor belt		1
3	864.080.030	Washer M8 - ISO 7089		2
4	866.080.020	Spring Washer M8 - DIN 127		5
5	826.200.200	Nut M20 - DIN 934		2
6	830.160.160	Self Lock Nut M16-ISO 10511 Class 10		13
7	830.080.080	Self Lock Nut M8 - ISO 10511		2
8	864.100.030	Washer M10 - ISO 7089		2
9	830.100.100	Self Lock Nut M10 - ISO 10511		2
10	804.100.450	Bolt M10 x 45 - ISO 4017		2
11	864.080.024	Large washer M8 - DIN 9021		5
12	804.080.250	Bolt M8 x 25 - ISO 4017		5
13	804.160.500	Bolt M16 x 50 - ISO 4017		4
14	804.080.300	Bolt M8 x 30 - ISO 4017		2
15	864.160.030	Washer M16 - ISO 7089		8
16	804.200.700	Bolt M20 x 70 - ISO 4017		1
17	468.039.244	Deflection cover belt		1
18	470.042.500	Bracket		1
19	470.102.050	Conveyor pivot		1
20	406.110.170	Distance bush		2
21	804.160.550	Bolt M16 x 55 - ISO 4017		8
22	816.160.452	Bolt M16 x 45 - DIN 7991		1



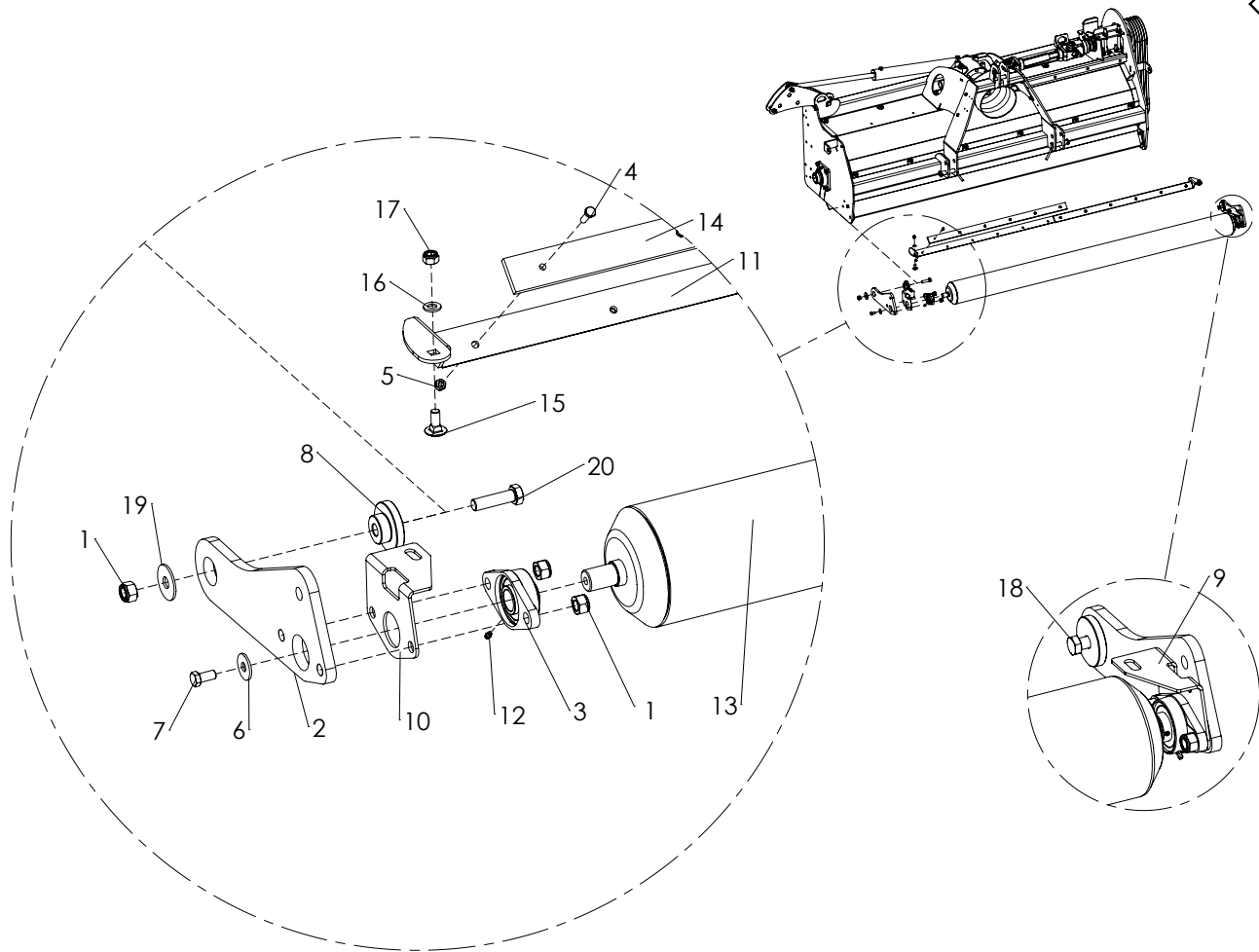
ITEM	PART NUMBER	DESCRIPTION	REMARKS	QUA
1	488.110.652	Driven roller		1
2	880.090.100	Grease nipple Rp 1/8 straight		1
3	880.060.100	Grease nipple M6 DIN 71412A		3
4	742.250.360	Bearing UCFL 205		3
5	743.250.440	Bearing PHEY25		1
6	852.201.800	Threaded rod M20 L=180		1
7	866.060.850	Scraper bracket		1
8	464.065.404	Roller scraper		1
9	464.050.502	Bracket		2
10	466.055.000	Triangular scraper		1
11	804.080.250	Bolt M8 x 25 - ISO 4017		5
12	804.080.300	Bolt M8 x 30 - ISO 4017		1
13	830.080.080	Self Lock Nut M8 - ISO 10511		7
14	464.081.300	Strip 20x8 L=130		1
15	864.080.030	Washer M8 - ISO 7089		2
16	866.080.020	Spring Washer M8 - DIN 127		1
17	804.080.200	Bolt M8 x 20 - ISO 4017		1
18	826.200.200	Nut M20 - DIN 934		3
19	830.160.160	Self Lock Nut M16-ISO 10511 Class 10		6
20	802.080.450	Bolt M8 x 45 - ISO 4014		1
21	826.160.160	Nut M16 - DIN 934		1
22	804.161.300	Bolt M16 x 130 - ISO 4017		1
23	816.160.500	Bolt M16 x 50 - DIN 7991		2
24	802.160.500	Bolt M16 x 50 - ISO 4014		2
25	804.160.600	Bolt M16 x 60 - ISO 4017		2
26	472.081.300	Spanner bracket		1
27	494.270.935	Fixed conveyor frame		1
28	470.154.100	Bearing bracket		1
29	468.051.302	Scraper bracket		1



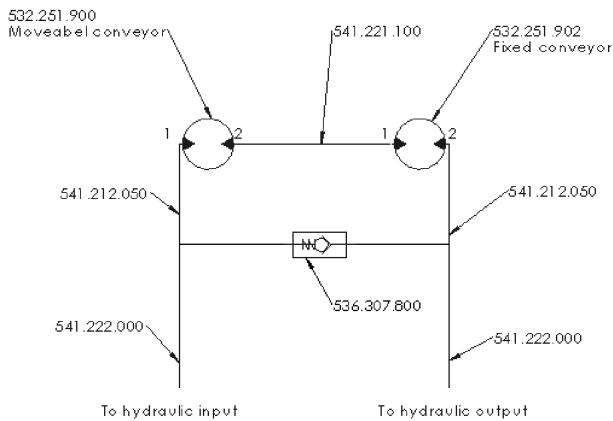
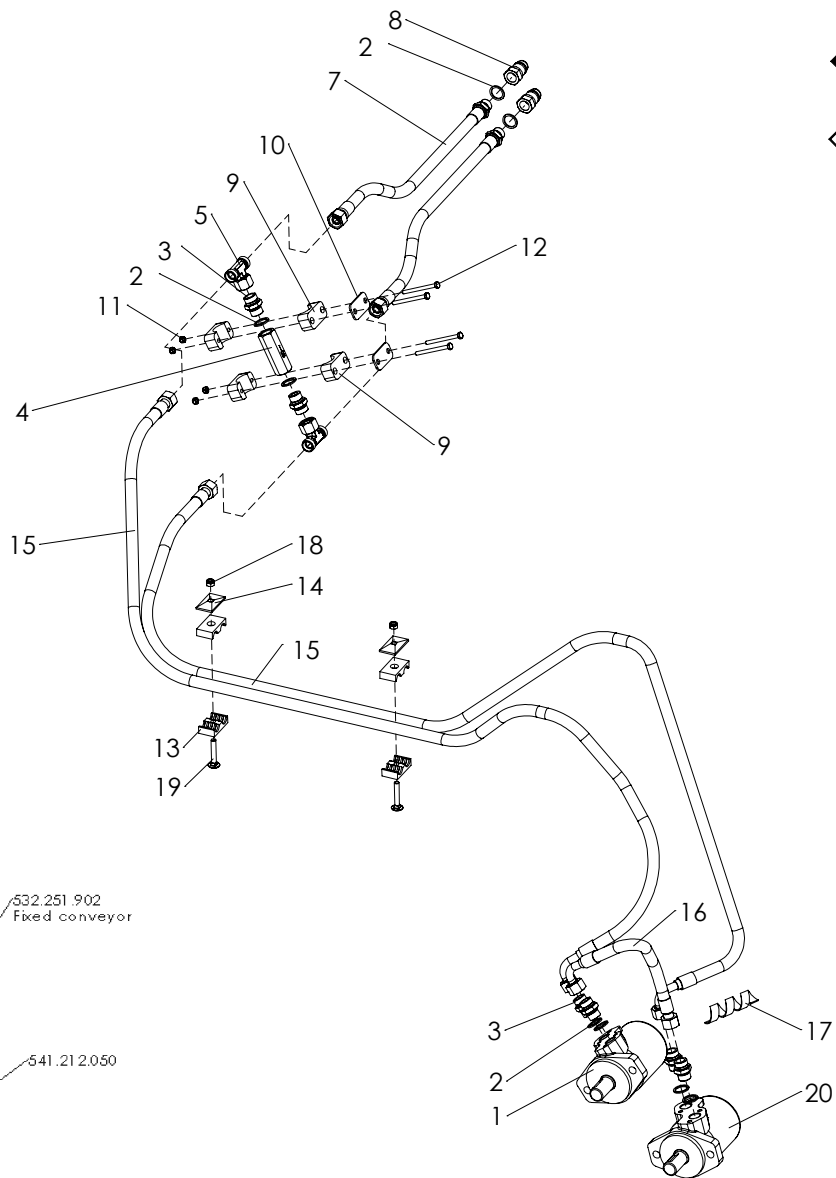
ITEM	PART NUMBER	DESCRIPTION	REMARKS	QUA
1	665.800.220	Coupling Rubber EGE-3-RP 98° Shore		1
2	665.250.660	Coupling half A3825 Cast Iron		2
3	818.080.120	Set screw M8 x 12 - DIN 916		2
4	488.110.650	Driver roller		1
5	532.251.902	Hydraulic motor OMP 100		1
6	880.060.100	Grease nipple M6 DIN 71412A		2
7	406.250.100	Distance bush Ø32/Ø25.5 L=10		1
8	742.250.360	Bearing UCFL 205		2
9	804.120.450	Bolt M12 x 45 - ISO 4017		2
10	830.120.120	Self Lock Nut M12 - ISO 10511 Class 10		2
11	884.080.320	Key 8x7x32 - DIN 6885		2
12	864.080.030	Washer M8 - ISO 7089		6
13	866.080.020	Spring Washer M8 - DIN 127		2
14	830.160.160	Self Lock Nut M16-ISO 10511 Class 10		4
15	804.160.450	Bolt M16 x 45 - ISO 4017		4
16	804.080.250	Bolt M8 x 25 - ISO 4017		2
17	864.160.030	Washer M16 - ISO 7089		4
18	864.120.030	Washer M12 - ISO 7089		2
19	464.065.802	Roller scraper		1



ITEM	PART NUMBER	DESCRIPTION	REMARKS	QUA
1	830.100.100	Self Lock Nut M10 - ISO 10511		2
2	830.120.120	Self Lock Nut M12 - ISO 10511 Class 10		2
3	864.100.030	Washer M10 - ISO 7089		2
4	802.181.200	Bolt M18x120 - ISO 4014 - 8.8		2
5	864.160.030	Washer M16 - ISO 7089		4
6	802.160.650	Bolt M16 x 65 - ISO 4014 - 10.9		4
7	864.180.030	Washer M18 - ISO 7089		4
8	830.180.180	Self Lock Nut M18 - ISO 10511 - 10.9		4
9	470.061.570	Support bracket		2
10	406.190.720	Distance bush D25/D19 L=72		2
11	460.705.650	Jack TS2000		2
12	464.042.800	Height Indicator Strip, L= 280		2
13	464.080.300	Distance Block		2
14	830.060.060	Self Lock Nut M6 - ISO 10511		4
15	802.060.800	Bolt M6 x 80 - ISO 4014		4
16	402.130.200	Bush Ø12.5/Ø25 L=19.5		2
17	406.191.130	Distance bush		2
18	406.260.220	Distance bush		2
19	830.180.180	Self Lock Nut M18 - ISO 10511 - 10.9		2
20	864.180.030	Washer M18 - ISO 7089		2
21	802.181.150	Bolt M18 x 150 - ISO 4014		2
22	802.120.450	Bolt M12 x 45 ISO 4014 Class 10.9		2
23	444.120.600	Slider bush		2
24	816.100.502	Bolt M10 x 50 - DIN 7991		1
25	816.100.550	Bolt M10 x 55 - DIN 7991		1

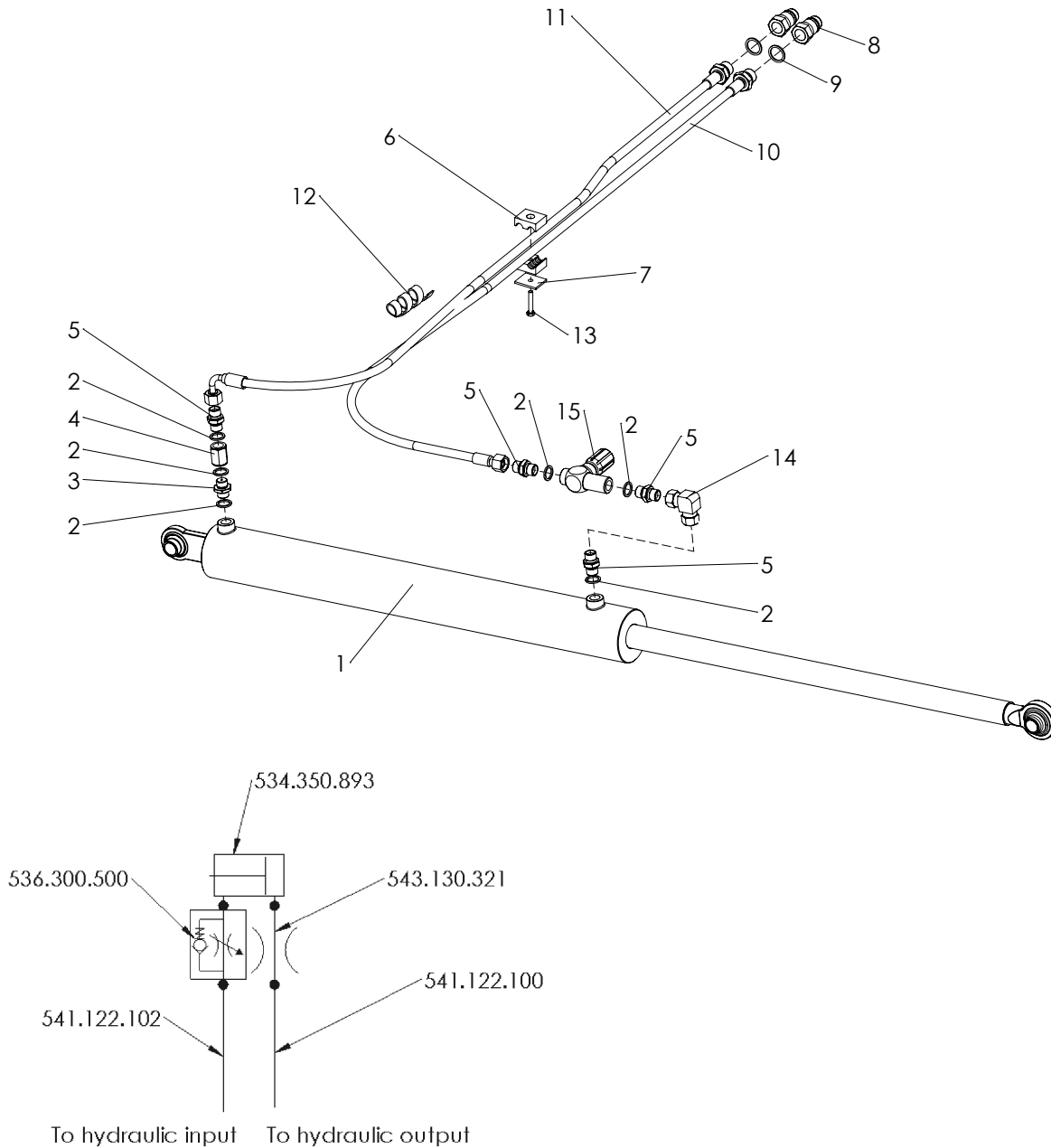


ITEM	PART NUMBER	DESCRIPTION	REMARKS	QUA
1	830.160.160	Self Lock Nut M16-ISO 10511 Class 10		6
2	468.153.992	Front roller support		2
3	742.300.400	Bearing UCFL206		2
4	804.080.300	Bolt M8 x 30 - ISO 4017		12
5	830.080.080	Self Lock Nut M8 - ISO 10511		12
6	864.120.031	Large washer M12 - DIN 9021		2
7	804.120.250	Bolt M12 x 25 - ISO 4017		2
8	404.160.282	Pivot bush		2
9	468.041.480	Scraper back left		1
10	468.041.482	Scraper back right		1
11	494.242.013	Scraper bar TS2400		1
12	880.060.100	Grease nipple M6 DIN 71412A		2
13	488.168.248	Roller Ø168.3 L=2476		1
14	444.109.115	Scraper strip		2
15	820.120.300	MH Bolt M12 x 30 ISO 8677		2
16	864.120.030	Washer M12 - ISO 7089		2
17	830.120.120	Self Lock Nut M12 - ISO 10511 Class 10		2
18	802.160.700	Bolt M16 x 70 - ISO 4014 - 10.9		1
19	864.160.031	Large washer M16 - DIN 9021		2
20	802.160.600	Bolt M16 x 60 - ISO 4014 - 10.9		1

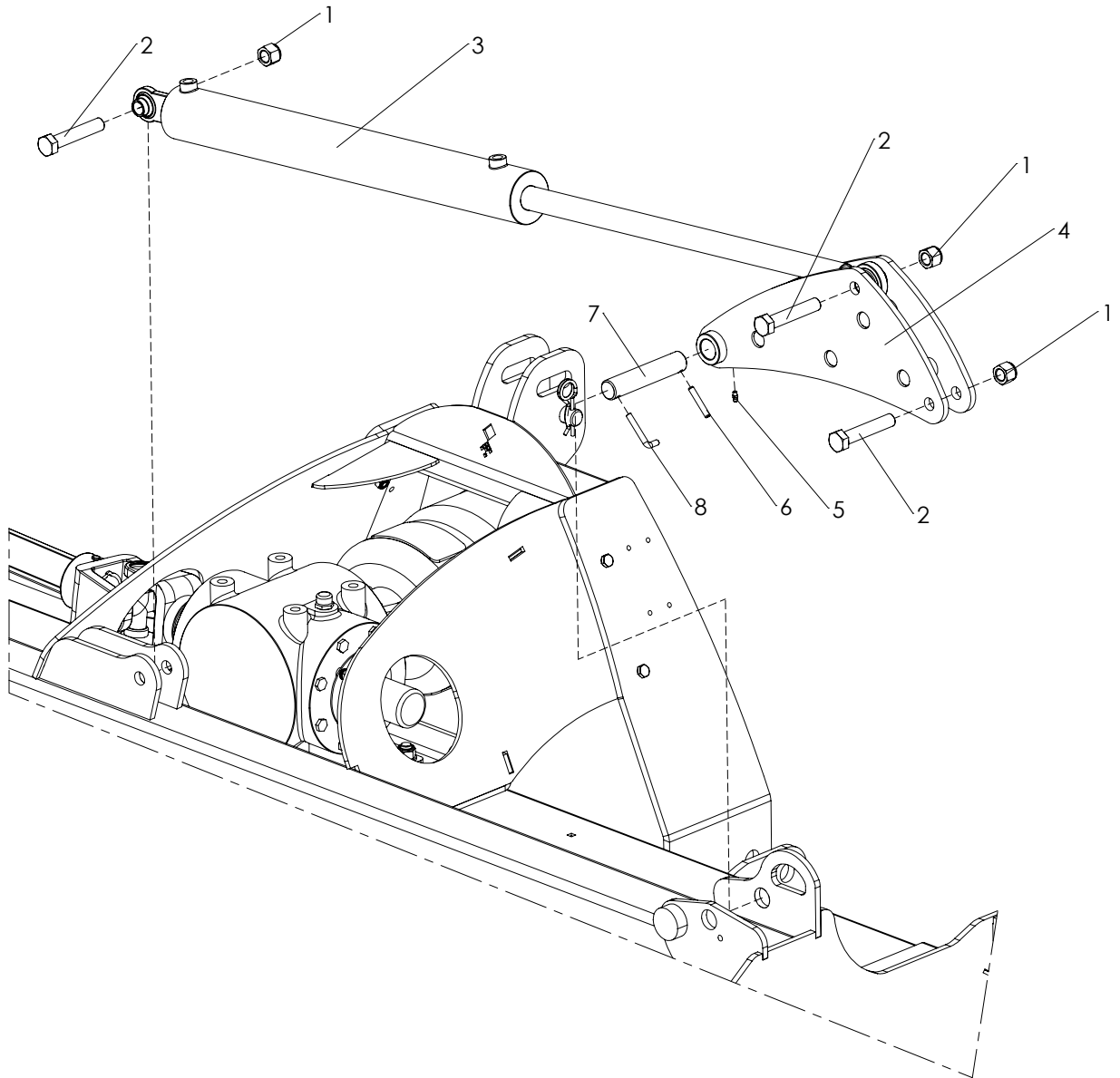


ITEM	PART NUMBER	DESCRIPTION	REMARKS	QUA
1	532.251.902	Hydraulic motor OMP 100		1
2	874.210.020	Copper washer 1_2		8
3	544.210.150	Nipple BSP 1_2" x pipe 15 (M22)		6
4	536.307.800	SL Non-Return Valve 1/2", 10.0 bar		1
5	544.154.702	T-Connector. Pipe 15-M22		2
6	544.210.150	Nipple BSP 1_2" x pipe 15 (M22)		2
7	541.222.000	Hydraulic hose NSK13 (1/2")		2
8	545.210.800	Quick connector male 1/2"		2
9	547.300.302	Pipe clamp single Ø30 Gr4		2
10	549.300.570	Deck plate Gr4		2
11	830.060.060	Self Lock Nut M6 - ISO 10511		4
12	802.060.700	Bolt M6 x 70 - ISO 4014		4
13	547.180.180	Hose clamp double 18mm		2
14	547.300.510	Cover plate hose clamp 2x15 - 2x18		2
15	541.212.050	Hose NSK13 (1/2") TL=2050 PGLO1322 + PGLO132290		2
16	541.221.100	Hose NSK13 (1/2") TL=1100 PGLO1322 + PGLO132290		1
17	549.015.000	Hose protection L=500		1
18	830.080.080	Self Lock Nut M8 - ISO 10511		2
19	820.080.500	MH Bolt M8 x 50 ISO 8677		2
20	532.251.900	Hydraulic motor OMP 80		1

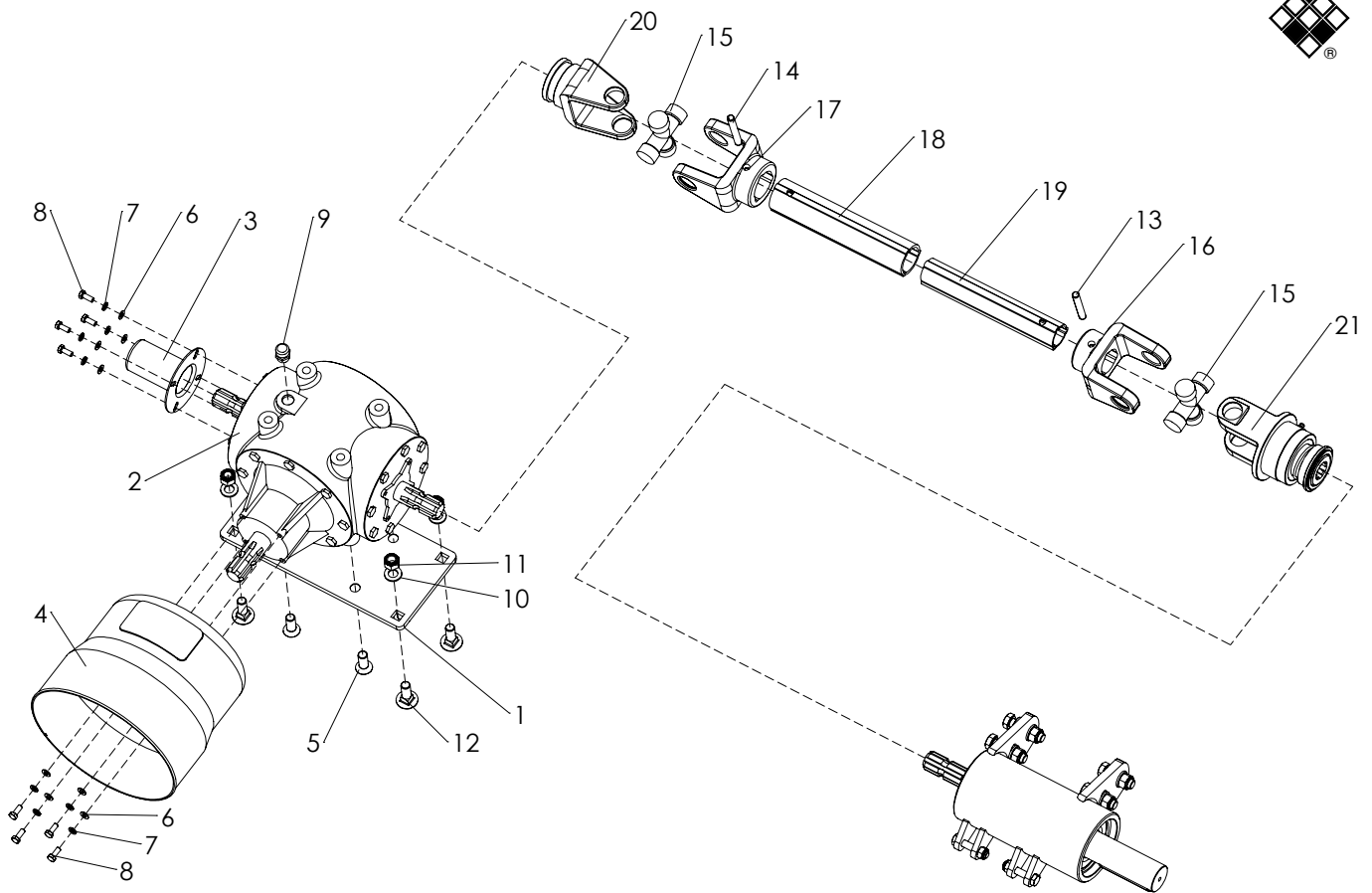




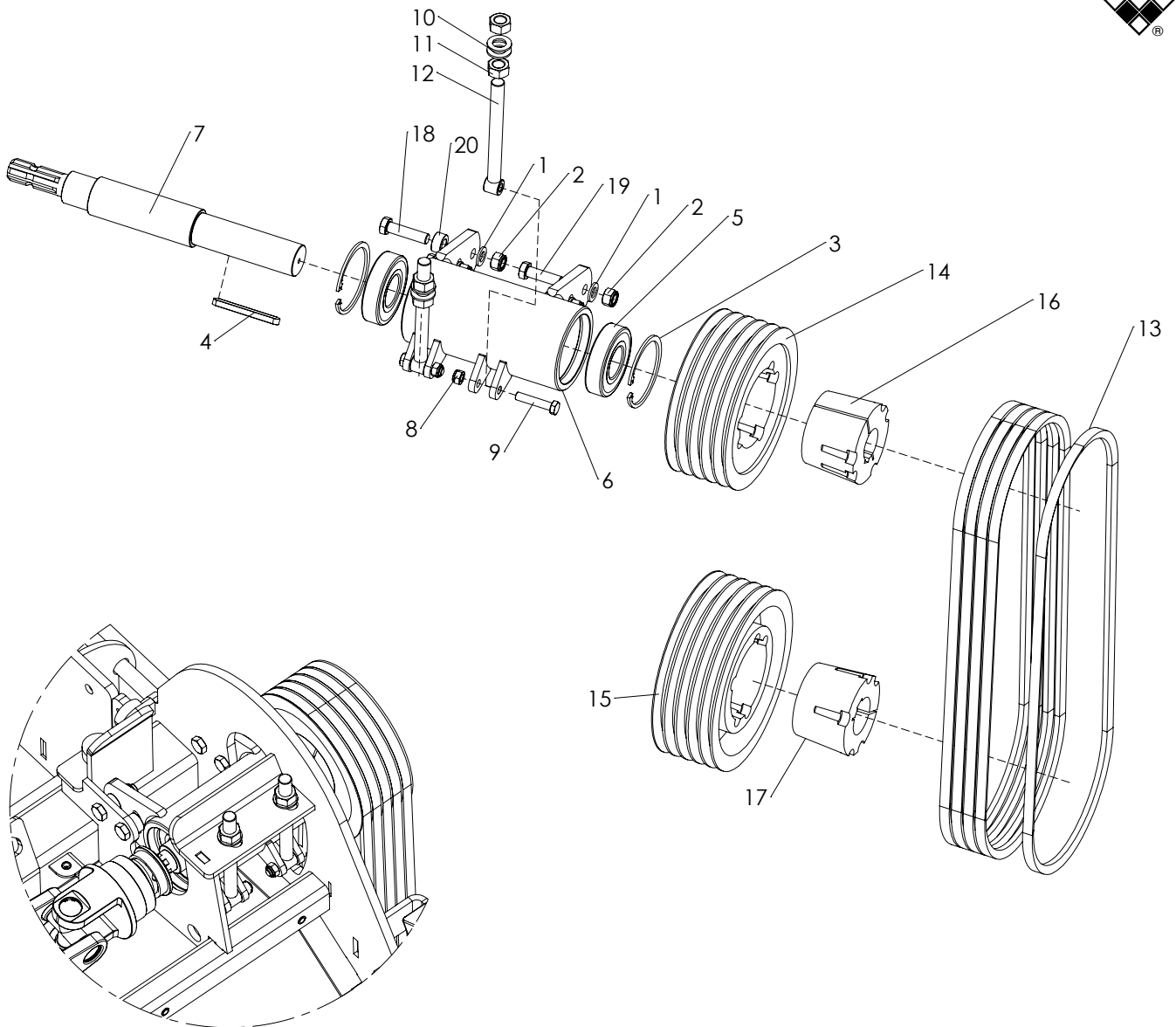
ITEM	PART NUMBER	DESCRIPTION	REMARKS	QUA
1	534.350.893	Hydraulic cylinder 35-70-600		1
2	874.170.020	Copper washer 3_8		6
3	543.130.321	Nipple with flow reducer		1
4	543.130.330	Threaded bush		1
5	543.170.170	Nipple BSP 3_8" x 3_8" 60deg		4
6	547.120.120	Hose clamp double 12mm		1
7	547.300.340	Cover plate hose clamp 2x10 - 2x12		1
8	545.210.800	Quick connector male 1/2"		2
9	874.210.020	Copper washer 1_2		2
10	541.122.102	Hose NSK6 (1/4") TL=2200 PF64 + PN68		1
11	541.122.100	Hose NSK6 (1/4") TL=2200 PF6490 + PN68		1
12	549.015.000	Hose protection L=500		1
13	802.060.350	Bolt M6 x 35 - ISO 4017		1
14	543.210.140	L-Connector 2x 3/8"BSP contra		1
15	536.300.500	Flow reducer 3/8" FPU05001		1



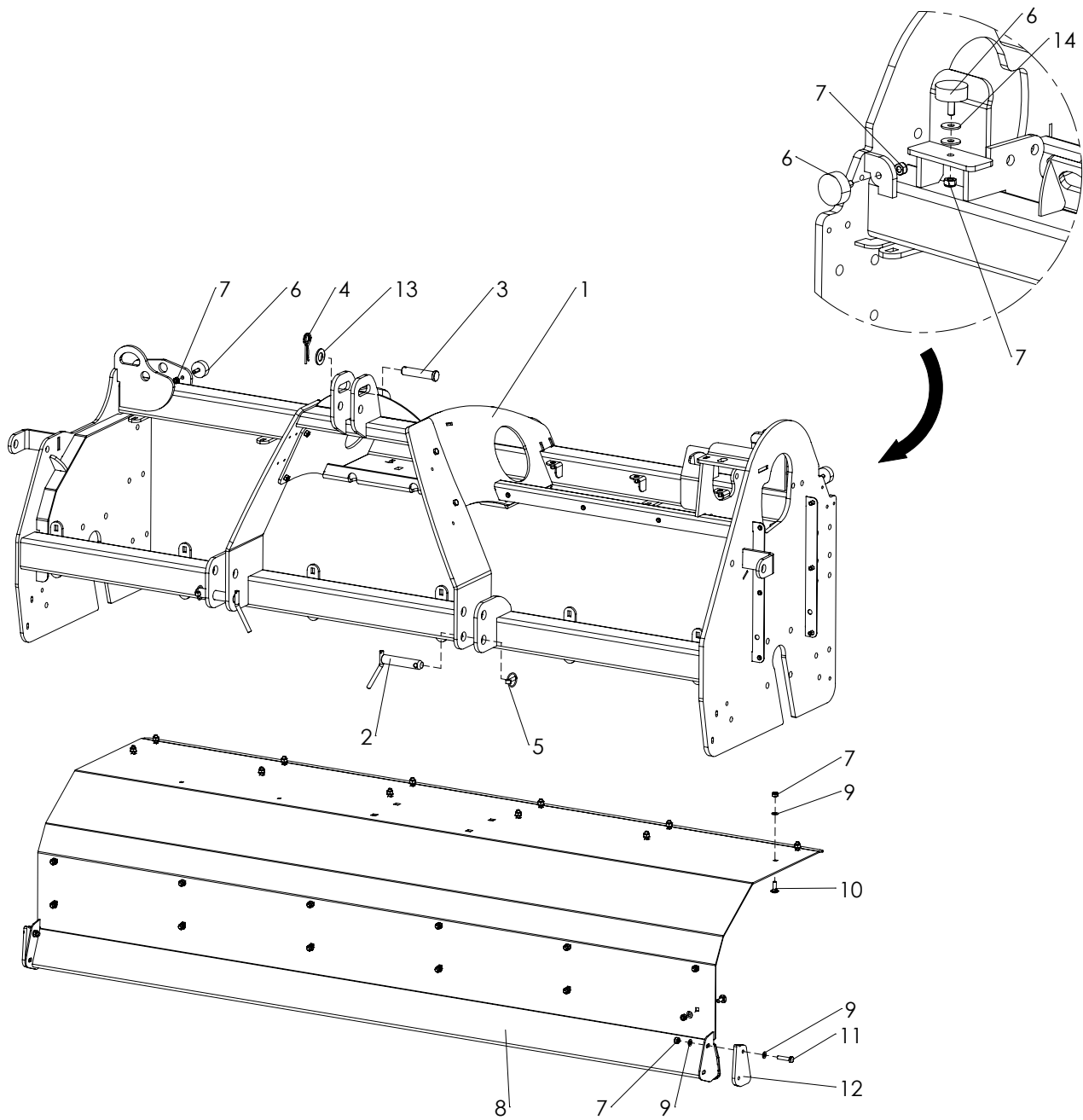
ITEM	PART NUMBER	DESCRIPTION	REMARKS	QUA
1	840.190.230	SL Nut 3/4"-16 UNF		3
2	808.191.000	Hex Bolt 3/4-16 L=4 UNF		3
3	534.350.893	Hydraulic cylinder 35-70-600		1
4	470.965.052	Lifting yoke		1
5	880.060.100	Grease nipple M6 DIN 71412A		1
6	878.080.500	Roll Pin 8 x 50 - ISO 8752		1
7	414.301.500	Shaft		1
8	424.080.590	Lock Pin		1



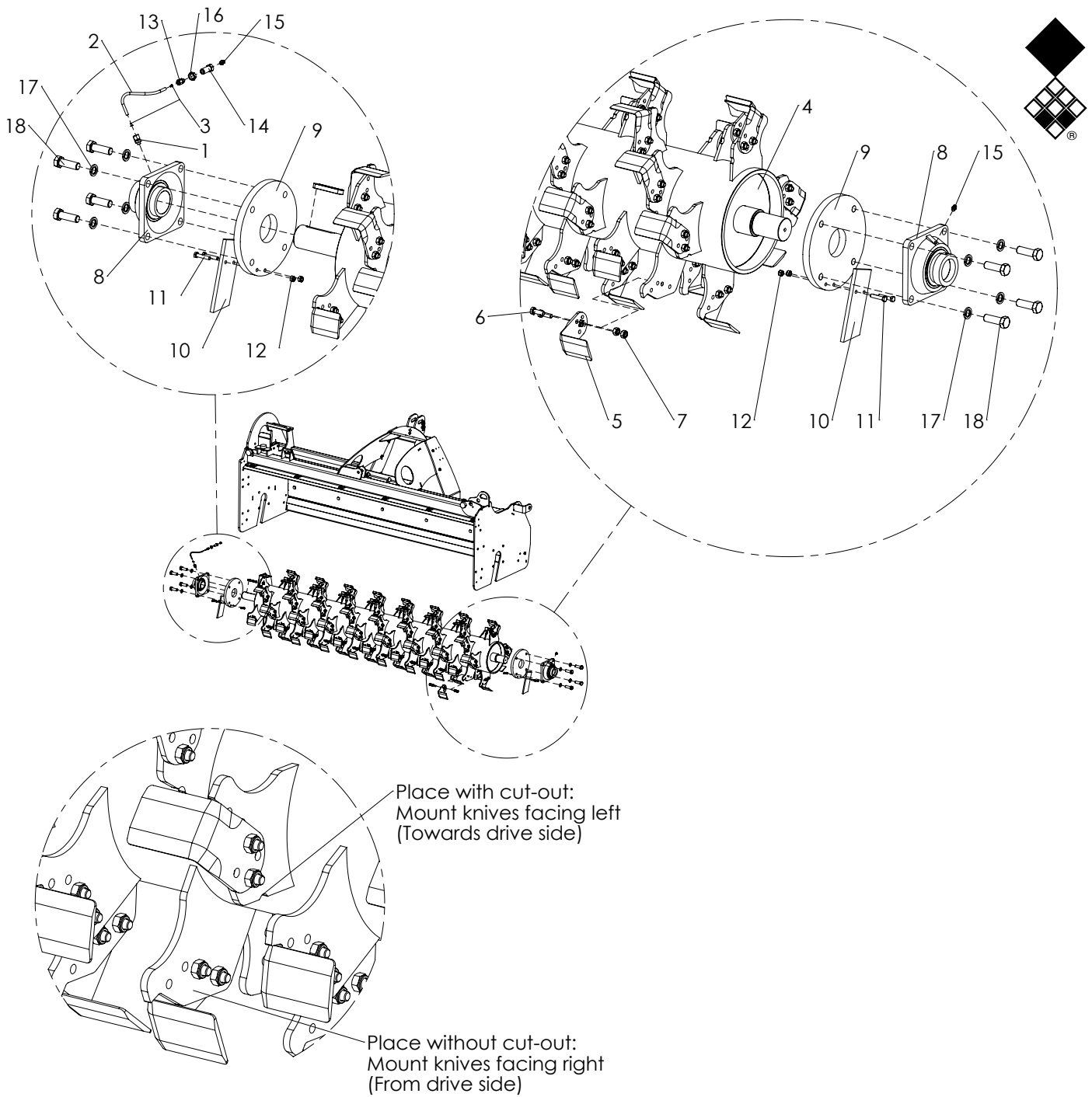
ITEM	PART NUMBER	DESCRIPTION	REMARKS	QUA
1	468.103.800	Gearbox plate		1
2	622.250.408	Gearbox Comer T-269B 1:1,93		1
3	599.021.070	PTO shaft cover		1
4	629.275.240	PTO Cover 4xØ10 PD105		1
5	816.160.350	Bolt M16 x 35 - DIN 7991		4
6	864.080.030	Washer M8 - ISO 7089		8
7	866.080.020	Spring Washer M8 - DIN 127		8
8	804.080.200	Bolt M8 x 20 - ISO 4017		8
9	537.120.300	Breather 1/2"		1
10	864.160.030	Washer M16 - ISO 7089		4
11	830.160.160	Self Lock Nut M16-ISO 10511 Class 10		4
12	820.160.450	MH Bolt M16 x 45 ISO 8677		4
13	190000271	Inner roll pin		1
14	190000243	Outer roll pin		1
15	180018158	Cross and 4x circlip kit		2
16	151018134	Inner tube yoke		1
17	151018133	Outer tube yoke		1
18	616.633.000	T-80 series Outer tube		1
19	616.543.000	T-80 series Inner tube		1
20	141028423	Complete collar yoke		1
21	145285011	Overrun clutch T80		1



ITEM	PART NUMBER	DESCRIPTION	REMARKS	QUA
1	864.160.030	Washer M16 - ISO 7089		4
2	830.160.160	Self Lock Nut M16-ISO 10511 Class 10		4
3	872.110.400	Circlip D=110 - DIN 472		2
4	884.141.100	Key 14x9x110 - DIN 6885		1
5	713.500.270	Bearing 6310-2RS		2
6	478.133.265	Bearing house drive shaft		1
7	420.604.820	Drive shaft		1
8	830.120.120	Self Lock Nut M12 - ISO 10511 Class 10		2
9	802.120.600	Bolt M12 x 60 - ISO 4014		2
10	864.200.030	Washer M20 - ISO 7089		4
11	826.200.200	Nut M20 - DIN 934		4
12	474.242.150	Eye bolt spanner		2
13	642.021.900	V-Belt XPB 1900		5
14	646.022.505	Pulley SPB 250-5 T3535		1
15	646.022.805	Pulley SPB 280-5 T3535		1
16	648.503.535	Taperlock 3535 - 50mm		1
17	648.603.535	Taperlock 3535 - 60mm		1
18	802.160.650	Bolt M16 x 65 - ISO 4014 - 10.9		2
19	804.160.550	Bolt M16 x 55 - ISO 4017		2
20	406.170.152	Distance bush		2

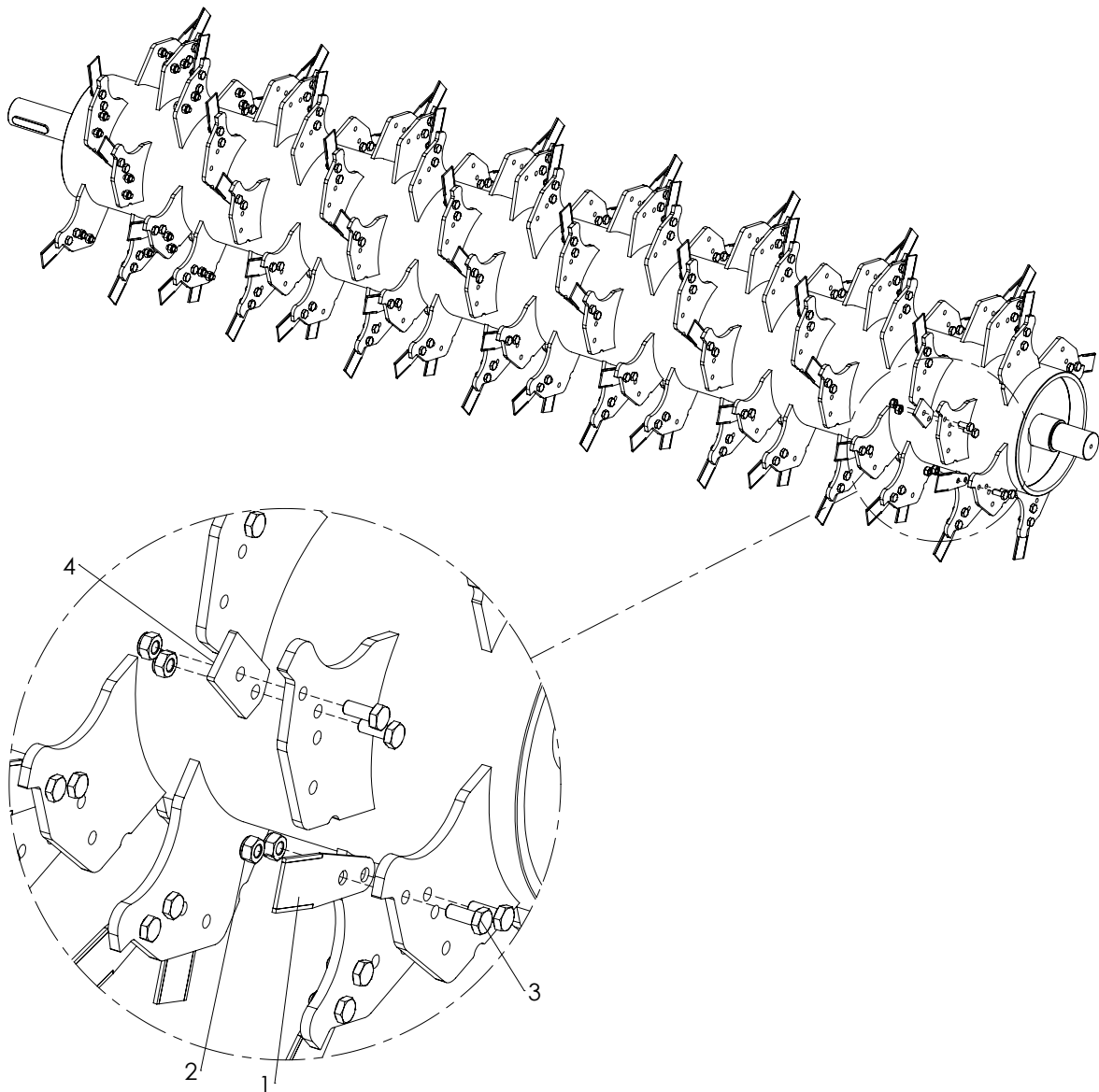


ITEM	PART NUMBER	DESCRIPTION	REMARKS	QUA
1	494.269.093	Frame TS2400		1
2	521.281.230	Pin 28x123		2
3	2490830	Pin d.25		1
4	523.051.000	R-clip Round 5, DIN 11024		1
5	523.100.570	Linch Pin d10		2
6	D208112001	Rubber stop		3
7	830.100.100	Self Lock Nut M10 - ISO 10511		29
8	470.049.244	Guide plate		1
9	864.100.030	Washer M10 - ISO 7089		24
10	820.100.300	MH Bolt M10 x 30 ISO 8677		24
11	802.100.450	Bolt M10 x 45 - ISO 4014 - 10.9		2
12	468.101.390	Spacer		2
13	864.270.040	Washer DIN 125 - A 27		1
14	864.100.031	Large washer M10 - DIN 9021		2



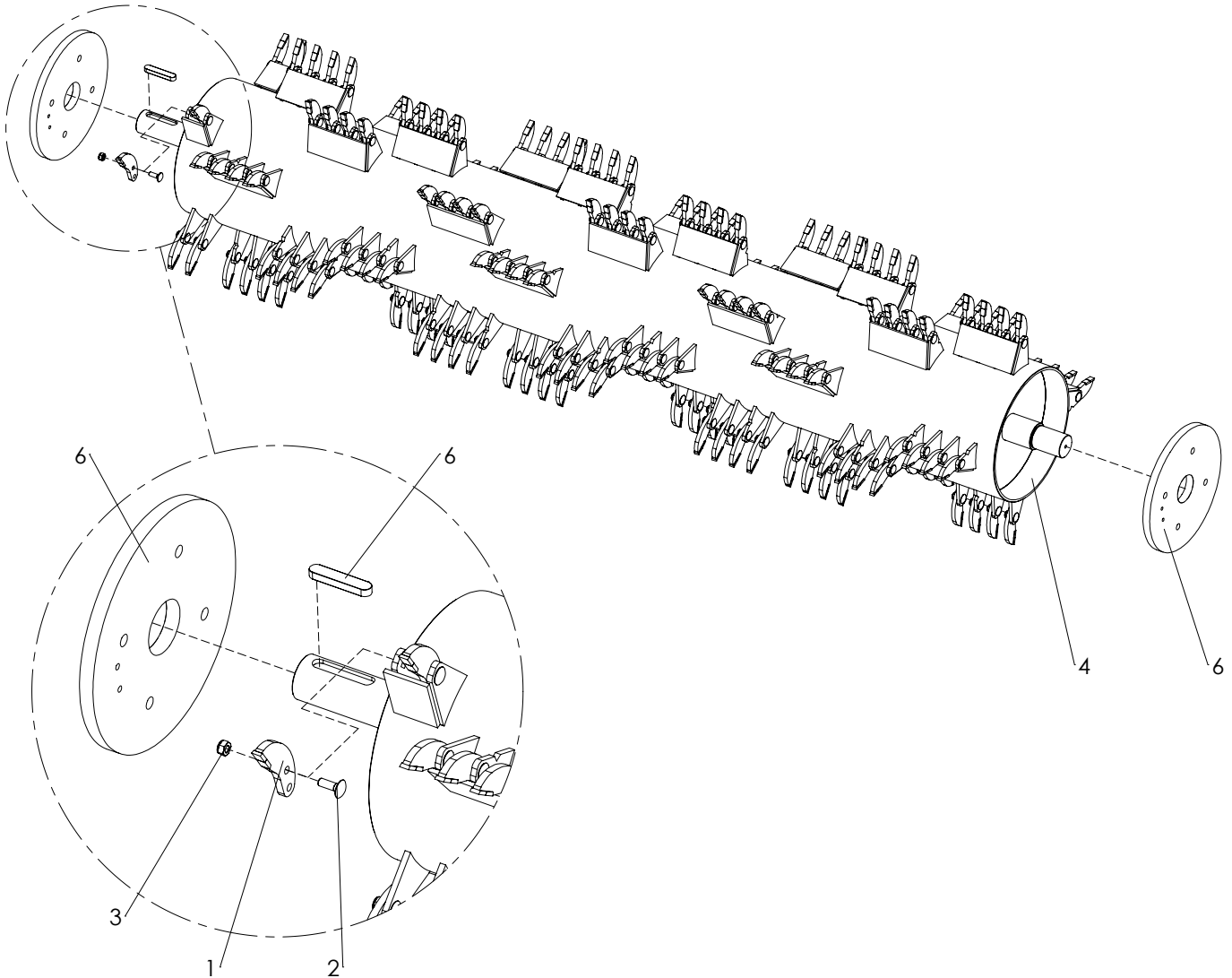
ITEM	PART NUMBER	DESCRIPTION	REMARKS	QUA
1	596.120.242	Grease nipple connector		1
2	596.062.000	Grease Hose L=200		1
3	596.060.060	Connector		2
4	488.556.274	Rotor Turf Stripper 2400		1
5	353.135.116	Fraser Blade 6mm		96
6	804.100.300	Bolt M10 x 30 - ISO 4017		192
7	830.100.100	Self Lock Nut M10 - ISO 10511		192
8	741.600.810	TCJ60-N		2
9	468.152.504	Side cover bearing		2
10	468.101.900	Side strip cover bearing		2
11	802.080.400	Bolt M8 x 40 - ISO 4014		4
12	830.080.080	Self Lock Nut M8 - ISO 10511		4
13	596.120.240	Grease nipple connector		1
14	596.140.270	Bulkhead coupling		1
15	880.080.100	Grease nipple M8 DIN 71412A		2
16	844.140.060	Nut M14x1.5		1
17	866.180.020	Spring Washer M18 - DIN 127		8
18	802.180.550	Bolt M18 x 55 - ISO 4014		8

Optional scarify blades



ITEM	PART NUMBER	DESCRIPTION	REMARKS	QUA
1	353.303.128	Scarify Blade 3mm	Quantity depending on spacing required. Check manual for instructions. Max. quantity 96x	96
2	830.100.100	Self Lock Nut M10 - ISO 10511		192
3	804.100.250	Bolt M10 x 25 - ISO 4017		192
4	353.306.073	Balance Strip	Quantity depending on spacing required. Check manual for instructions.	
	253.240.006	Set of scarify blades (96x)		

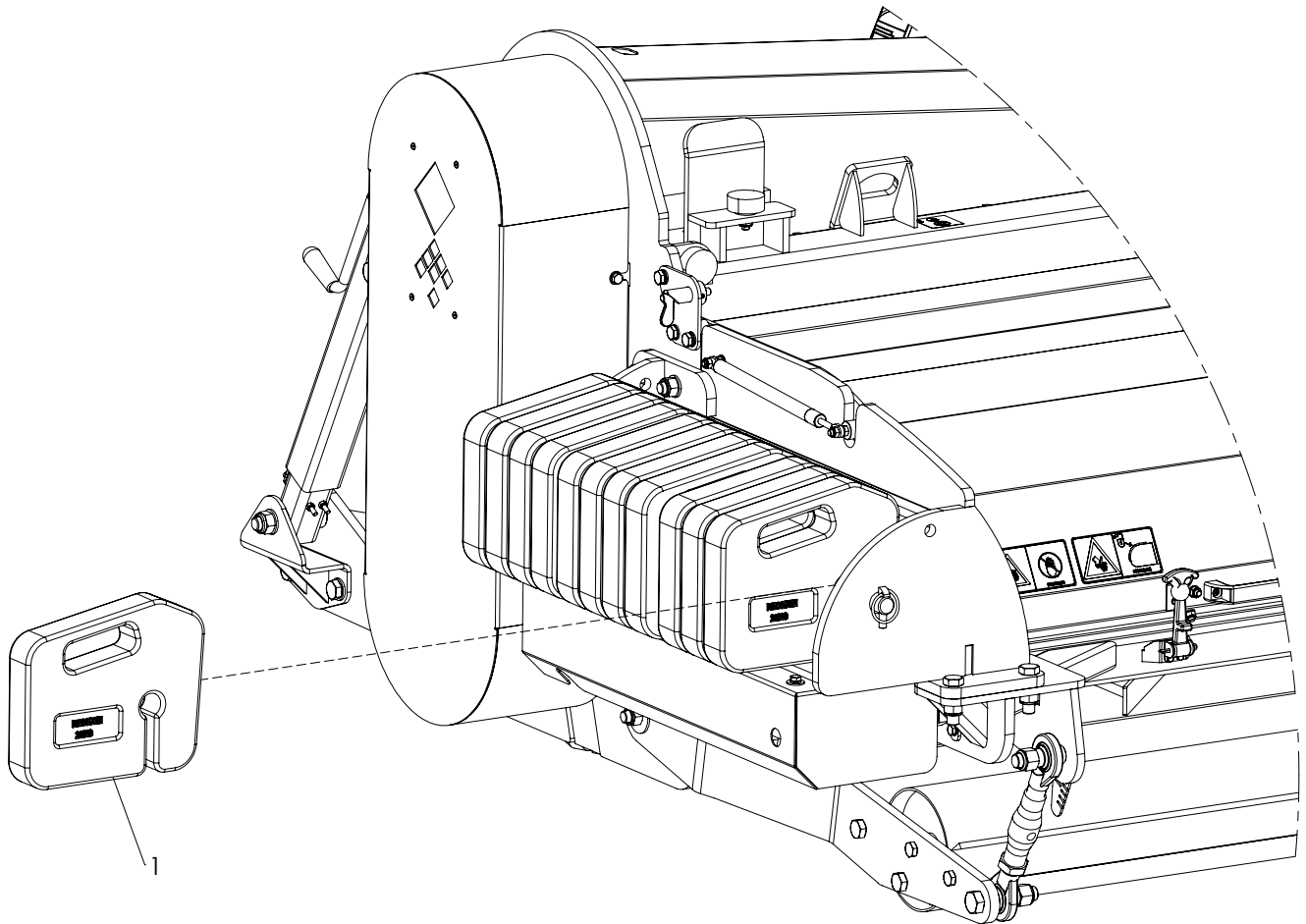
Optional Hybrid rotor



ITEM	PART NUMBER	DESCRIPTION	REMARKS	QUA
1	353.303.110	Hybrid Blade 13mm		184
2	820.100.300	MH Bolt M10 x 30 ISO 8677		184
3	830.100.100	Self Lock Nut M10 - ISO 10511		184
4	488.525.274	Hybrid rotor TS2400		1
5	468.203.360	Side cover bearing		2
6	884.180.900	Key 18x11x90 - DIN 6885		1
	253.240.002	Hybrid rotor TS2400 complete with blades	Item 1-6	

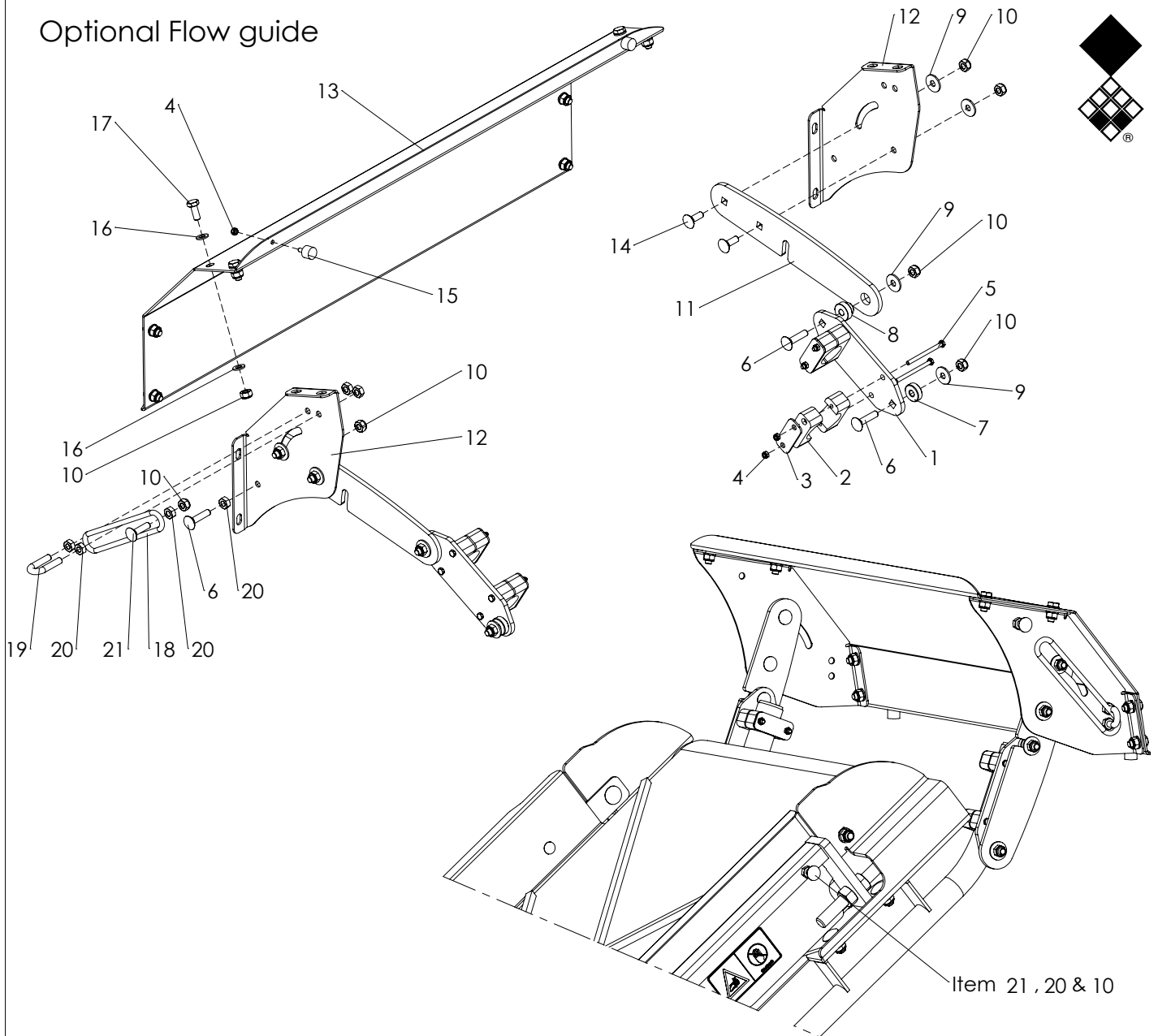


Optional Weight set

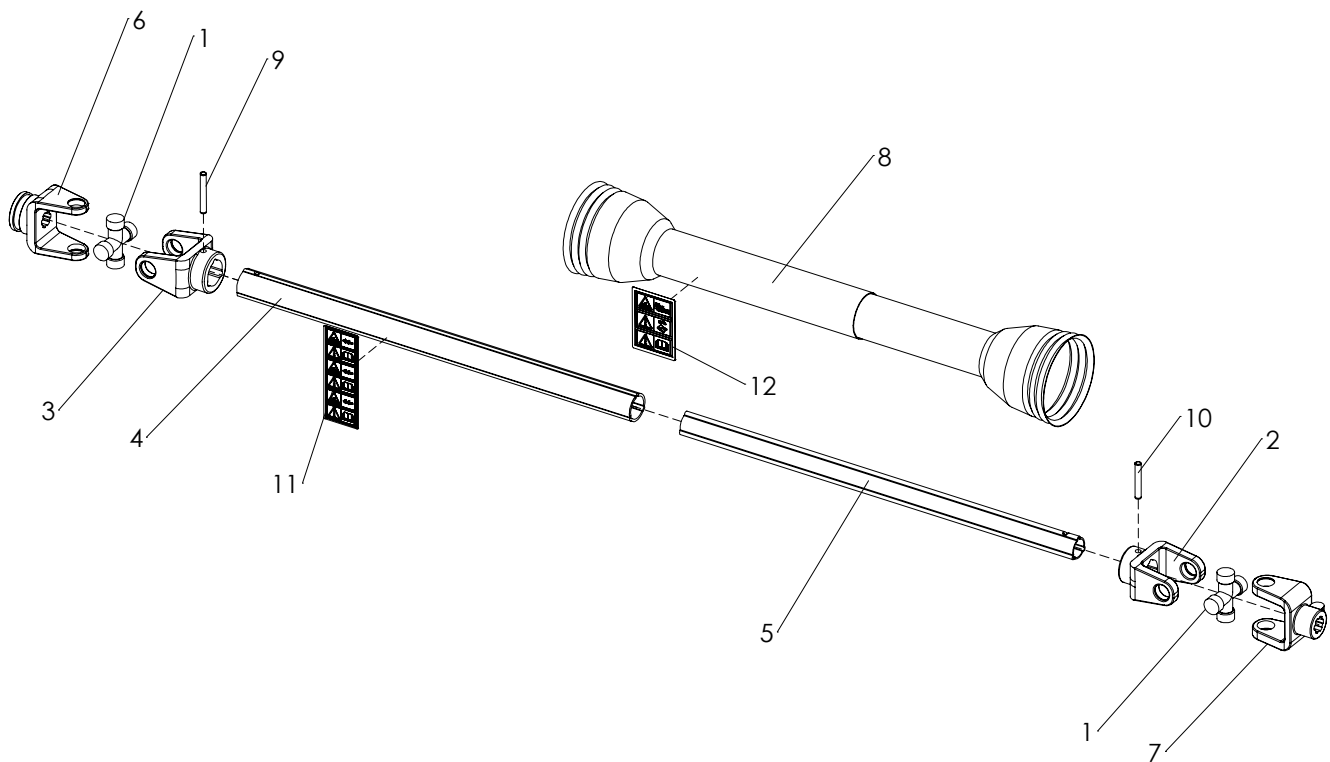


ITEM	PART NUMBER	DESCRIPTION	REMARKS	QUA
1	492.502.800	Weight 20kg		12
	253.240.004	Weight set TS2400		

Optional Flow guide



ITEM	PART NUMBER	DESCRIPTION	REMARKS	QUA
1	468.082.204	Plate		2
2	547.420.300	Pipe clamp single Ø42 (1 1/4") Gr5		4
3	549.300.700	Deck plate Gr5		4
4	830.060.060	Self Lock Nut M6 - ISO 10511		10
5	802.060.800	Bolt M6 x 80 - ISO 4014		8
6	820.100.450	MH Bolt M10 x 45 ISO 8677		5
7	408.100.102	Distance bush Ø30/M10 L=10		2
8	404.100.190	Bush		2
9	864.100.031	Large washer M10 - DIN 9021		8
10	830.100.100	Self Lock Nut M10 - ISO 10511		18
11	468.083.804	Plate		2
12	468.033.330	Bracket		2
13	456.103.051	Cover plate		1
14	820.100.300	MH Bolt M10 x 30 ISO 8677		4
15	572.201.500	Vibration damper		2
16	864.100.030	Washer M10 - ISO 7089		16
17	804.100.250	Bolt M10 x 25 - ISO 4017		8
18	446.082.300	Rubber band 230x8		1
19	416.101.200	Wire rope grip		1
20	826.100.100	Nut M10 - DIN 934		6
21	820.100.400	MH Bolt M10 x 40 ISO 8677		1
	253.240.000	Flow guide		



ITEM	PART NUMBER	DESCRIPTION	REMARKS	QUA
1	180018004	Cross and 4x circlip kit		2
2	151018134	Inner tube yoke		1
3	151018133	Outer tube yoke		1
4	1521981470700	T-series Outer tube		1
5	153190014	T-series Inner tube		1
6	141028423	Complete collar yoke		1
7	141028001	Complete Yoke 1 3/8"Z6		1
8	1422860777830	Complete shield T80		1
9	190000243	Roll pin for outer tube		1
10	190000271	Roll pin inner tube		1
11	190000358	DECAL - PTO INNER		1
12	190000359	DECAL - PTO OUTSIDE		1
	613.806.102	PTO Complete		