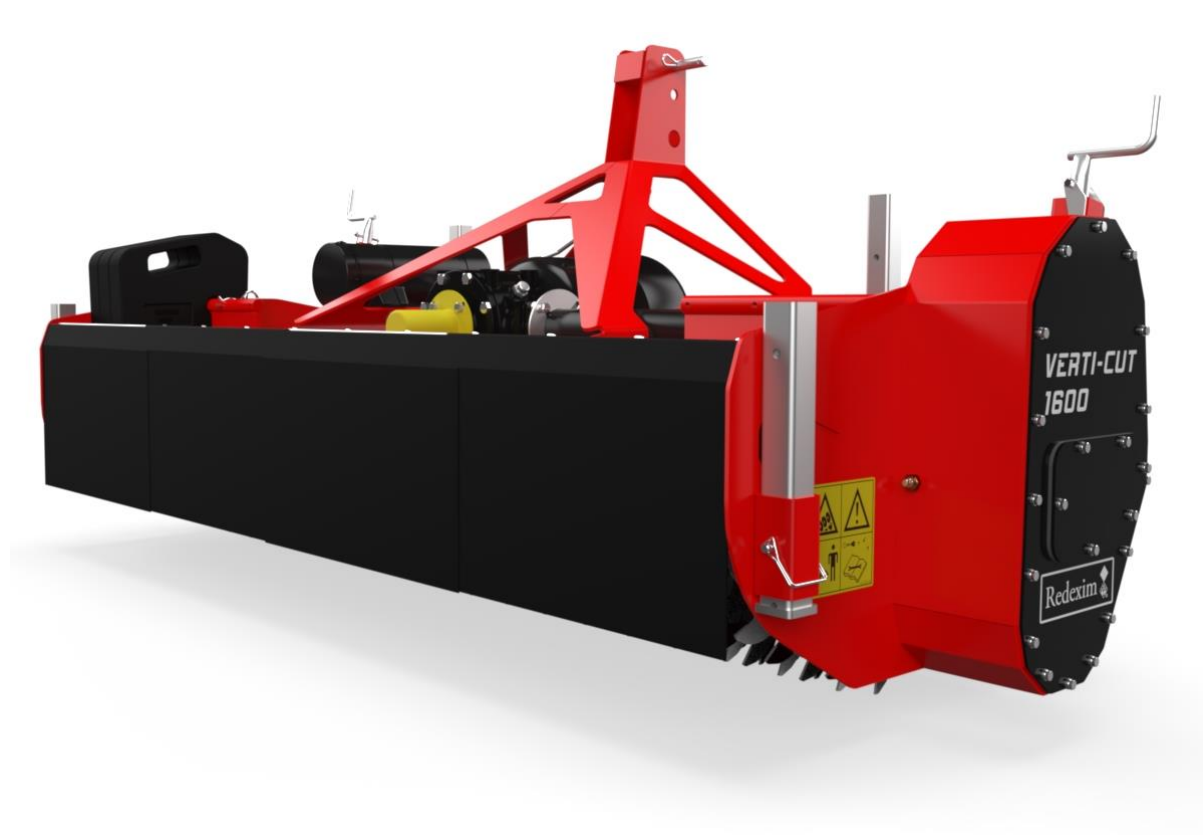


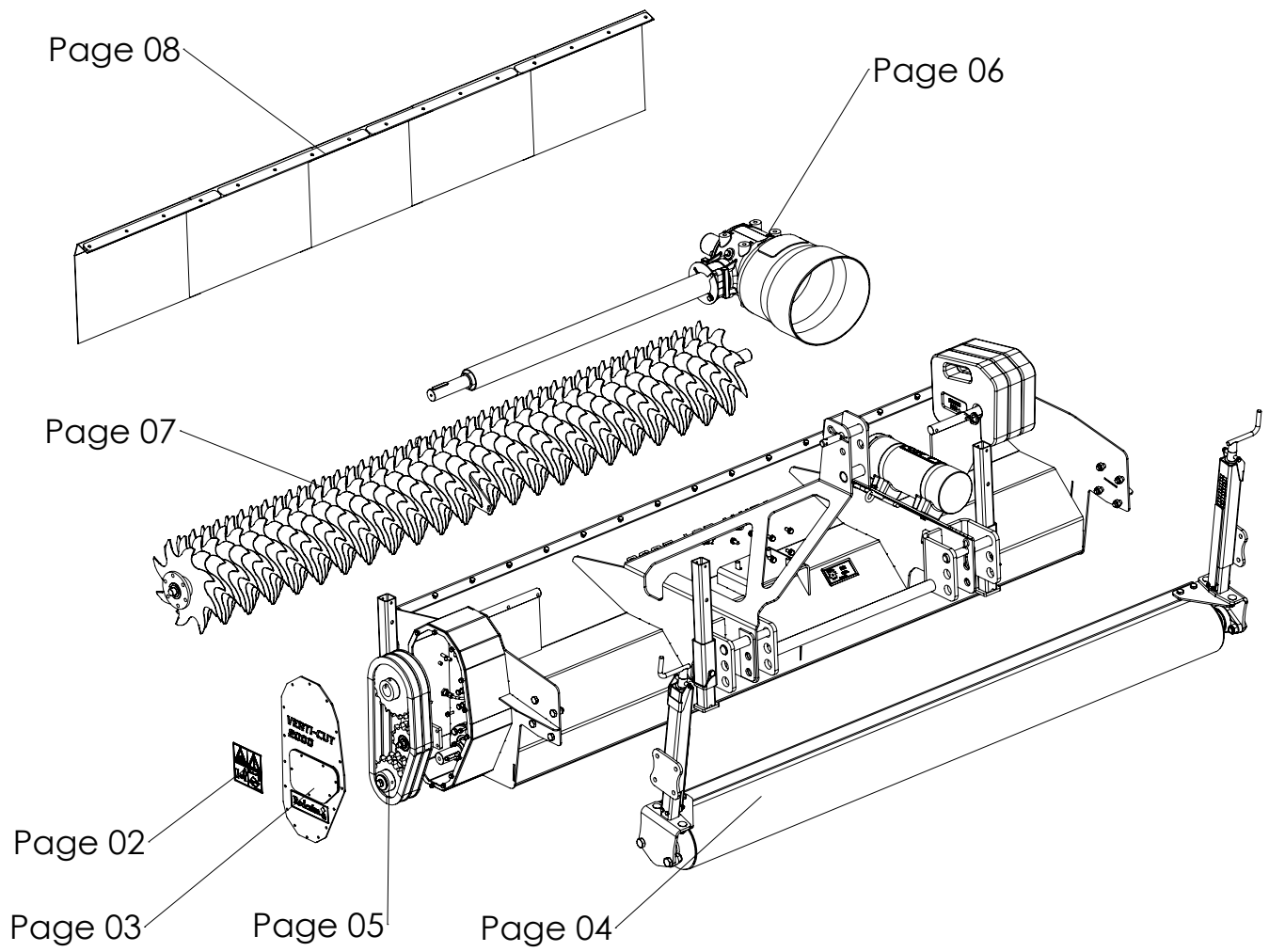
VERTI-CUT 1600-2000



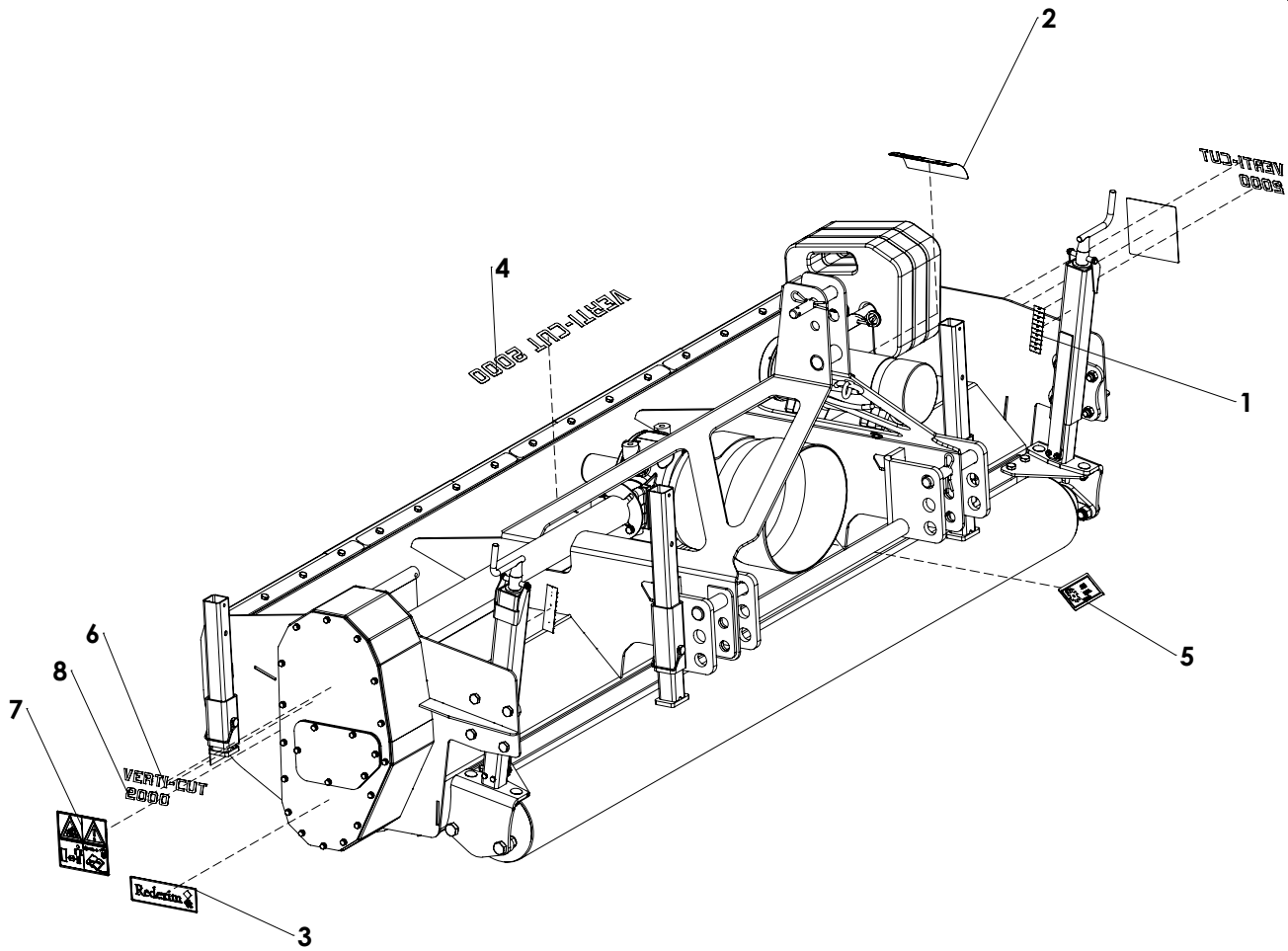
Version: 2135



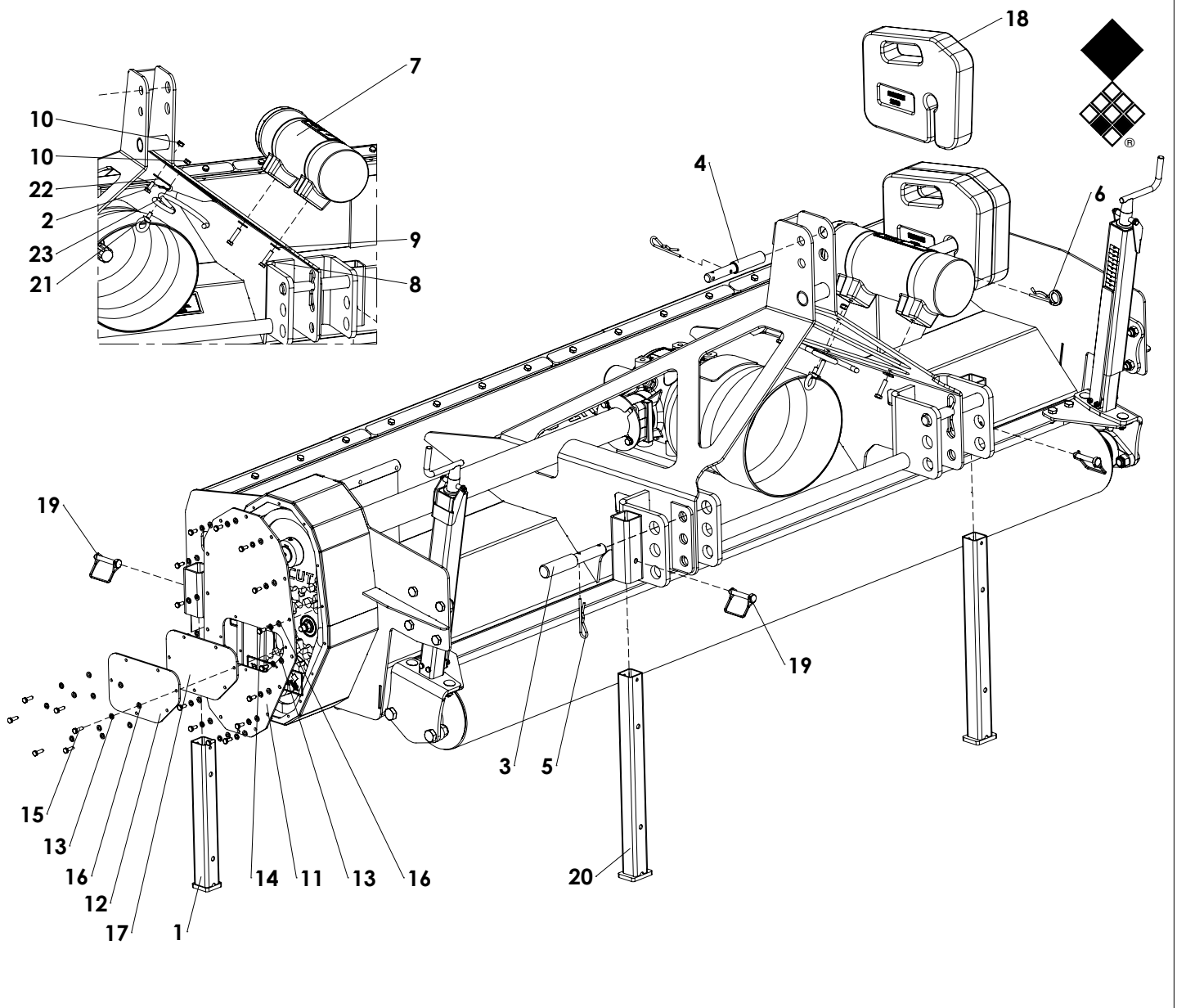
Kwekerijweg 8 | 3709JA | Zeist | The Netherlands |
T: +31 (0)306 933 227
E: redexim@redexim.com
W: www.redexim.com



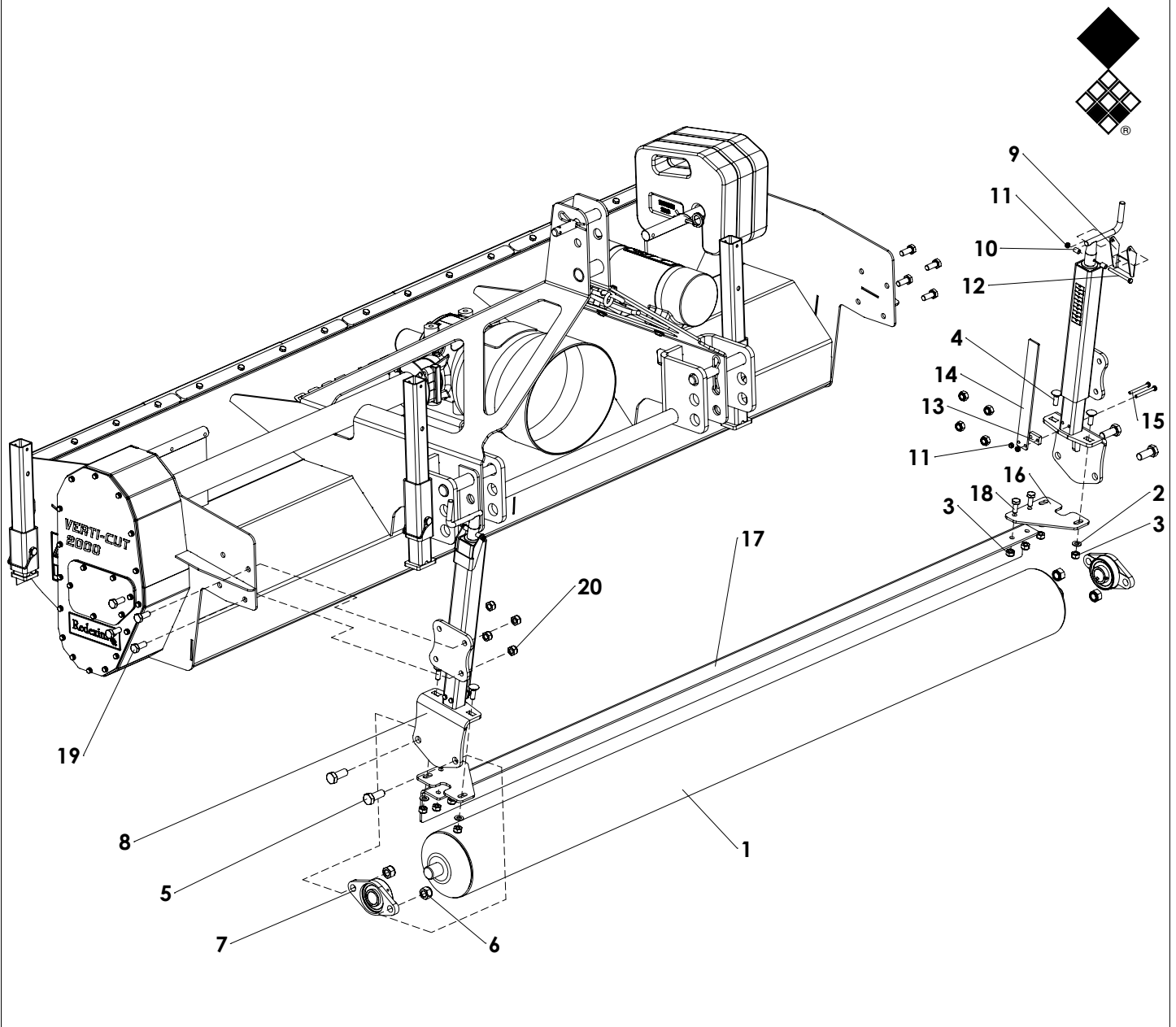
Page P1: PTO



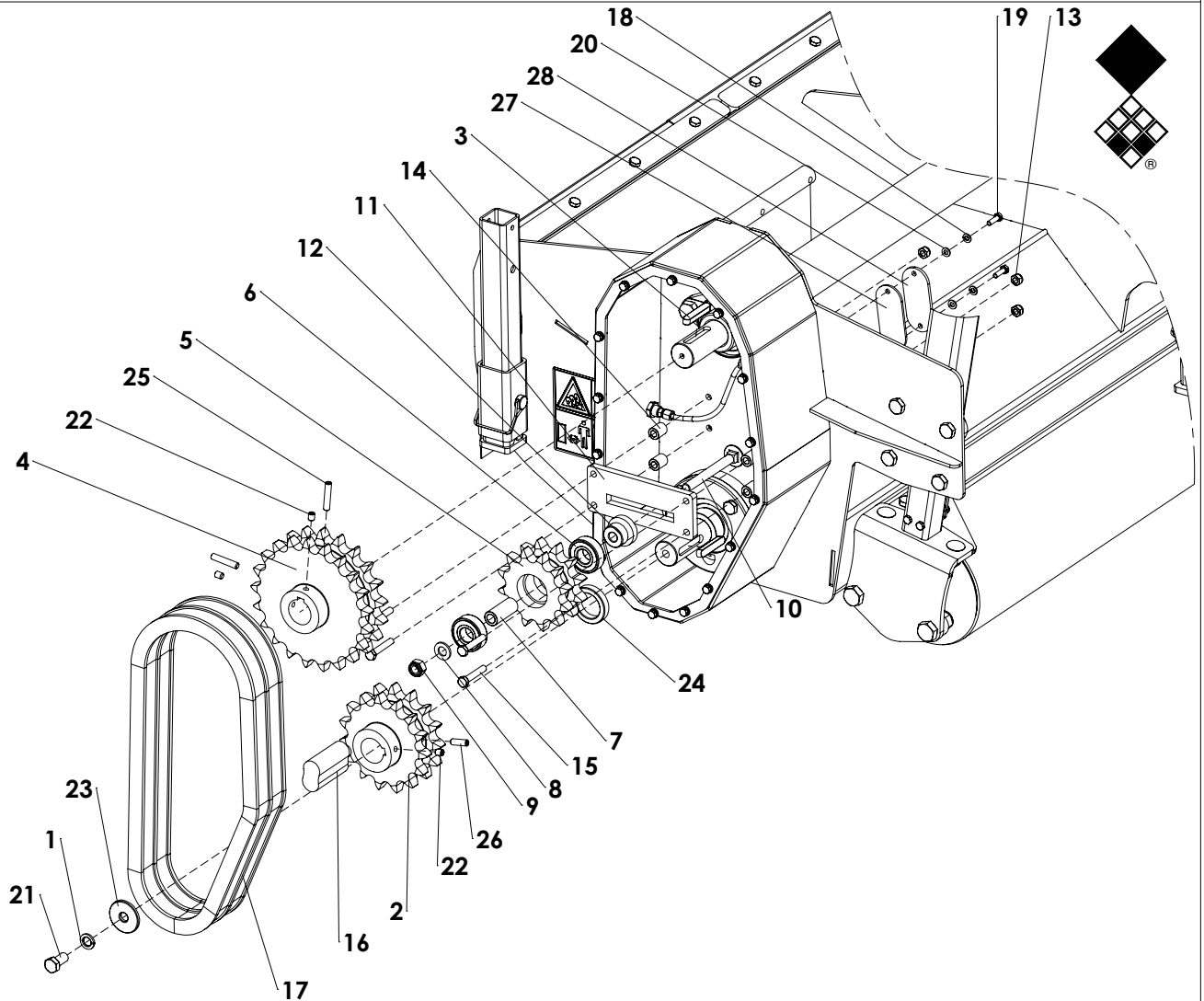
ITEM	PART NUMBER	DESCRIPTION	REMARKS	QUA VC1600	QUA VC2000
1	900.260.414	Decal Ruler		2	2
2	900.280.402	Safety decall manual		1	1
3	900.260.401	Logo Label		1	1
4	944.260.412	Decall Verti-cut 2000		0	1
	944.260.418	Decall Verti-cut 1600		1	0
5	900.260.424	PTO Label 540 RPM		1	1
6	944.260.414	Decall Verti-cut		2	2
7	921.280.402	Safety decall VS		2	2
8	944.260.416	Decall 2000		0	2
	944.260.420	Decall 1600		2	0



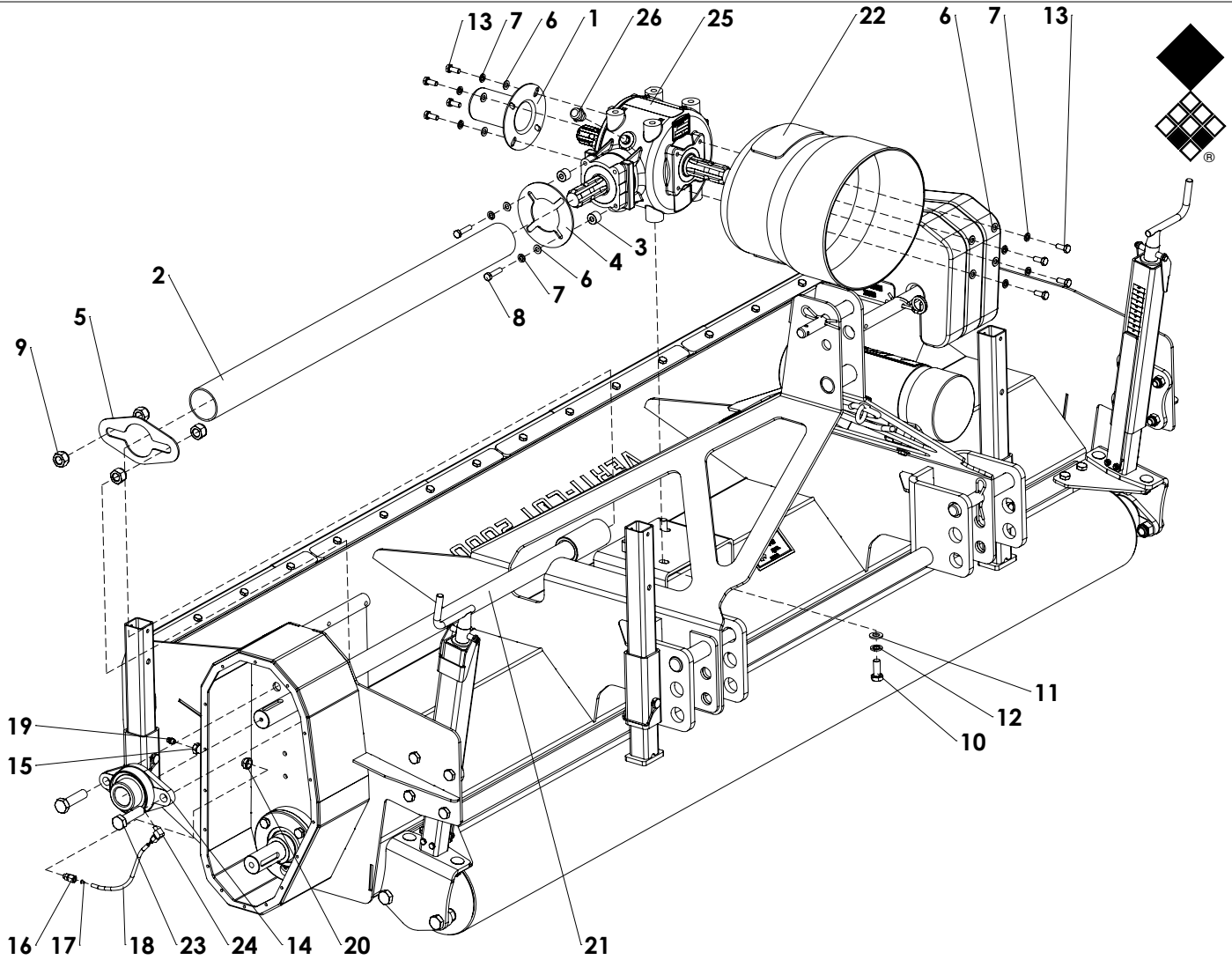
ITEM	PART NUMBER	DESCRIPTION	REMARKS	QUA VC1600	QUA VC2000
1	460.401.840	Support small		2	2
2	804.080.200	Bolt M8 x 20 - ISO 4017		1	1
3	521.221.600	3-point pin		2	2
4	521.191.600	Top link pin OS		1	1
5	523.040.700	R-Clip D=4		3	3
6	523.051.000	R-clip Round 5, DIN 11024		1	1
7	444.803.100	Toolbox Complete		1	1
8	804.080.350	Bolt M8 x 35 - ISO 4017		2	2
9	864.080.024	Large washer M8 - DIN 9021		2	2
10	830.080.080	Self Lock Nut M8 - ISO 10511		2	2
11	468.045.070	Side gearbox plate		1	1
12	468.042.054	Small gearbox plate		1	1
13	866.060.020	Spring Washer M6 - DIN 127		22	22
14	804.060.160	Bolt M6 x 16 - ISO 4017		16	16
15	804.060.200	Bolt M6 x 20 - ISO 4017		6	6
16	864.060.030	Washer M6 - ISO 7089		22	22
17	446.042.050	Small gearbox rubber		1	1
18	492.502.800	Weight 20kg		3	3
19	523.100.500	Square tube circlip		4	4
20	460.401.830	Support		2	2
21	822.080.362	Lifting Eye Bolt M8 - DIN 580		1	1
22	464.020.820	Lock strip		1	1
23	472.104.800	PTO Hook		1	1



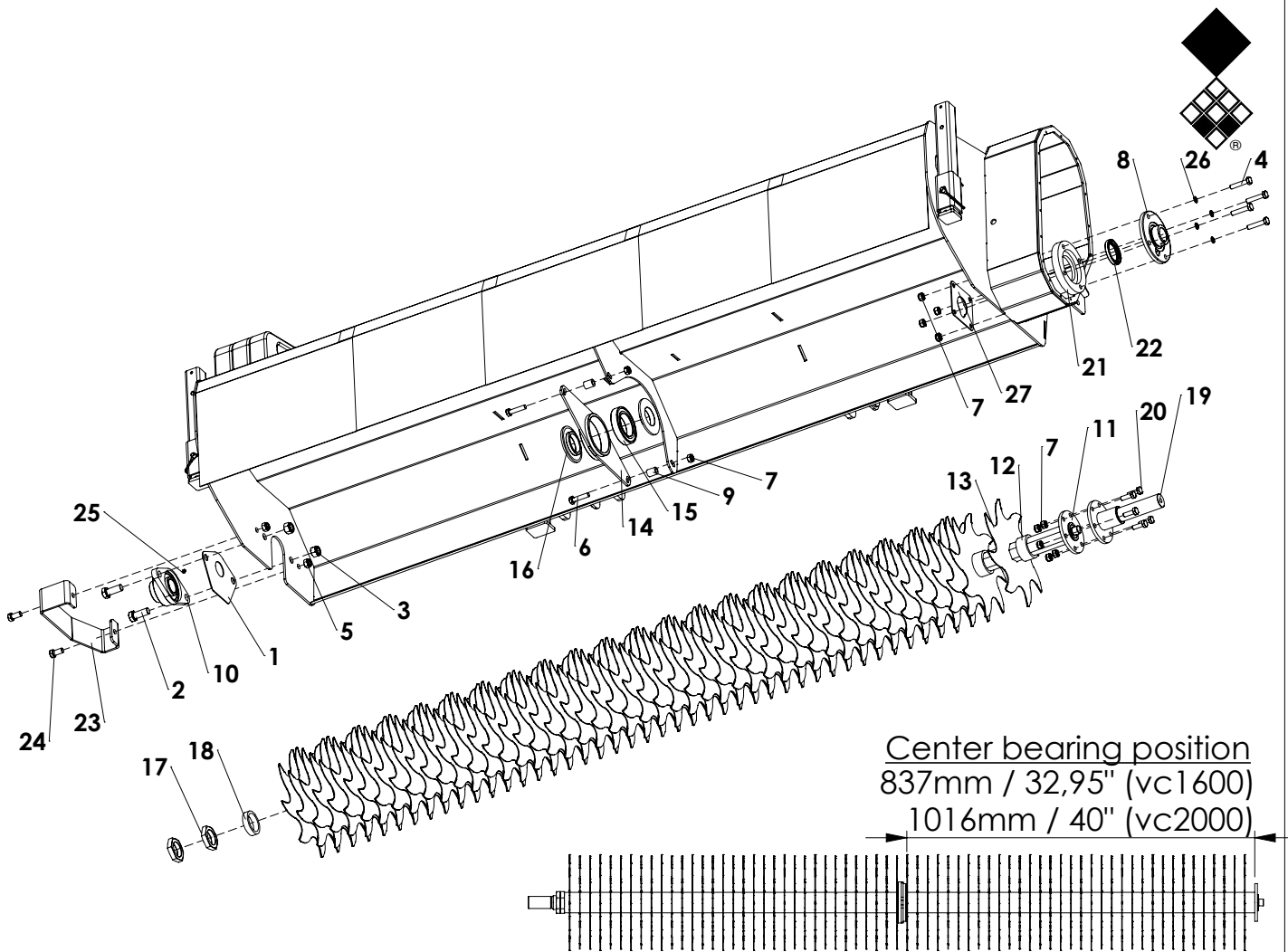
ITEM	PART NUMBER	DESCRIPTION	REMARKS	QUA VC1600	QUA VC2000
1	488.140.209	Front roller Ø159 L=2090		0	1
	488.159.173	Front roller Ø159 L=1730		1	0
2	864.100.030	Washer M10 - ISO 7089		4	4
3	830.100.100	Self Lock Nut M10 - ISO 10511		8	8
4	820.100.300	MH Bolt M10 x 30 ISO 8677		4	4
5	804.160.402	Bolt M16 x 40 - ISO 4017 Class 10.9		4	4
6	830.160.160	Self Lock Nut M16 10.9 - ISO 10511		4	4
7	742.300.400	Bearing UCFL206		2	2
8	460.505.530	Weld Assy Jack		2	2
9	460.505.450-S05	Lock Plate		2	2
10	460.505.450-S06	Distance Bush		4	4
11	830.060.060	Self Lock Nut M6 - ISO 10511		6	6
12	802.060.650	Bolt M6 x 65 - ISO 4014		2	2
13	464.080.300	Distance Block		2	2
14	464.042.800	Height Indicator Strip, L= 280		2	2
15	802.060.600	Bolt M6 x 60 - ISO 4014		4	4
16	468.051.420	Scraper plate		2	2
17	468.059.192	Scraper		0	1
	468.059.164	Scraper		1	0
18	804.100.250	Bolt M10 x 25 - ISO 4017		4	4
19	804.120.300	Bolt M12 x 30 - ISO 4017		8	8
20	830.120.120	Self Lock Nut M12 - ISO 10511 Class 10.9		8	8



ITEM	PART NUMBER	DESCRIPTION	REMARKS	QUA VC1600	QUA VC2000
1	866.120.020	Spring Washer M12 - DIN 127		1	1
2	636.041.335	Sprocket 1" (16B) 15 teeth		1	1
3	884.100.550	Key 10x8x55 - DIN 6885		2	2
4	636.041.820	Sprocket 1"(16B) 21 Teeth		1	1
5	636.041.100	Duplex 16B-2 Z12 Sprocket		1	1
6	713.200.140	Bearing 6204-C-2HRS		2	2
7	402.120.480	Bush		1	1
8	864.120.030	Washer M12 - ISO 7089		1	1
9	830.120.120	Self Lock Nut M12 - ISO 10511 Class 10.9		1	1
10	820.121.100	MH Bolt M12 x 110 ISO 8677		1	1
11	464.101.650	Plate		1	1
12	406.120.282	Spacer		1	1
13	830.080.080	Self Lock Nut M8 - ISO 10511		4	4
14	406.080.202	Spacer		4	4
15	804.080.450	Bolt M8 x 45 - ISO 4017		4	4
16	638.040.252	Chain connector 1" 16B Duplex		1	1
17	632.041.067	Chain duplex Din 8187 16B-2 42 shackles		1	1
18	866.060.020	Spring Washer M6 - DIN 127		2	2
19	804.060.200	Bolt M6 x 20 - ISO 4017		2	2
20	864.060.030	Washer M6 - ISO 7089		2	2
21	804.120.250	Bolt M12 x 25 - ISO 4017		1	1
22	818.080.100	Set screw M8 x 10 - DIN 913		3	3
23	402.120.050	Distance bush Ø45/Ø12.5 L=5		1	1
24	404.350.110	Spacer		1	1
25	818.080.400	Set screw M8 x 40 - DIN 913		2	2
26	818.080.350	Set screw M8x25 - DIN 913		1	1
27	446.030.900	Rubber seal		1	1
28	464.040.906	Chain coupling plate		1	1

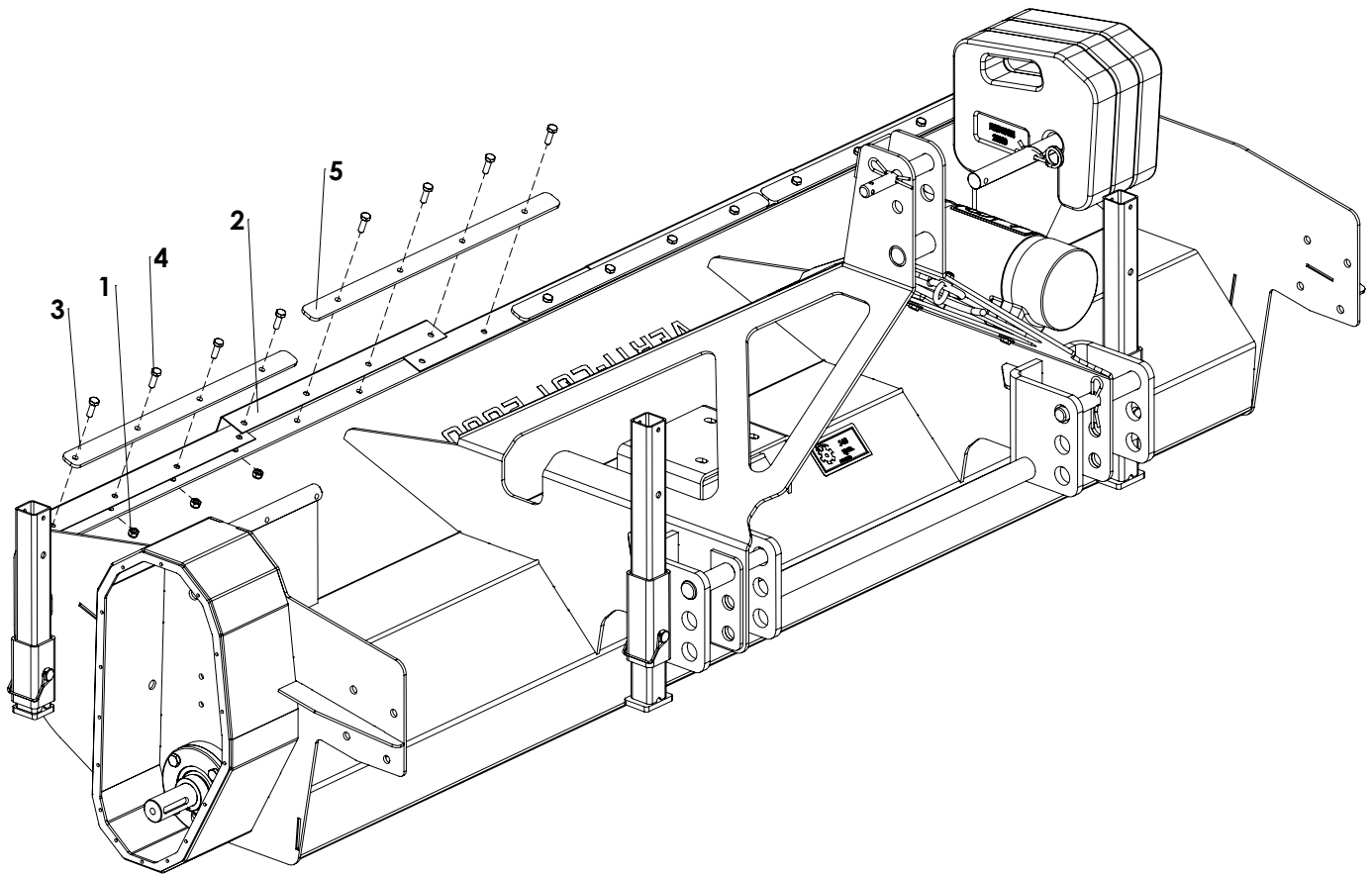


ITEM	PART NUMBER	DESCRIPTION	REMARKS	QUA VC1600	QUA VC2000
1	599.021.070	PTO shaft cover		1	1
2	444.030.630	Protection tube		0	1
	444.030.632	Protection tube		1	0
3	402.080.150	Distance bush		2	2
4	468.031.206	Cover holder		1	1
5	468.031.804	Pipe holder		1	1
6	864.080.030	Washer M8 - ISO 7089		10	10
7	866.080.020	Spring Washer M8 - DIN 127		10	10
8	802.080.350	Bolt M8 x 35 - ISO 4014		2	2
9	830.160.160	Self Lock Nut M16 10.9 - ISO 10511		4	4
10	804.120.300	Bolt M12 x 30 - ISO 4017		4	4
11	864.120.030	Washer M12 - ISO 7089		4	4
12	866.120.020	Spring Washer M12 - DIN 127		4	4
13	804.080.200	Bolt M8 x 20 - ISO 4017		8	8
14	742.350.530	Bearing UELFL 207		1	1
15	596.140.270	Bulkhead coupling		1	1
16	596.120.240	Grease nipple connector		1	1
17	596.060.060	Connector		2	2
18	596.061.202	Grease hose L=155mm		1	1
19	880.080.100	Grease nipple M8 DIN 71412A		1	1
20	844.140.060	Nut M14x1.5		1	1
21	420.359.900	Main drive shaft		0	1
	420.358.050	Main drive shaft		1	0
22	629.275.242	PTO Cover 4xØ10 PD95		1	1
23	804.160.600	Bolt M16 x 60 - ISO 4017		2	2
24	549.060.000	Elbow coupling		1	1
25	622.155.241	Comer gearbox T-304A 1.93:1		1	1
26	537.380.270	Comer breather 3/8" BSP		1	1

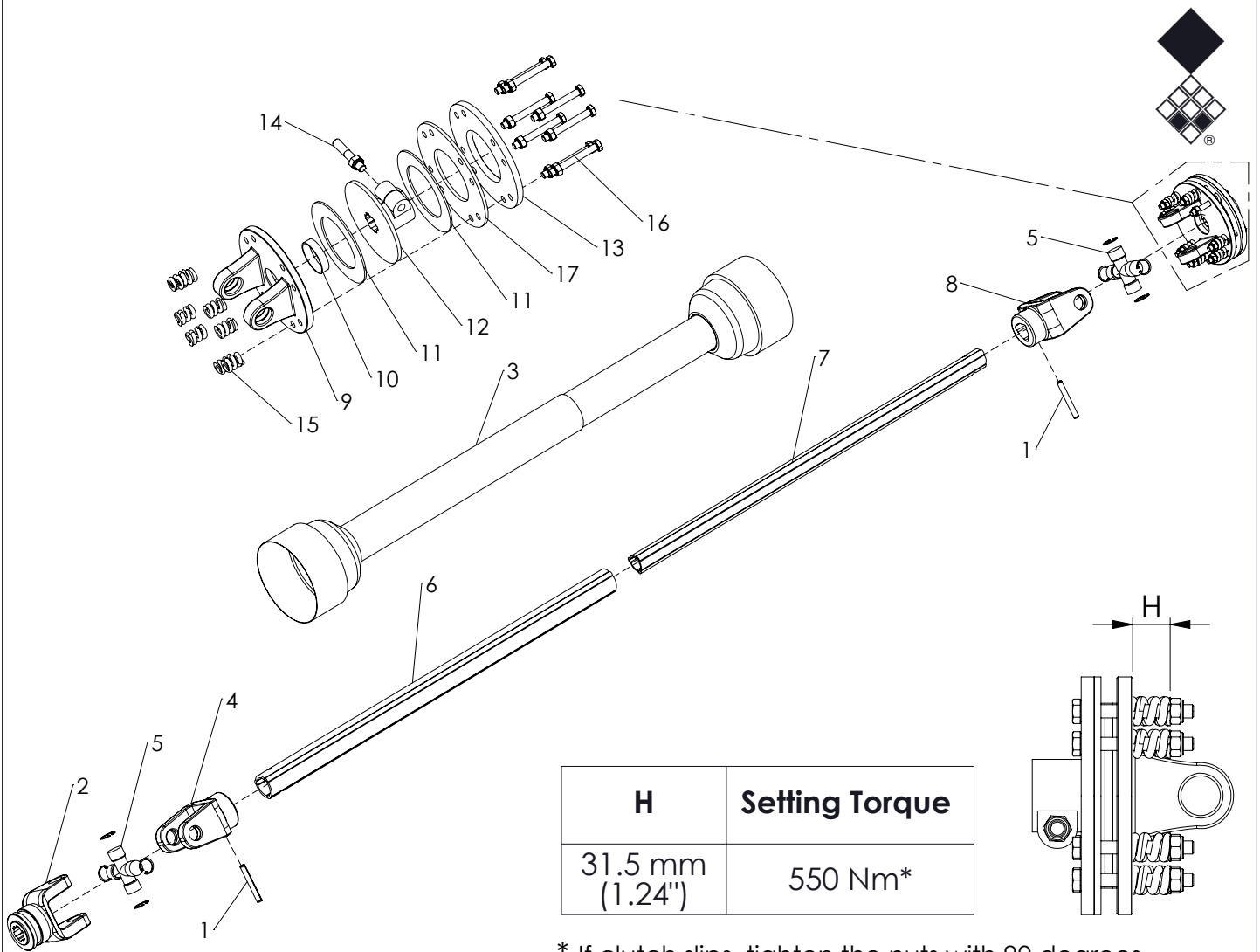


Center bearing position
 837mm / 32,95" (vc1600)
 1016mm / 40" (vc2000)

ITEM	PART NUMBER	DESCRIPTION	REMARKS	QUA VC1600	QUA VC2000
1	468.021.510	Cover Plate		1	1
2	804.160.402	Bolt M16 x 40 - ISO 4017 Class 10.9		2	2
3	830.160.160	Self Lock Nut M16 10.9 - ISO 10511		2	2
4	804.100.500	Bolt M10 x 50 - ISO 4017		4	4
5	830.120.120	Self Lock Nut M12 - ISO 10511 Class 10.9		2	2
6	802.100.450	Bolt M10 x 45 - ISO 4014 - 10.9		2	2
7	830.100.100	Self Lock Nut M10 - ISO 10511		12	12
8	741.350.390	Bearing PME 35-N		1	1
9	406.100.230	Distance bush Ø10/Ø18 L=23		2	2
10	742.350.530	Bearing UELFL 207		1	1
11	422.419.230	weldment shaft Vcut 2000		0	1
	422.419.180	weldment shaft Vcut 1600		1	0
12	406.480.280	Spacer L=28		54	66
13	341.302.280	Scarify blade Ø280 th=2mm		55	67
14	470.243.400	Bearing weldment		1	1
15	713.600.180	Bearing 6012 2RS		1	1
16	404.470.120	Center bearing bush		2	2
17	472.120.602	Cranck shaft nut M40x1.5		2	2
18	406.480.140	Spacer L=14		1	1
19	422.351.810	Gearbox axle		1	1
20	804.100.300	Bolt M10 x 30 - ISO 4017		6	6
21	472.191.350	Concentric ring		1	1
22	762.450.082	Oil seal 45x65x8		1	1
23	464.052.950	Side cover plate		1	1
24	804.120.250	Bolt M12 x 25 - ISO 4017		2	2
25	880.060.100	Grease nipple M6 DIN 71412A		1	1
26	769.100.020	Bonded seal ring		4	4
27	464.021.002	Plate		1	1



ITEM	PART NUMBER	DESCRIPTION	REMARKS	QUA VC1600	QUA VD2000
1	830.080.080	Self Lock Nut M8 - ISO 10511		13	16
2	446.034.100	Rubber flap		0	5
	446.034.680	Rubber flap		4	0
3	464.054.100	back strip		0	2
	464.054.780	back strip		2	0
4	804.080.250	Bolt M8 x 25 - ISO 4017		13	16
5	464.054.102	back strip middle		0	2
	464.057.930	back strip middle		1	0



H	Setting Torque
31.5 mm (1.24")	550 Nm*

* If clutch slips, tighten the nuts with 90 degrees at a time to a maximum of 30.5mm (1.20") = +200Nm

ALWAYS deburr parts when cut
MEASURE correct length of PTO first
MAINTAIN slipclutch every month
NEVER USE PTO over 30 degrees
SLIPCLUTCH always on machine side

ITEM	PART NUMBER	DESCRIPTION	REMARKS	QUA
1	19000018	Outer roll pin		2
2	BEN PT140119	End yoke with quick lock		1
3	BEN PT143249	Safety guard group	Cut to correct length	1
4	BEN PT143666	Outer tube yoke		1
5	BEN PT151242	Universal joint assembled		2
6	BEN PT154926	Tubing cut to size	Cut to correct length	1
7	BEN PT157727	Tubing cut to size	Cut to correct length	1
8	BEN PT158836	Inner tube yoke		1
9	BEN F1B06	Flange yoke		1
10	BEN F060	Bush		1
11	BEN F030/S	Lining ring		2
12	BEN F138	Hub		1
13	BEN F1180	Pressure plate		1
14	BEN 90938	Conic bolt and nut		1
15	BEN F0110	Spring		8
16	BEN F10085	Bolt and nut		8
17	BEN F070	Inner plate		1
	611.601.200	PTO shaft type T-60 tl 1200		
	611.606.100	PTO shaft type T-60 tl 610		