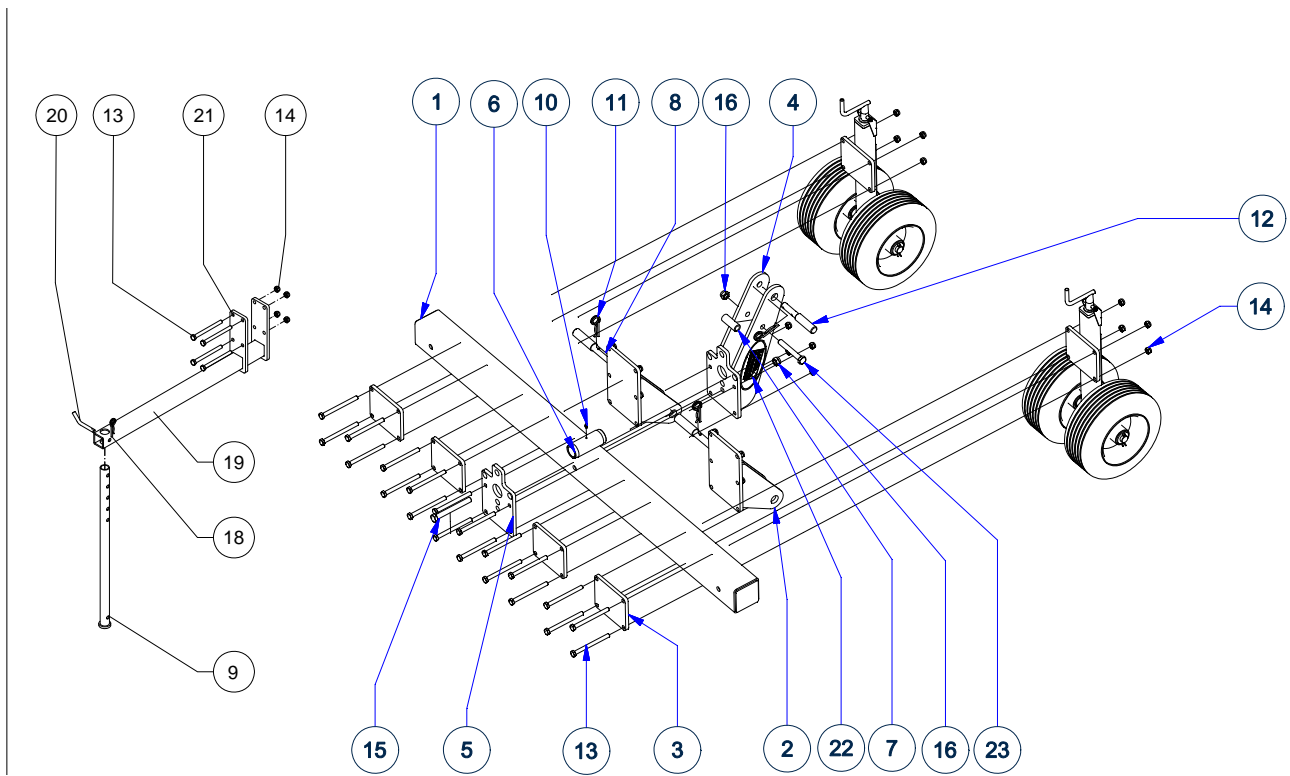


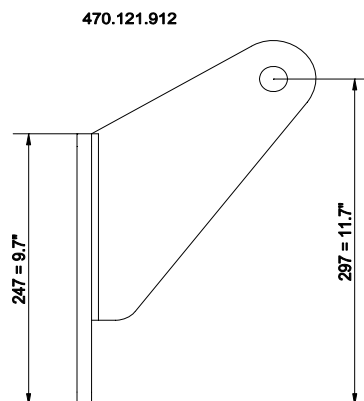
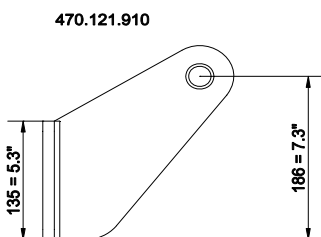
Parts manual

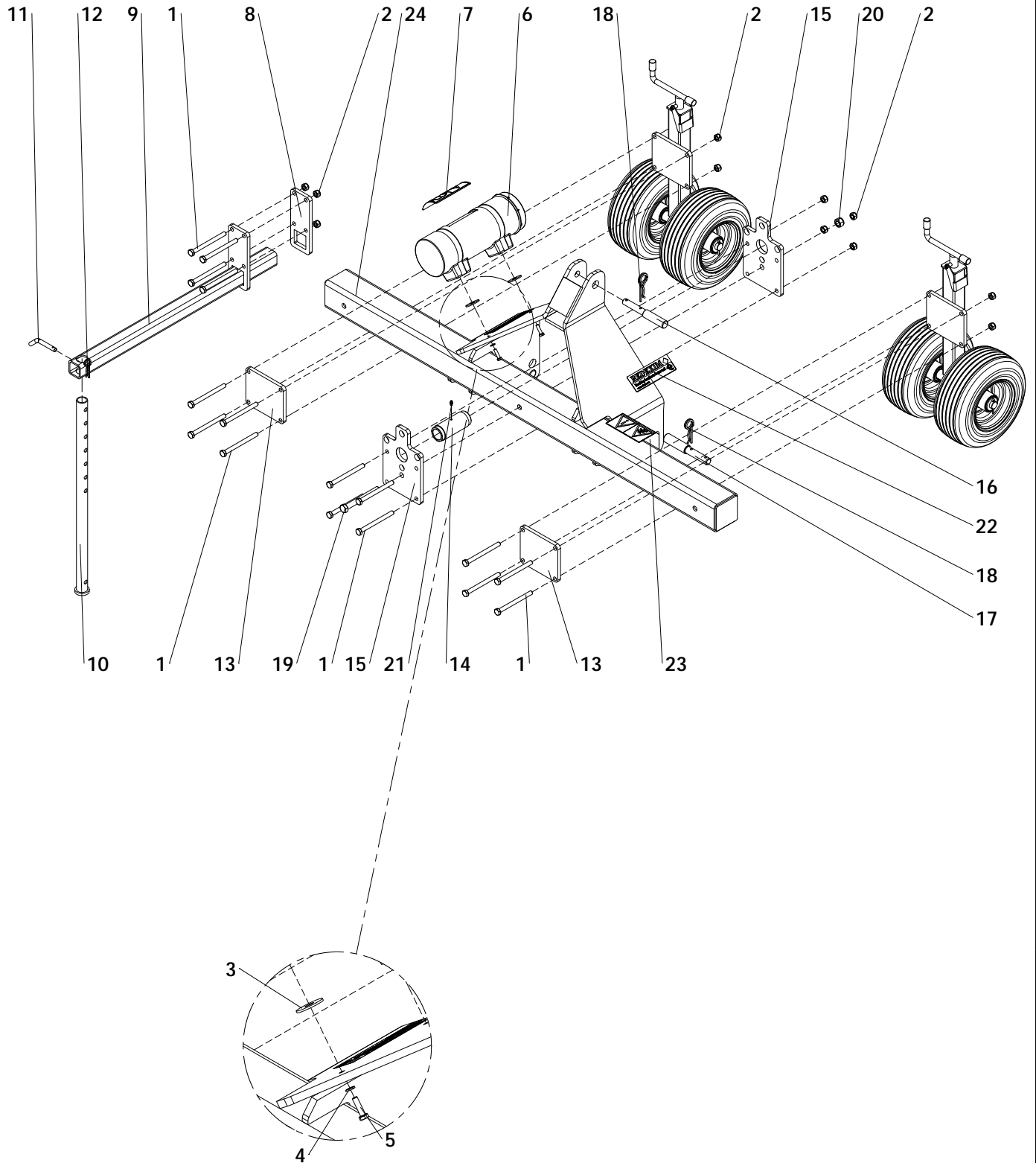
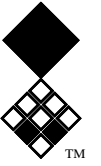




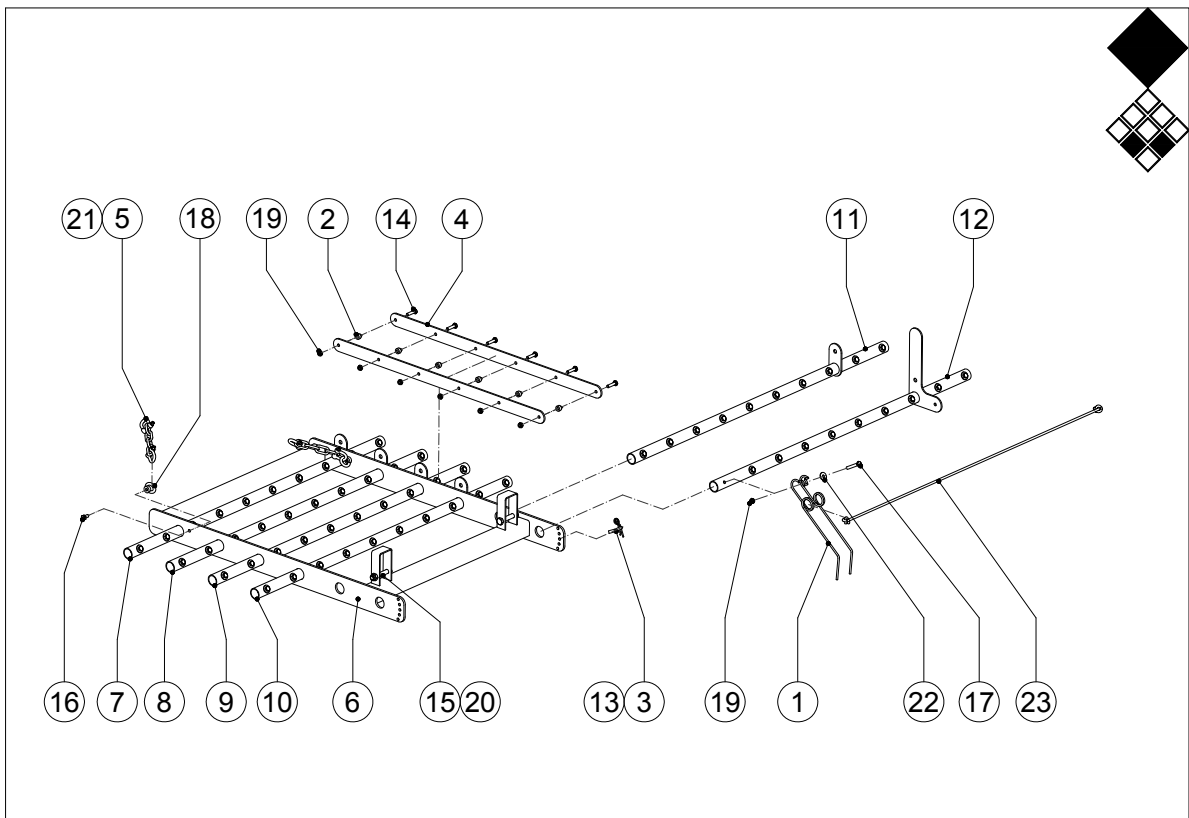
Redexim-Charterhouse Verti-Rake 450 Machine carrier pag 01 code 1726

	PART #	DESCRIPTION	REMARKS	QUA
1	462.109.170	Main beam		1
2	470.121.912	Bottom link assy	Large model	2
	470.121.910	Bottom link assy	Small model	2
3	468.121.350	Mounting plate square 135		4
4	470.124.850	Top link assy		1
5	470.801.850	Pivot lock		1
6	404.501.240	Pivot bush		1
7	476.250.660	Distance bush 3 point		1
8	521.221.600	3 point pin		2
9	460.445.530	Storage stand		1
10	880.060.100	Grease nipple		1
11	523.051.000	R-Clip		3
12	521.191.600	Top link pin		1
13	802.121.400	Bolt M12 x 140		20
14	830.120.120	Self lock nut M12		20
15	802.160.140	Bolt M16 x 140		1
16	830.160.160	Self lock nut M16		2
17	802.161.100	Bolt M16 x 110		1
18	523.030.750	R-Clip D=4		1
19	494.940.182	Storage stand fixed		1
20	424.121.100	Lock Pin		1
21	468.122.450	Plate storage stand		1
22	900.260.403	Logo Label Redexim		1



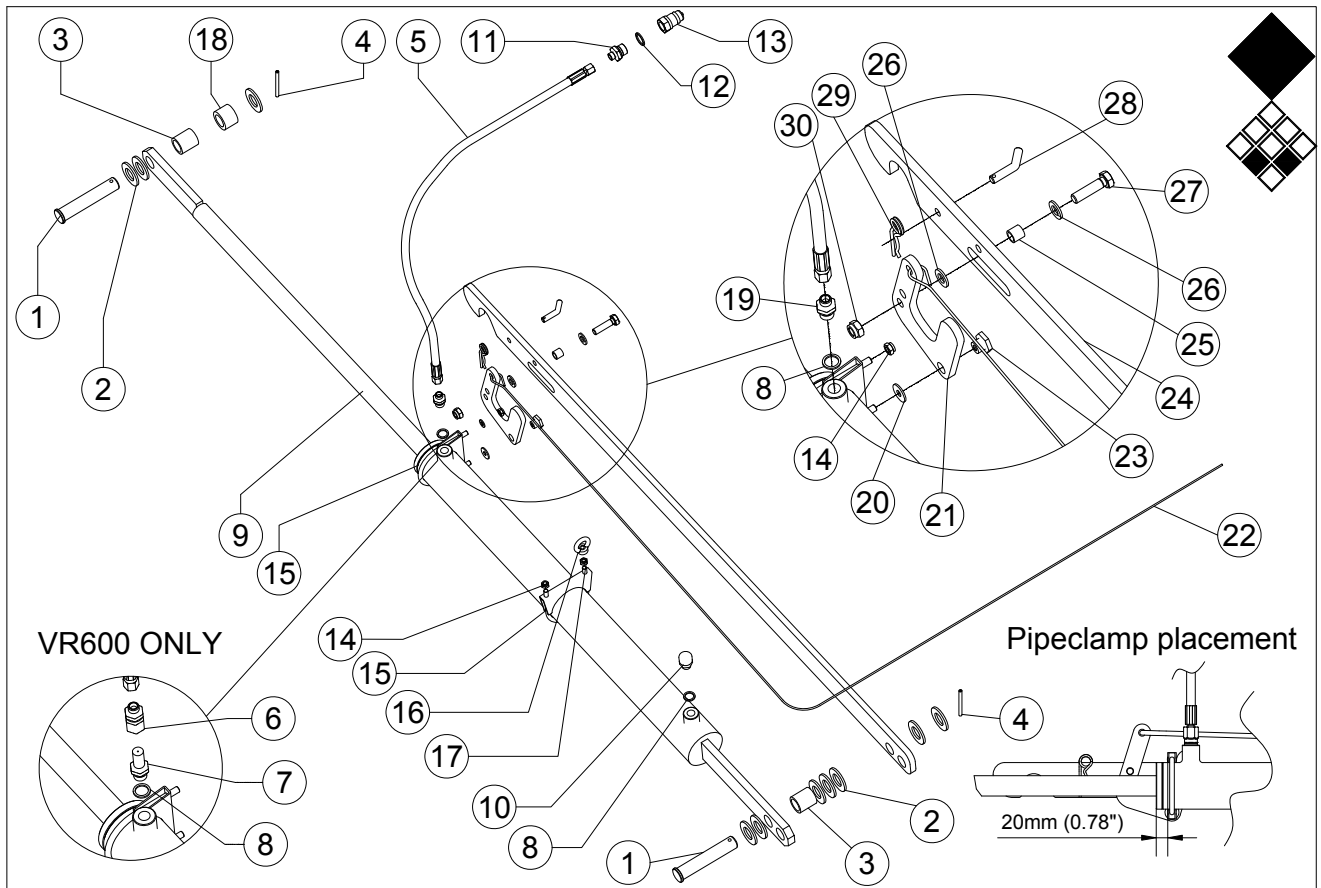


ITEM	PART NUMBER	DESCRIPTION	REMARKS	QUA
1	802.121.400	Bolt M12 x 140 - ISO 4014		16
2	830.120.120	Self Lock Nut M12 - ISO 10511		16
3	864.140.031	Large washer M14 - DIN 9021		2
4	866.080.020	Spring Washer M8 - DIN 127		2
5	804.080.300	Bolt M8 x 30 - ISO 4017		2
6	444.803.100	Toolbox Complete		1
7	900.280.402	Safety decall manual		1
8	468.122.450	Plate storage stand		1
9	494.940.182	Storage stand		1
10	460.445.530	Storage stand		1
11	424.121.100	Lock Pin		1
12	523.030.750	R-Clip Round 3, DIN 11024		1
13	468.121.350	Mounting Plate Square 135		2
14	404.501.240	Pivot bush For Rake Section Main Tube		1
15	468.121.780	Mounting Plate Rake Section Pivots		2
16	521.191.600	Top link pin OS		1
17	521.221.600	3-point pin		2
18	523.051.000	R-clip Round 5, DIN 11024		3
19	802.161.400	Bolt M16 x 140 - ISO 4014		1
20	830.160.160	Self Lock Nut M16 - ISO 10511		1
21	880.060.100	Grease nipple M6 DIN 71412A		1
22	900.260.403	Logo Label		2
23	933.280.402	Safety decall		1
24	494.167.032	Main frame		1



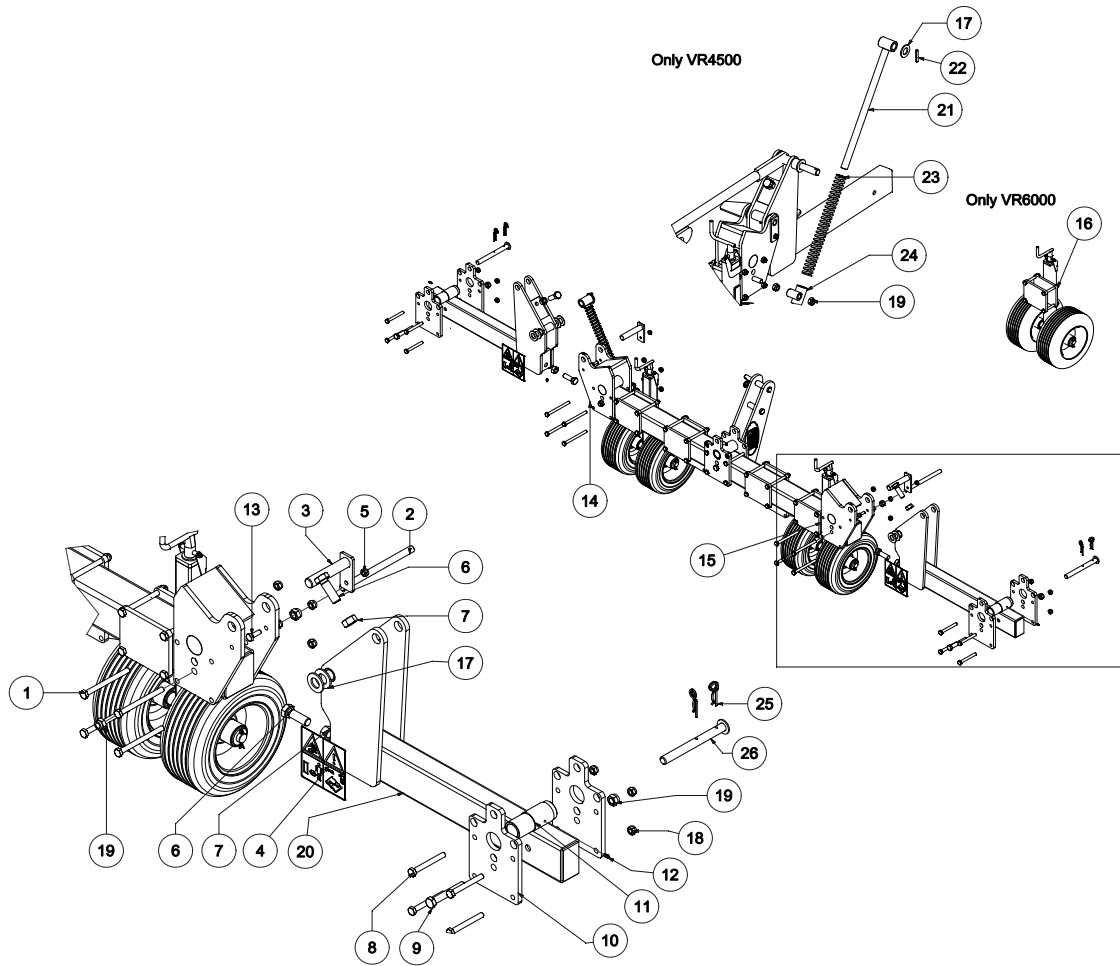
Redexim-Charterhouse Verti-Rake 450 / 600 Rake section pag 03 code 0831

	PART 450 / 600	DESCRIPTION	DESCRIPTION	QUA
1	361.505.390	Tine for Verti-Rake		60
2	404.100.160	Pivot bush		6
3	424.100.590	Lock pin		1
4	464.069.110	Guide strip for angle setting		2
5	482.081.360	Chain		2
6	494.127.091	Rake frame		1
7	494.128.105	Tine support tube 1		1
8	494.128.106	Tine support tube 2		1
9	494.128.107	Tine support tube 3		1
10	494.128.108	Tine support tube 4		1
11	494.128.109	Tine support tube 5		1
12	494.128.270	Tine carrier		1
13	523.030.750	R-Clip		1
14	802.100.400	Bolt M10 x 40		6
15	802.160.900	Bolt M16 x 90		2
16	804.100.200	Bolt M10 x 20		2
17	802.100.650	Bolt M10 x 65		60
18	822.100.360	Eye nut M10		2
19	830.100.100	Self lock nut M10		66
20	830.160.160	Self lock nut M16		2
21	846.100.471	D-Shackle		4
22	864.100.031	Large washer M10		60
23	899.080.150	Rope for spring tines		6
		The 4.5 meter Rake has 3x1.5m sections, so multiply the quantities mentioned above with 3.		
		The 6 meter Rake has 4x1.5m sections, so multiply the quantities mentioned above with 4.		



Redexim-Charterhouse Verti-Rake 450 / 600 pag 07 code 1016

	PART #	DESCRIPTION	REMARKS	QUA
1	418.251.350	Pin	Only VR600	002
	418.252.000	Pin	Only VR450	002
2	864.260.030	Washer M26		012
3	406.260.380	Distance Bush		002
4	878.080.500	Roll pin Ø8x50		002
5	541.151.600	Hydraulic Hose		001
6	544.121.120	Nipple M18 – 12mm Pipe	Only VR600	001
7	543.170.410	Oil Flow Reducer	Only VR600	001
8	874.170.020	Cupper Washer G3/8"		002
9	534.303.750	Cylinder VR		001
10	537.380.360	Breather G3/8"		001
11	544.130.402	Nipple G1/2" – M18		001
12	874.210.020	Cupper Washer G1/2		001
13	545.210.800	Quick Connector Male G1/2"		001
14	830.080.080	Self Lock Nut M8		002
15	547.081.140	Pipe Clamp Ø83		002
16	822.080.360	Eye Nut M8		001
17	826.080.080	Nut M8		001
18	406.260.290	Distance Bush Ø40/Ø26 L=29		001
19	544.170.120	Nipple G3/8" - M18 12mm pipe	Only VR450	001
20	864.080.031	Large Washer M8		001
21	464.101.350	Lock Lever		001
22	899.040.250	Nylon Cord L=2500		001
23	408.080.160	Threaded Hex. Bush		001
24	464.129.151	Lock Strip		001
25	406.120.152	Distance Bush		001
26	864.120.030	Washer M12		002
27	804.120.450	Bolt M12x45		001
28	424.100.590	Lock Pin		001
29	523.030.750	R-Clip D=4		001
30	830.120.120	Self Lock Nut M12		001
	764.350.700	Seal Kit For Cylinder Verti-Rake		001



Redexim-Charterhouse Verti- Rake 450 / 600 pag 08 code 1339

	PART #	DESCRIPTION	REMARKS	QUA
1	802.121.400	Bolt M12 x 140		008
2	802.161.400	Bolt M16 x 140	Only VR600	002
	852.162.300	Threaded Rod M16 L=230	Only VR450	002
3	474.251.300	Lock Pin		002
4	933.280.402	Safety Label		002
5	830.100.100	Self Lock Nut M10		002
6	804.200.600	Bolt M20x60		004
7	830.200.200	Nut M20		004
8	802.121.000	Bolt M12 x 100		008
9	802.161.000	Bolt M16 x 100		002
10	468.121.780	Mounting Plate Rake Section Pivots		004
11	404.501.242	Pivot Bush		002
12	880.060.100	Grease Nipple M6		004
13	804.100.300	Bolt M10x30		002
14	494.032.013	Pivot Bracket VR450	Only VR450	001
	494.032.019	Pivot Bracket Left	Only VR600	001
15	494.032.013	Pivot Bracket VR450	Only VR450	001
	494.032.020	Pivot Bracket Right	Only VR600	001
16		Wheel Assembly	Only VR 600 See Parts Page 02	002
17	864.260.030	Washer M26		009
18	830.120.120	Self Lock Nut M12		016
19	830.160.160	Self Lock Nut M16		006
20	494.136.255	Extension Arm VR 450	Only VR450	002
	494.138.330	Extension Arm VR 600	Only VR600	002
21	474.405.200	Slider Rod	Only VR450	002
22	878.080.500	Roll Pin Ø8x50		002
23	438.403.950	Spring	Only VR450	002
24	478.070.050	Slider Pipe	Only VR450	002
25	523.030.750	R-Clip D=4 Din 11024		004
26	474.202.000	Lock Pin		002