

# Pump Manager 2



## The right data. Right where you need it.

The new Rain Bird® Pump Manager 2 is engineered for the golf course professional looking to simplify pump control, monitoring, archiving and data reporting. This powerful software application gives you full access from your PC with enhanced capabilities when paired with Rain Bird's Central Control System.

Pump Manager 2 provides a direct link to the pump station PLC—so you can access and view pump station status and operations from your desktop at any time. Pump Manager 2 also offers a full range of built-in reporting features to satisfy regulatory requests and provide at-a-glance views. Plus, it works with Rain Bird's Smart Pump™ software to use this data and automatically take appropriate actions.



## Track and manage your pump station without interrupting your workflow.



- Pump Manager 2 keeps you informed of current pump operations while you view other aspects of the central control.



- The dashboard report generator utility shows you what's happening at the pump station and allows you to run a report.



- All pump station data, including pressure, flow, manual operations, alarm conditions, water and power usage, is recorded and securely saved on your PC for future analysis and management.



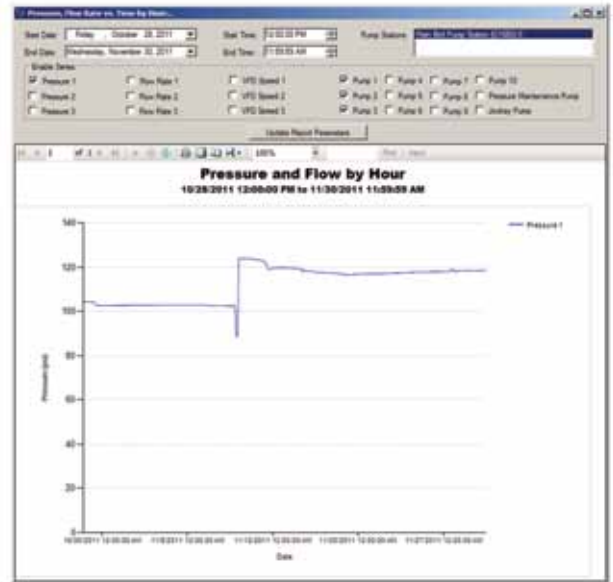
## A wealth of pump data—at your fingertips.



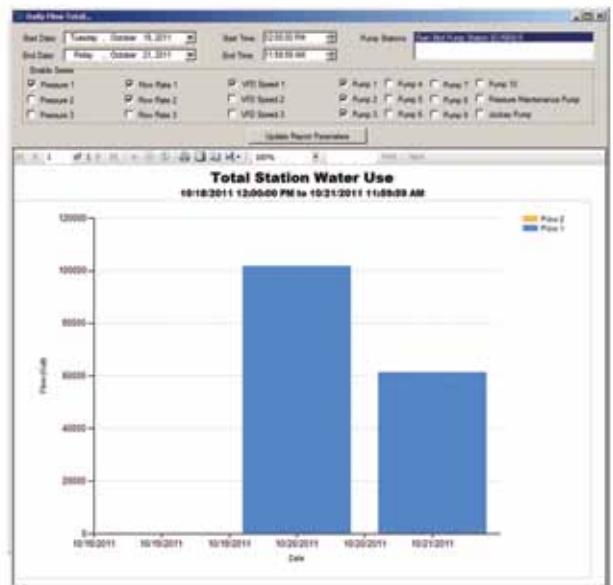
Now, keeping tabs on your pump station is as simple as clicking the Pump Manager 2 icon on your PC. Compatible with Rain Bird pump stations, Pump Manager 2 offers comprehensive monitoring and reporting features, so you can optimize performance, maximize water efficiency and minimize costs.

### System Features

- Since all pump operation data is contained on your computer, Pump Manager 2 and its built-in reporting capabilities can keep you apprised of operations, flow, water use and other key information.
- Pump Manager 2 includes common reports for future review or regulatory reporting.
- For customized reporting, data can be exported in a file compatible with common spreadsheet applications such as Microsoft® Excel®.
- Pump Manager 2 includes ten different language options.
- Pump Manager 2 can be used with any stand-alone computer or fully integrated with Rain Bird's many Central Control systems.
- Best of all, Pump Manager 2 is fully integrated with Rain Bird's exclusive central control feature, Smart Pump™.
- Pump Manager 2 can retrieve and manage data from multiple pump stations, allowing users to manage all the pump stations on their property.



- Pump Manager 2 and its report generator utility allow you to create a variety of reports. Pressure and Flow by Hour shown here.



- Use the report generator utility to meet the requirements of regulatory agencies or compare year-over-year water use. Total Station Water Use shown here.



Hong Kong | Singapore | Malaysia | Australia  
 Email: [info@centaur-asiapacific.com](mailto:info@centaur-asiapacific.com)  
 Website: [www.centaur-asiapacific.com](http://www.centaur-asiapacific.com)

